

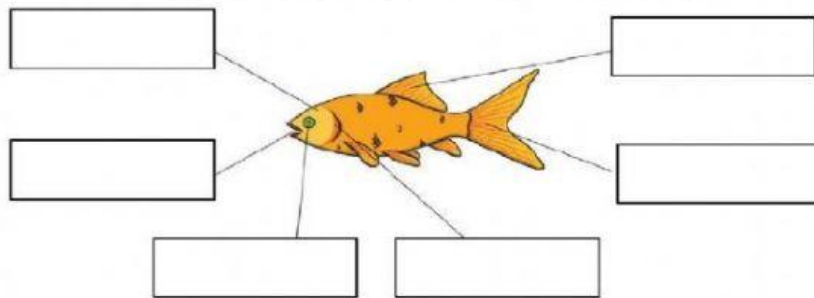
**ALPHA ELITE HIGH**  
**FOURTH STANDARD**  
**SCIENCE**

**I. Match the following.**

- |                         |  |
|-------------------------|--|
| <b>1. Live in group</b> | <b>Summer sleep</b>                    |
| <b>2. Hibernation</b>   | <b>Seasonal movement</b>               |
| <b>3. Adaptation</b>    | <b>Elephants</b>                       |
| <b>4. Aestivation</b>   | <b>Special features and behaviours</b> |
| <b>5. Migration</b>     | <b>Winter sleep</b>                    |

**II. Label the parts of a fish.**

**Parts of a fish**



Head      Tail      Fins      Mouth      Gills      Eye