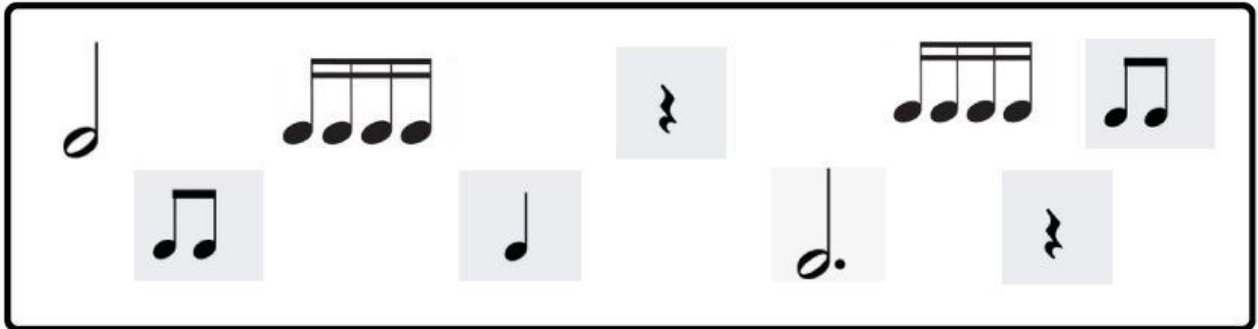


Grade:

Rhythmic Dictation

Listen, drag and drop the notes from the options given:



1. $\frac{4}{4}$
2. $\frac{4}{4}$
3. $\frac{4}{4}$

Melodic Dictation

Match the melody with the sound



Write the melodic dictation on the web page for free notation. Once you have finished, save the file as a PDF or take a screenshot and upload it to [Classroom](#). If you can not enter the Web page, write it on paper and upload it to [Classroom](#):

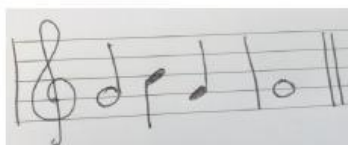
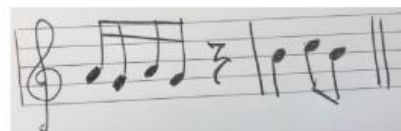
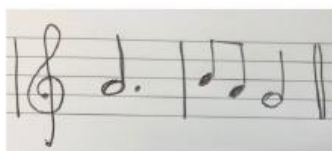
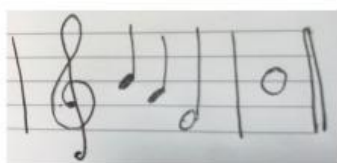
Dictation:

The web page for free notation:

[Click Here](#)

Time Signatures

Drag the musical excerpts into the column with the correct time signature



2/4 time

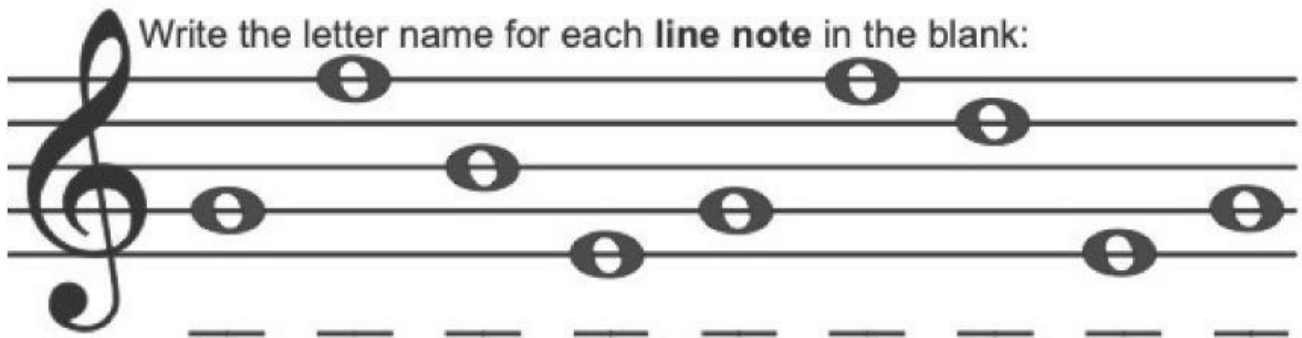
3/4 time

4/4 time

Note Names in the Staff

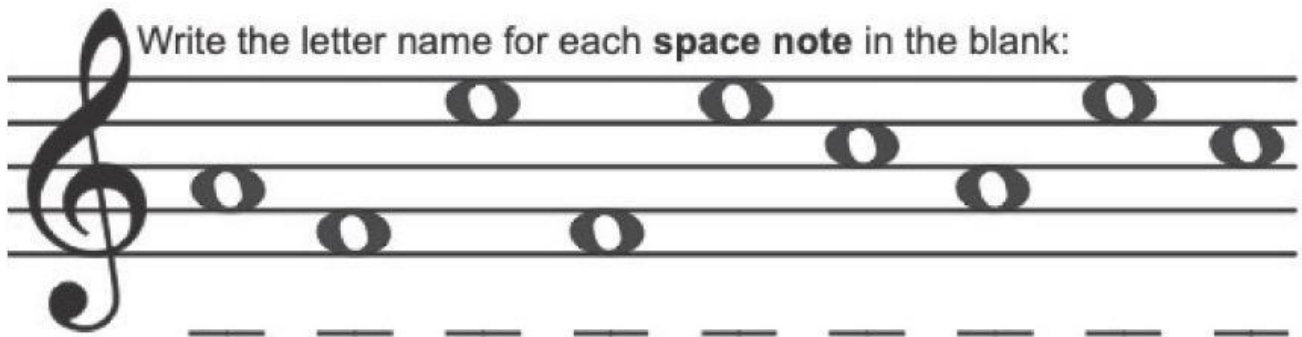
Write the correct name of each note

Write the letter name for each **line note** in the blank:



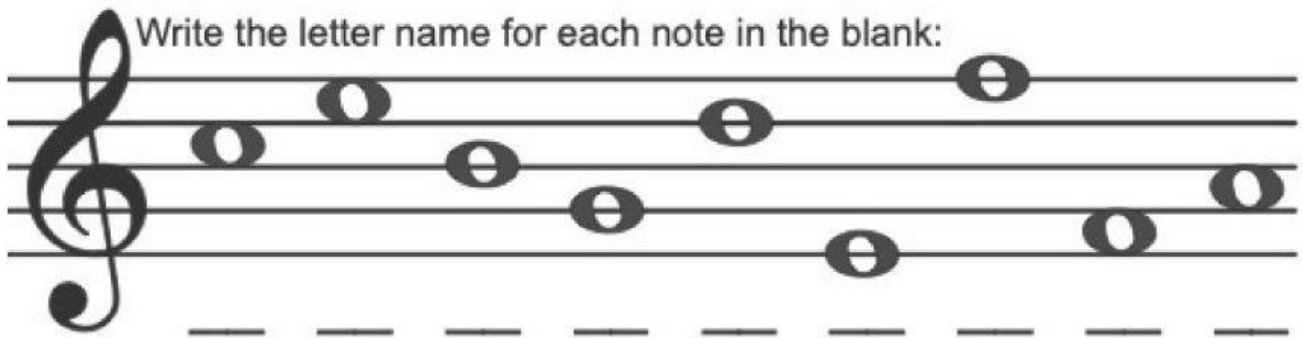
A musical staff with a treble clef. It contains eight quarter notes placed on the lines of the staff. From left to right, the notes are on the first, second, third, fourth, fifth, first, second, and third lines. Below the staff are eight dashed lines for writing the note names.

Write the letter name for each **space note** in the blank:

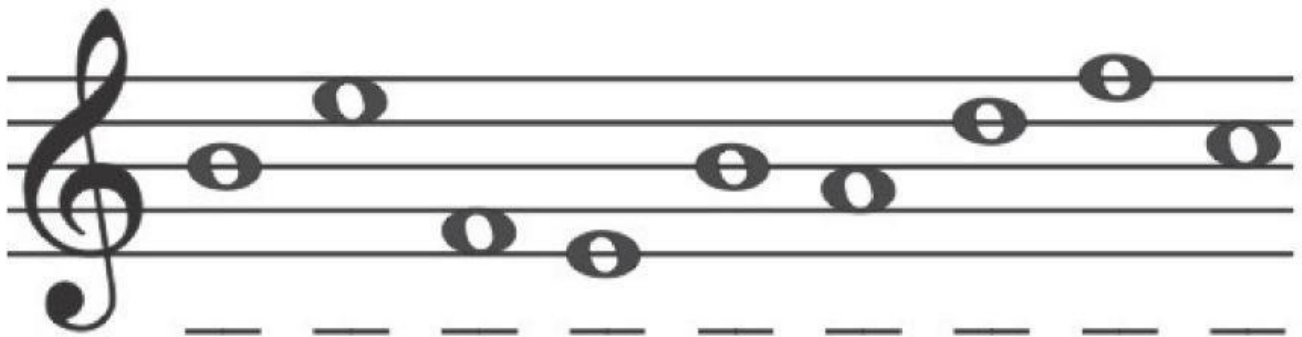


A musical staff with a treble clef. It contains eight quarter notes placed in the spaces of the staff. From left to right, the notes are in the first, second, third, fourth, fifth, first, second, and third spaces. Below the staff are eight dashed lines for writing the note names.

Write the letter name for each note in the blank:




A musical staff with a treble clef. It contains eight quarter notes, alternating between lines and spaces. From left to right, the notes are on the first line, in the first space, on the second line, in the second space, on the third line, in the third space, on the fourth line, and in the fourth space. Below the staff are eight dashed lines for writing the note names.

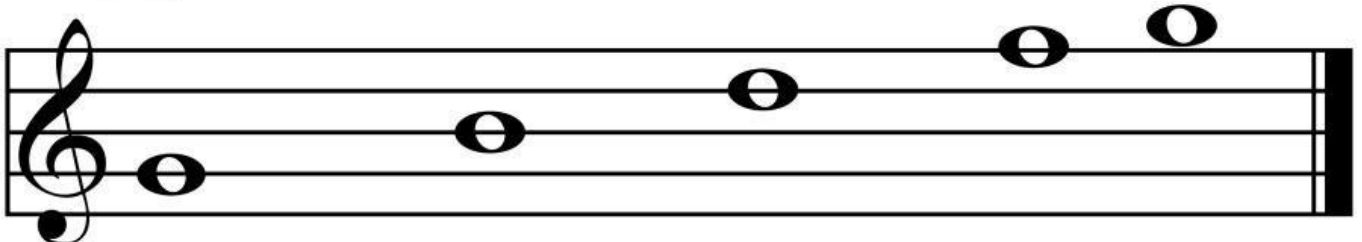


A musical staff with a treble clef. It contains eight quarter notes, alternating between lines and spaces. From left to right, the notes are on the first line, in the first space, on the second line, in the second space, on the third line, in the third space, on the fourth line, and in the fourth space. Below the staff are eight dashed lines for writing the note names.

Scales

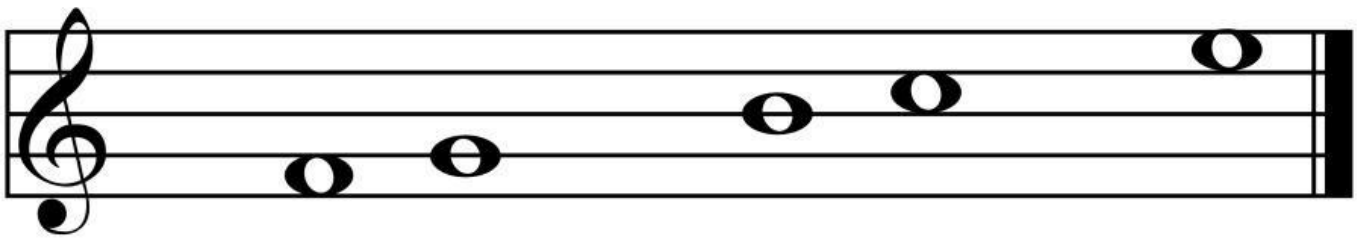
Drag the whole notes  to the staff to complete the notes missing on each scale. Write the name of each note:

G Scale:



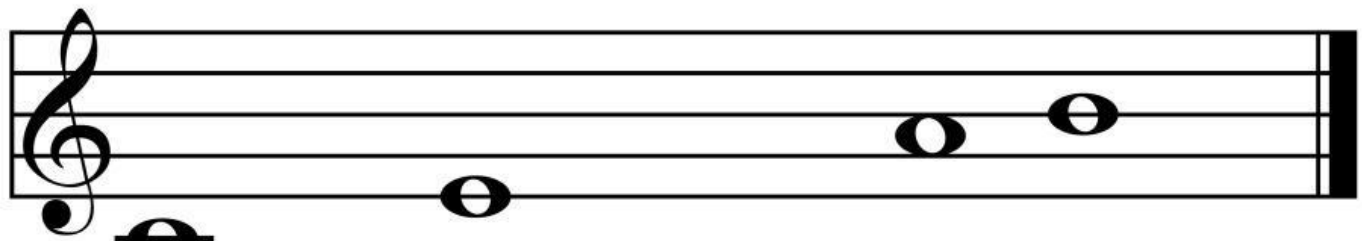
A musical staff in treble clef showing the G scale. The notes G (first line), A (first space), B (second line), and C (second space) are already placed. There are four empty spaces on the staff for the remaining notes: D (third line), E (third space), F (fourth line), and G (fourth space). Below the staff are eight dashed lines for writing the note names, and three whole notes are provided as draggable pieces.

E Scale:



A musical staff in treble clef showing the E scale. The notes E (first space), F (second line), G (second space), and A (third line) are already placed. There are four empty spaces on the staff for the remaining notes: B (third space), C (fourth line), D (fourth space), and E (fifth line). Below the staff are eight dashed lines for writing the note names, and three whole notes are provided as draggable pieces.


C Scale:



A musical staff in treble clef showing the C scale. The notes C (first line), D (first space), E (second line), and F (second space) are already placed. There are four empty spaces on the staff for the remaining notes: G (third line), A (third space), B (fourth line), and C (fourth space). Below the staff are eight dashed lines for writing the note names, and four whole notes are provided as draggable pieces.

General concepts

Matching: Draw a line from the symbol on the right to its name on the left.

<i>treble clef</i>	<i>f</i>
<i>bass clef</i>	
<i>staff</i>	
<i>barline</i>	<i>p</i>
<i>double barline</i>	
<i>repeat sign</i>	
<i>forte (loud)</i>	
<i>piano (soft)</i>	

Drag the notes to the boxes. Write the number on the line:



Draw a whole note. How many beats do whole notes get? ____

Draw a half note. How many beats do half notes get? ____

Draw a quarter note. How many beats do quarter notes get? ____

Draw a dotted half note. How many beats do dotted half notes get? ____

Intervals

What do intervals measure in music?

- ☐ The distance between notes on the staff.
- ☐ The horizontal distance between notes on sheet music.
- ☐ The distance between notes in terms of tempo and speed.
- ☐ The rhythm that defines the auditory distance between notes.

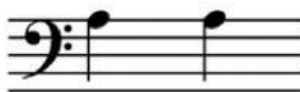
What is the smallest interval between two different pitches in Western music?

- ☐ A tritone
- ☐ A semitone
- ☐ A whole tone
- ☐ A minitone

Identify the interval between each set of notes by labeling them as **unison**, **2nd**, **3rd**, **4th**, or **5th**.



a. _____



c. _____



e. _____



b. _____



d. _____



f. _____