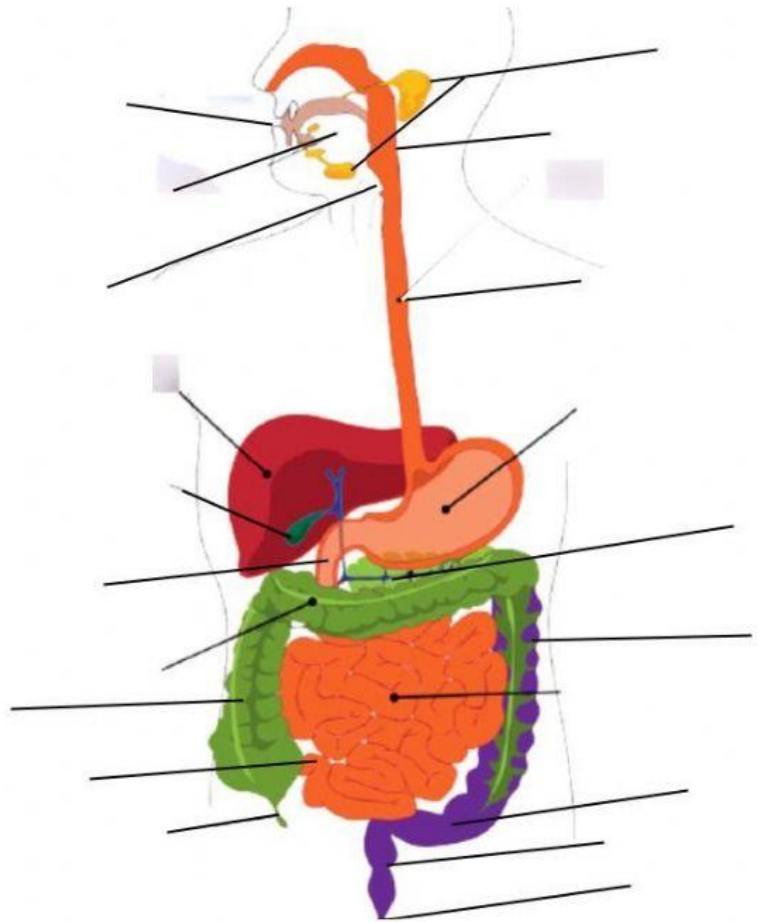


# DIGEST THIS- DIGITAL WS

1. **DRAG & DROP** the organs of the digestive system.

Stomach
Liver
Pharynx
Pancreas
Salivary glands
Anus
Gallbladder
Tongue
Mouth/Oral Cavity
Transverse Colon
Sigmoid Colon
Esophagus
Appendix
Rectum
Ileum
Duodenum
Ascending Colon
Descending Colon
Epiglottis
Jejunum



2. Which of the following organs are **ACCESSORY ORGANS** for the digestive system?

Pancreas	Oral Cavity	Stomach	Salivary glands
Liver	Rectum	Esophagus	Small intestine
Teeth/Tongue	Gallbladder	Large Intestine/colon	Appendix

**FILL IN THE BLANKS:**

3. The process of breaking down food into smaller particles is called \_\_\_\_\_.
4. The process of taking IN food is called \_\_\_\_\_.
5. Both chemical AND mechanical digestion begin in the \_\_\_\_\_ where your \_\_\_\_\_ glands secrete \_\_\_\_\_ to help break down carbohydrates.
6. When chewed food is combined with saliva it becomes a \_\_\_\_\_.
7. After swallowing, your body performs an involuntary movement called \_\_\_\_\_ which forces the food through the esophagus down the alimentary canal.
8. When the stomach's strong gastric juices combine with the bolus it forms a substance called \_\_\_\_\_.
9. The region of the alimentary canal where MOST of digestion occurs is called the \_\_\_\_\_.
10. The process by which the body takes up nutrients from chyme is called \_\_\_\_\_.

**DRAW TO MATCH:** Connect the digestive organ with its function.

Pharynx
Epiglottis
Duodenum, Jejunum, ileum
Rectum
Large Intestine/colon
Esophagus
Stomach
Liver
Salivary glands
Gallbladder
Anus
Tongue
Pancreas

Keeps food/water from getting into your windpipe
Moistens food & begins carbohydrate break down
Passes bolus from throat to stomach
The final stop, controls waste expulsion
Holds/stores waste for elimination
Common passage "tube" for air, water, & food
Stores Bile for fatty food binges
Shoves food into throat
Absorbs water, minerals, vitamins
Many functions, Makes bile for fat digestion
Absorbs food nutrients (carbs, lipids, proteins)
Makes bicarbonate to neutralize stomach acid, also insulin
Churns bolus in gastric juice, makes chyme

