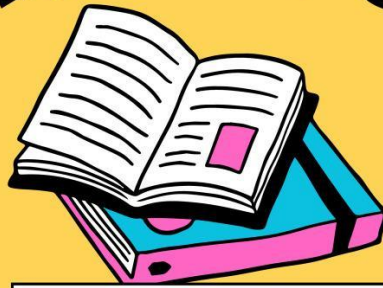


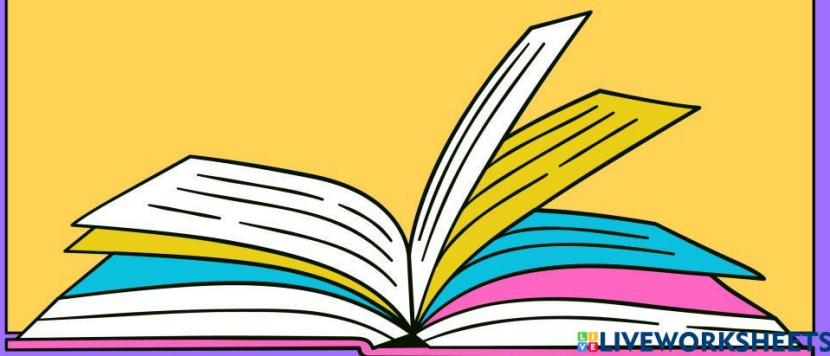
# analysing text



## text

Tsunami occurs when major fault under the ocean floor suddenly slips. The displaced rock pushes water above it like a giant paddle, producing powerful water waves at the ocean surface. The ocean waves spread out from the vicinity of the earthquake source and move across the ocean until they reach the coastline, where their height increases as they reach the continental shelf, the part of the earth crust that slopes, or rises, from the ocean floor up to the land.

A tsunami washes ashore with often disastrous effects such as severe flooding, loss of lives due to drowning and damage to property. A tsunami is a very large sea wave that is generated by a disturbance along the ocean floor. This disturbance can be an earthquake, a landslide, or a volcanic eruption. A tsunami is undetectable far out in the ocean, but once it reaches shallow water, this fast traveling wave grows very large.



# analysing text

Name:

Class::



Main Idea

What is the main Idea of the Text

Social  
Function

What is the social function of the text?

Thesis

What is the thesis of the text?

Arguments

What is the arguments of the text?

Reiteration

What is the reiteration of the text?

Language  
feature

What is the language feature of the text?

