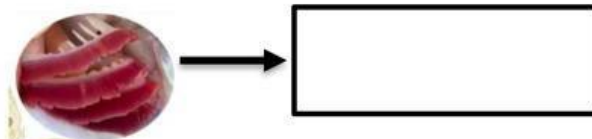
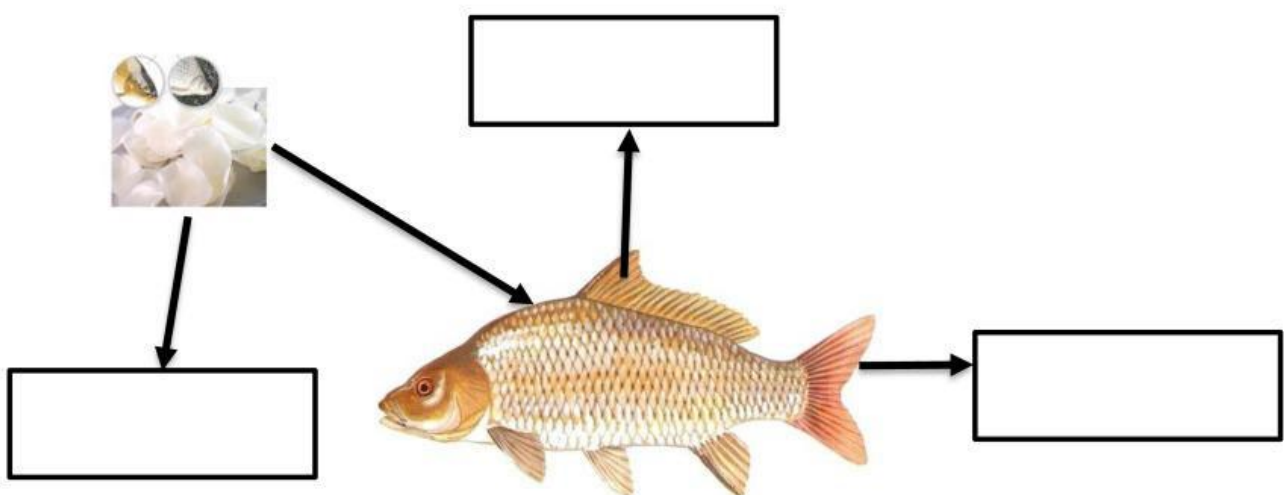
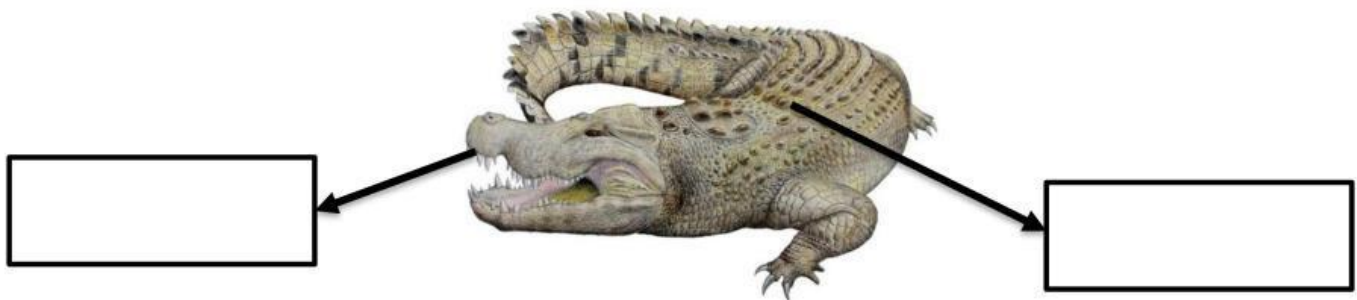
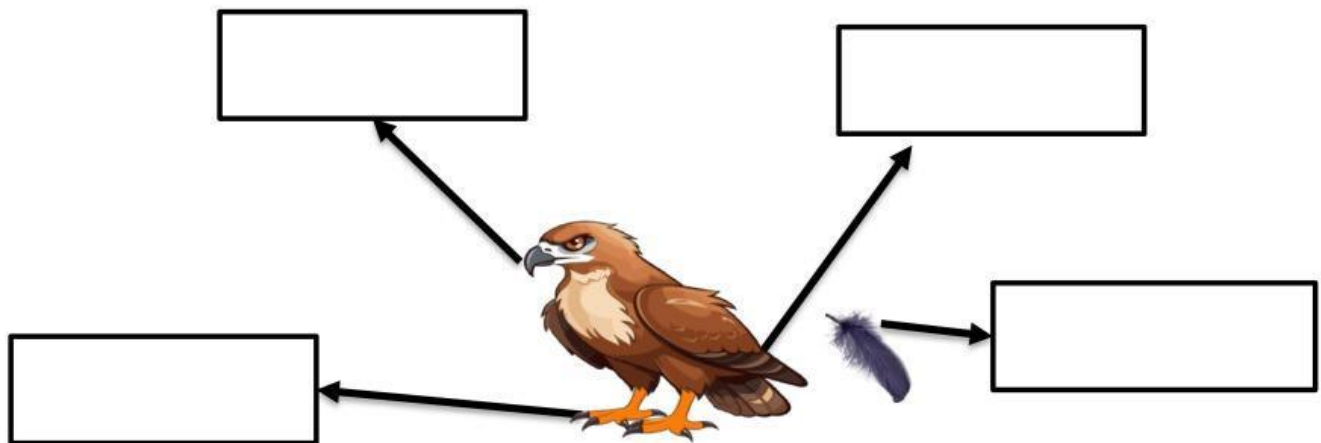


CLASS: PO2

NAME:

WORKSHEET REVIEW UNIT 5

Look and write



Look and write.



=>



=>



=>



=>



=>



=>



=>



=>

MODAL VERBS: MAKING DEDUCTIONS

by Julian Conde

I. Choose the best modal.

1. She be at home; the lights are on. (**must / can't**)
2. He be a doctor; he's wearing a nurse's uniform. (**must / can't**)
3. The temperature is high; you have a fever. (**could / can't**)
4. The bus is late; there be traffic. (**could / can't**)
5. They have a big house; they be wealthy. (**must / can't**)
6. The restaurant be open; the door is locked. (**can't/must**)
7. She be angry; she's smiling. (**might/can't**)
8. I'm not sure, but it rain today. (**can't/might**)
9. He be a teacher; he's too young. (**can't/might**)
10. They be twins; they look so much alike. (**could/can't**)

II. Rewrite the sentences, so it includes the modal.

- I'm sure they're lost. (must)

- I don't think she's at work today. (can't)

- It's possible that he's busy. (might)

- It's possible that she knows the answer. (could)

- It's clear that he's lying. (must)

- I'm sure she's happy. (must)

- I don't think he's telling the truth. (can't)

- Perhaps they're celebrating a birthday. (might)



VERBS OF THE SENSES

1. Complete the following sentences with:

smell(s)/taste(s)/look(s)/feel(s)/sound(s) + like

That perfume _____ wet grass!

Those boys singing _____ angels.

This ice cream _____ coconut sweets.

My new sweater _____ a teddy bear.

These flowers _____ roses.

Your socks _____ old cheese.

That noise _____ an ambulance.

My mum's towel _____ cotton.

That cloud _____ a heart.

Beans _____ kidneys.