



Name: _____

Year 4: _____

Maths quiz 2: Foundation

Question 1: Measurement -Time

a. Look at the following sequence of time and **choose the longest time** in each row. (2 Marks)

1.

30 minutes

1 hour

50 minutes

2.

5 hours

10 minutes

9 hours

b. Look at the following sequence of time and **choose the shortest time** in each row. (2 Marks)

1.

15 minutes

45 minutes

1 hour

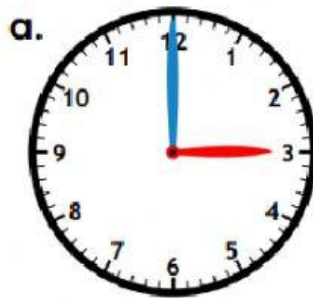
2.

1 hour

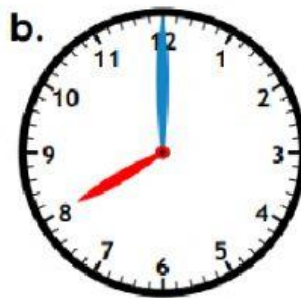
11 hours

5 minutes

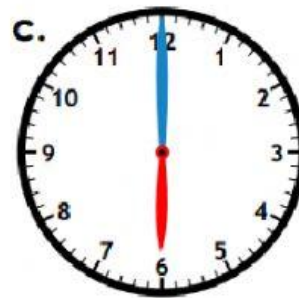
c. Tell the time on the following clock's by **choosing the correct time** from the given options. (To the hour) (3 marks)



- | |
|----------------|
| Three o'clock |
| Twelve o'clock |

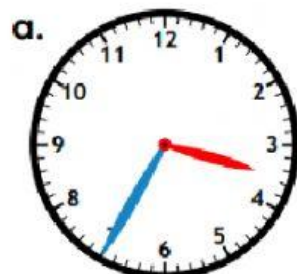


- | |
|---------------|
| Seven o'clock |
| Eight o'clock |

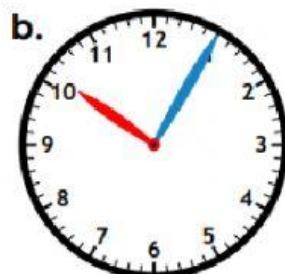


- | |
|----------------|
| Six o'clock |
| Twelve o'clock |

d. Tell the time on the following clock's by **choosing the correct time** from the given options. (to five minutes, including quarter past/to the hour.) (3 Marks)



- | |
|------------------------------|
| Twenty-five minutes to four. |
| Four o'clock. |



- | |
|------------------------|
| Ten o'clock. |
| Five minutes past ten. |



- | |
|--------------------------|
| Quarter past one. |
| Five minutes past three. |

e. Choose the correct answer for each statement by dragging and dropping the correct answer to complete the sentence. (2 Marks)

1. There are _____ hour in a day.

12

24

2. There are _____ minutes in an hour.

30

60

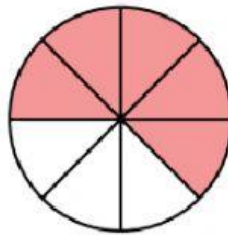
Question 2: Number-Fractions

a. Tell what fraction of the shape is shaded. (3 Marks)

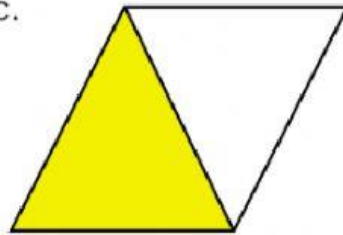
a.



b.

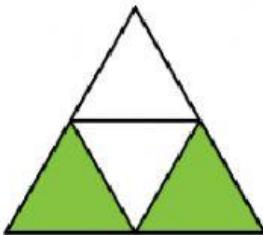


c.

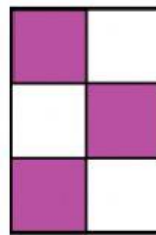


b. Tell what fraction of the shape is shaded. (3 Marks)

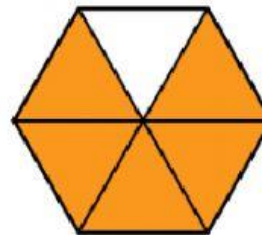
d.



e.



f.



c. Challenge questions: (2 Marks)

$$\frac{1}{2} \text{ of } 6 = \underline{\hspace{2cm}}$$

$$\frac{1}{2} \text{ of } 8 = \underline{\hspace{2cm}}$$