

## How Do Plants Survive?



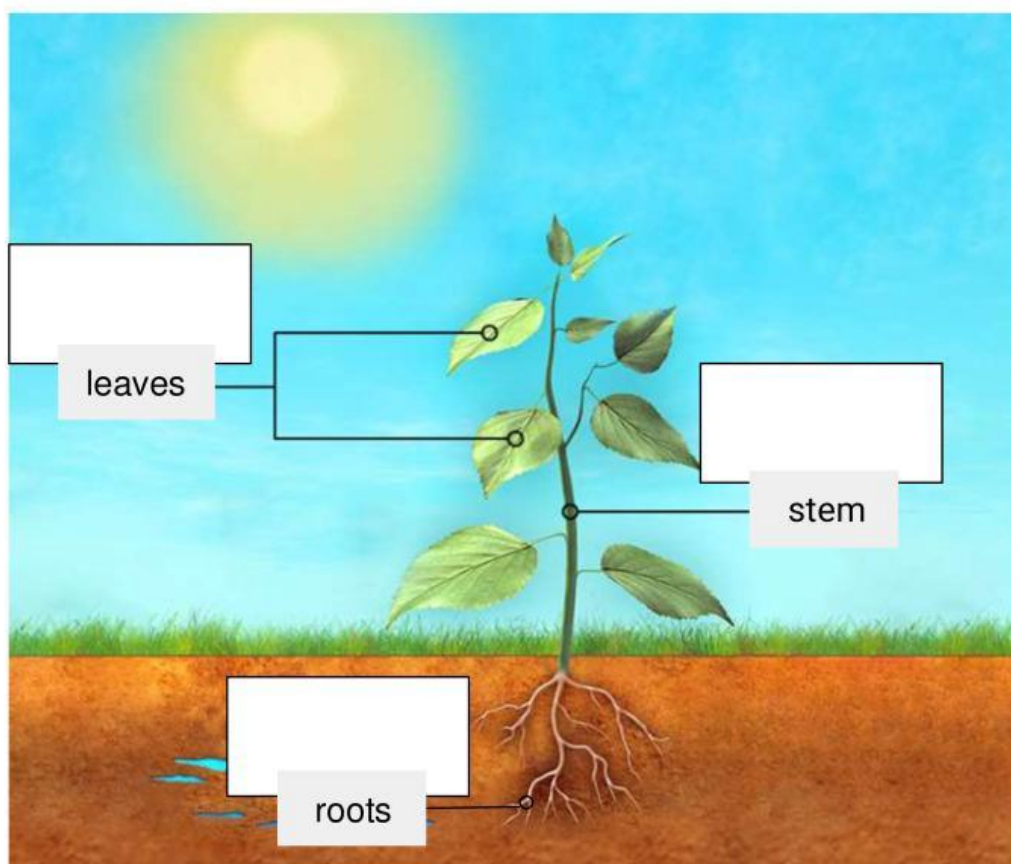
Name: \_\_\_\_\_

Date: \_\_\_\_\_

Class: \_\_\_\_\_

1. Fill in the blanks on the image to describe the role of each plant part. Write the descriptions in the spaces.

Word Bank		
take in energy from the Sun and gases from the air	move water, food, and nutrients	take in water and nutrients



2. Drag the materials plants need and the materials they make into the correct column in the table.

Materials Plants Need		Materials Plants Make
	<b>sunlight</b> 	

water

carbon dioxide

oxygen

sugar

3. Select the correct answer.

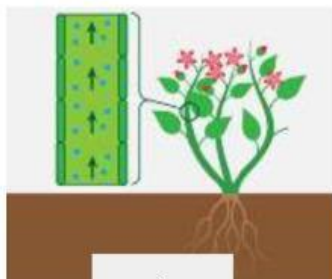
1. Which plant tissue moves water from the roots to all plant parts?

- |            |          |
|------------|----------|
| a. phloem  | b. xylem |
| c. stomata | d. leaf  |

2. What is meant by the term transpiration?

- |                               |                                     |
|-------------------------------|-------------------------------------|
| a. water loss from the roots  | b. water absorption from the roots  |
| c. water loss from the leaves | d. water absorption from the leaves |

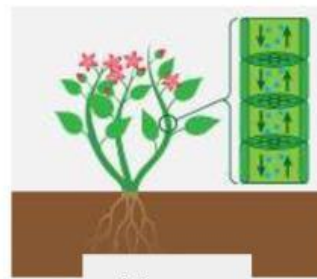
4. Drag the labeled images to the table to match them to their descriptions.



xylem



stomata



phloem

open to allow carbon dioxide in and to allow oxygen and water to move out	move water and nutrients taken in by the roots up through the stem to other plant parts	move sugars made in plant leaves up and down the plant to all of its different parts