

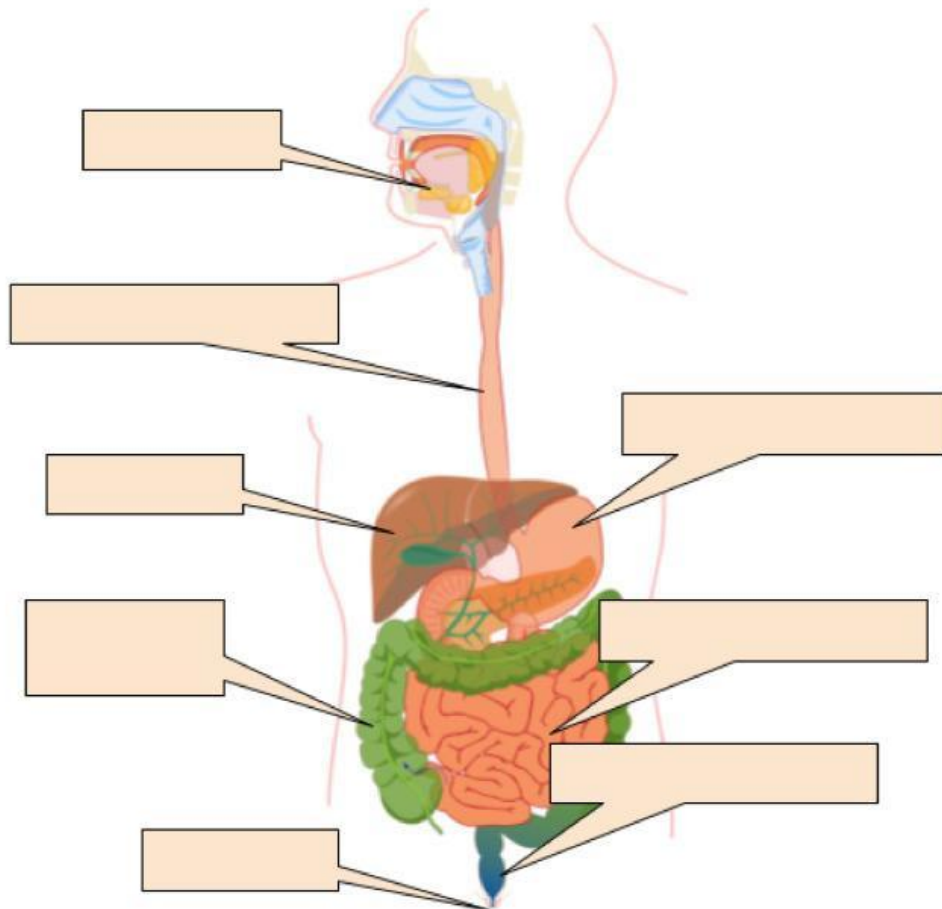
Grade 5 EVS EOY Practice test

Q.1. Click on drop down button and select whether the following statements are true or false:

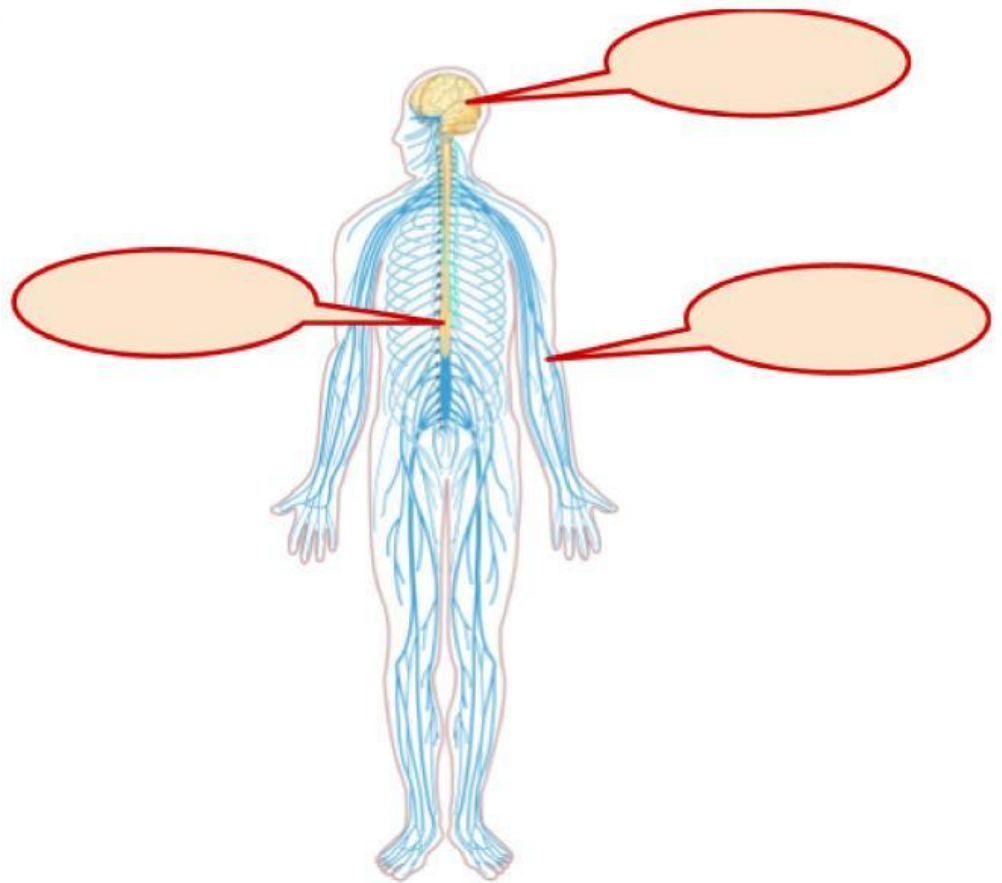
1. Intestinal diseases spread through air.
2. We cannot live a wholesome life if we take care of our health.
3. Some diseases are caused by the anger of God.
4. National parks are reserved for the conservation of biodiversity of the park.
5. Right lung is smaller than the left lung.
6. Malaria is caused by the rats.

Q.2. Label the following diagrams:

a)



b) Nervous system:



Q.3. Classify the following into the diseases which spread through air, water and food.

Gastro	Cholera	Diarrhoea
Tuberculosis	Cold and cough	Typhoid

Spread through AIR	Spread through WATER	Spread through FOOD