

PRE-LISTENING

Có một số từ mới xuất hiện trong file nghe dưới đây. Hãy đoán nghĩa từ mới bằng cách nối nghĩa với từ vựng thích hợp

Sort elements

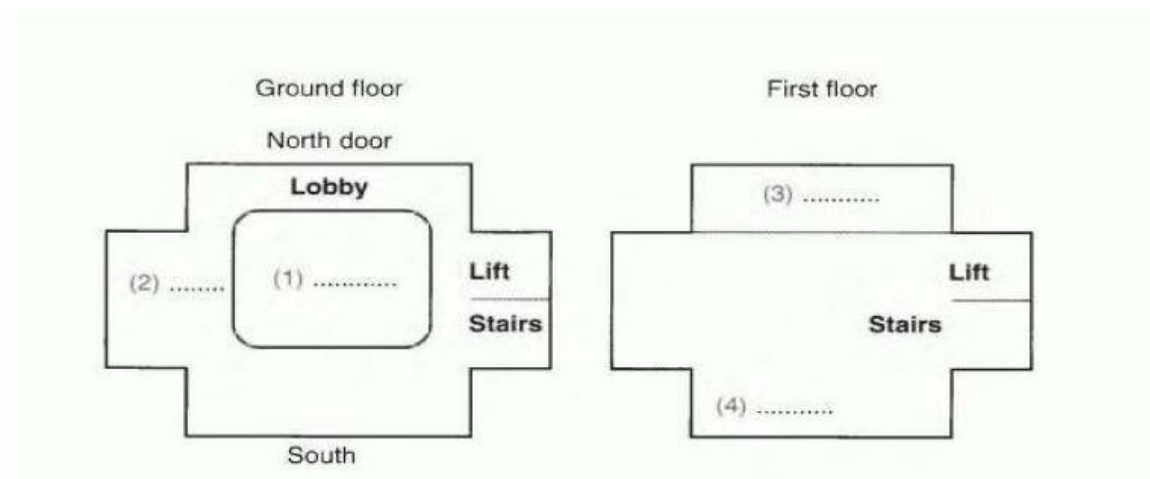
- an accepted way of behaving or of doing things in a society or a community
- to make something known formally
- a large area inside the entrance of a public building where people can meet and wait
- (of people) enjoying spending time with other people
- a shelf that you keep books on

custom (noun):	
issue (verb):	
sociable (adj):	
bookshelf (noun):	

DURING LISTENING

Bạn sẽ nghe Lily giải thích với Chen về cách sử dụng thư viện. Hoàn thành sơ đồ sau:

--



Sort elements

A. PC Zone

B. Library Café

C. Cookbooks

D. Travel

E. Silent zone

Question 1	
Question 2	
Question 3	
Question 4	

VOCABULARY PRACTICE

Nghe lại lần hai và hoàn thành các vị trí trống dưới đây

Chen: Excuse me, Lily. Could you help me? You know we've got an **1** to write about eating **2** across the world?

Lily: Yeah. We have to **3** some books, don't we?

Chen: Yes, but I'm **4** the library **5**. Do you think you could show me how to find the books and how to **6** them out?

Lily: Sure, no **7**. Shall I tell you about the different **8** of the library, first?

Chen: Oh yes ...Thank you very much.

Lily: OK, then, let's look at the plan of the library. Here, you can see the main door on the north-side that **9** into the **10**. In the middle of the building, there 's a big open PC **11**. The lift and **12** are on the left as you go in, and on the other side of the building there's the library cafe. That part of the library is pretty **13** ... It's a good place to **14** with friends.

Chen: I really **15** to study alone. Is there anywhere in the library I can go?

Lily: Oh, if you like studying in a quiet place, it's better to go up stairs, to the **16** zone. As you come out of the **17**, or up the stairs, you'll see a section on your right, facing north, which is **18** off. That's the silent zone. On the other side, facing south, are the **19** with all the **20** ... [fade]