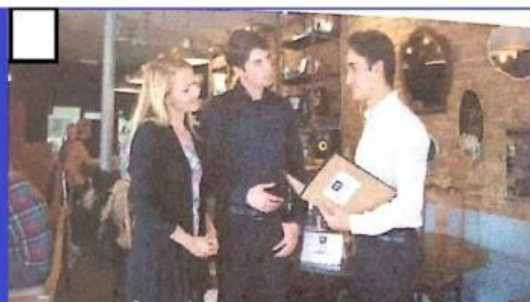


# Discussing favourite foods and restaurants

## Worksheet 1 Practice

1. Look at each image and place the corresponding letter (a-d) according to the action that the people in a restaurant represent.

1. asking for the check? \_\_\_\_\_
2. Arriving at a restaurant? \_\_\_\_\_
3. reserve a table \_\_\_\_\_
4. order food? \_\_\_\_\_

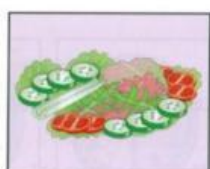


2. Listen carefully to the audio where Tony's mother talks to her friends about food. Then, she writes a letter in each box to indicate each person's favorite food...

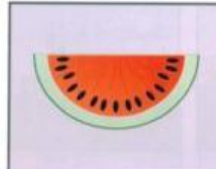
3.



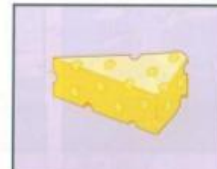
A



B



E



F



C



D



G



H



Bill

D



Alex



Ben



Katy



Robert



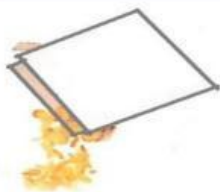
Mary

3. Match the phrases in the box with the appropriate vocabulary according to their images.

a bag of  
a bar of  
a bottle of  
a slice of

a box of  
a can of  
a cup of  
a jar of

a glass of  
a piece of  
a plate of  
a bowl of



CEREAL



CHEESE



PASTA



OLIVE OIL



CARROTS



CHOCOLATE



WATER



COLA

# FOOD

## Worksheet 2 Production

### 1. Complete the sentences with the correct words.

- There are two \_\_\_\_\_ of lemonade in the fridge
- we need a big \_\_\_\_\_ apple juice
- I have \_\_\_\_\_ of cereal in the cabinet, but I don't want it.
- we love olives, so we always have a few \_\_\_\_\_ in the cabinet.
- it's very hot. I need a \_\_\_\_\_ of water
- if I want a snack, I buy a \_\_\_\_\_ of chocolate
- there's a \_\_\_\_\_ of strawberry jam, if you want some on your toast
- I sometimes buy a \_\_\_\_\_ of potato chips for my daughter.



# Assessment (post):

## Worksheet 3 Assessment



1. Listen to a couple ordering food at a restaurant and answer the questions.

1. The woman orders Soup of the Day for her starter.

- a). True
- b). False

2. The woman orders chicken and rice for her main course.

- a). True
- b). False

3. The man orders a burger with bacon and cheese.

- a). True
- b). False

4. The woman orders wine and the man orders beer.

- a). True
- b). False

5. The man chooses apple pie and cream for dessert.

- a). True
- b). False

6. The woman chooses white chocolate cake for dessert.

- a). True
- b). False