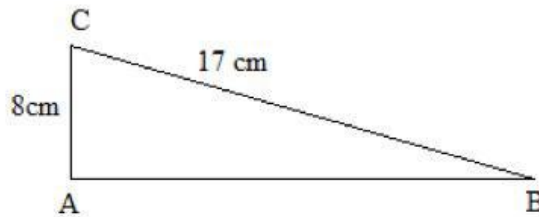


Strand Test (Geometry)

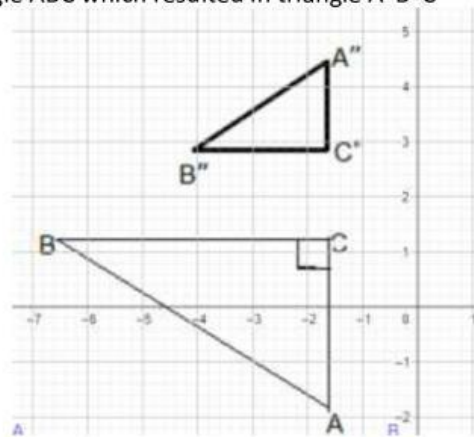
1. Triangle ABC below is dilated with scale factor 3. What will be its area after dilation?

- A. 60 cm^2
- B. 180 cm^2
- C. 540 cm^2
- D. 1080 cm^2



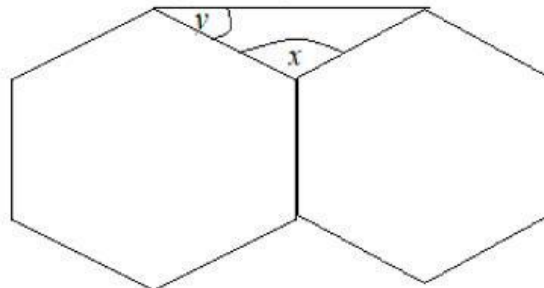
2. A combined transformation was performed to triangle ABC which resulted in triangle A''B''C''. Which sequence of transformation was applied ?

- A. Reflection along BC and translation by 2 units
- B. Dilatation using centre A with scale factor $\frac{1}{2}$ and reflection along BC
- C. Reflection along BC and dilatation by scale factor $\frac{1}{2}$
- D. Rotation from turn centre C by 45° and dilatation using centre A with scale factor $\frac{1}{2}$



3. Two regular hexagons are joined as below. The measure of angle x and y in the triangle will be

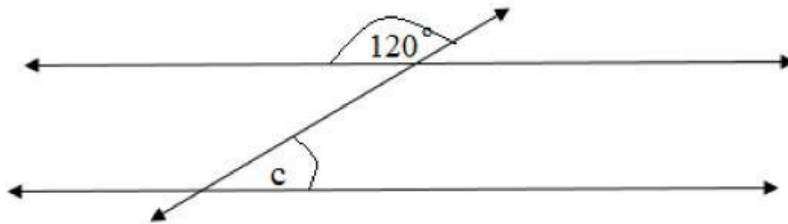
- A. 132° and 48°
- B. 132° and 24°
- C. 48° and 24°
- D. 48° each



4. Set below shows length of sticks. Which set is possible for triangle construction?

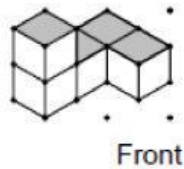
- A. 2 cm, 3 cm and 5 cm
- B. 2 cm, 2 cm and 4 cm
- C. 2 cm, 4 cm and 7 cm
- D. 2 cm, 3 cm and 4 cm

5. A pair of parallel line below is cut by a transversal.



The measure of angle c is

- A. 120°
 - B. 80°
 - C. 60°
 - D. 180°
6. Isometric drawing of a structure is given below



Which figure below is orthographic views of top face of above isometric drawing?

- A.
- B.
- C.
- D.