

7.2 – Respiratory System

1. Which of the following is the correct order of steps of the process of exhaling?

- I. Air pressure increases in the lungs
- II. The diaphragm relaxes
- III. The lungs get smaller
- IV. Waste gases move out the lungs

- A. I, II, III, IV
- B. II, III, I, IV
- C. III, IV, II, I
- D. IV, I, II, III

2. Which of the following is surrounded by capillaries for gas exchange?

- A. Alveoli
- B. Bronchi
- C. Diaphragm
- D. Trachea

3. Which of the following is true about inhalation? Select all that applies.

- A. The diaphragm moves up
- B. The diaphragm contracts
- C. The chest cavity expands
- D. It is the act of releasing air from the body

4. Which of the following is true about exhalation? Select all that applies.

- A. The diaphragm moves up
- B. The chest cavity reduces its size
- C. The lungs get filled with air
- D. It is the act of taking air into the lungs

5. Which of the following is a function of the respiratory system? Select all that applies.

- A. Digestion of food.
- B. Releases carbon dioxide and water
- C. Allows oxygen gas to enter the body.
- D. Defends the body against harmful substances.

6. Which of the following disorders occurs when respiratory pathways become irritated and bronchioles contract?

- A. Asthma
- B. Bronchitis
- C. Lung cancer
- D. Pulmonary tuberculosis

7. Which of the following disorders occurs when infection of the lungs causes the alveoli to collect mucous material?

- A. Asthma
- B. Bronchitis
- C. Pneumonia
- D. Emphysema

8. Which of the following disorders occurs when uncontrolled cell growth in lung tissue and can eventually lead to death?

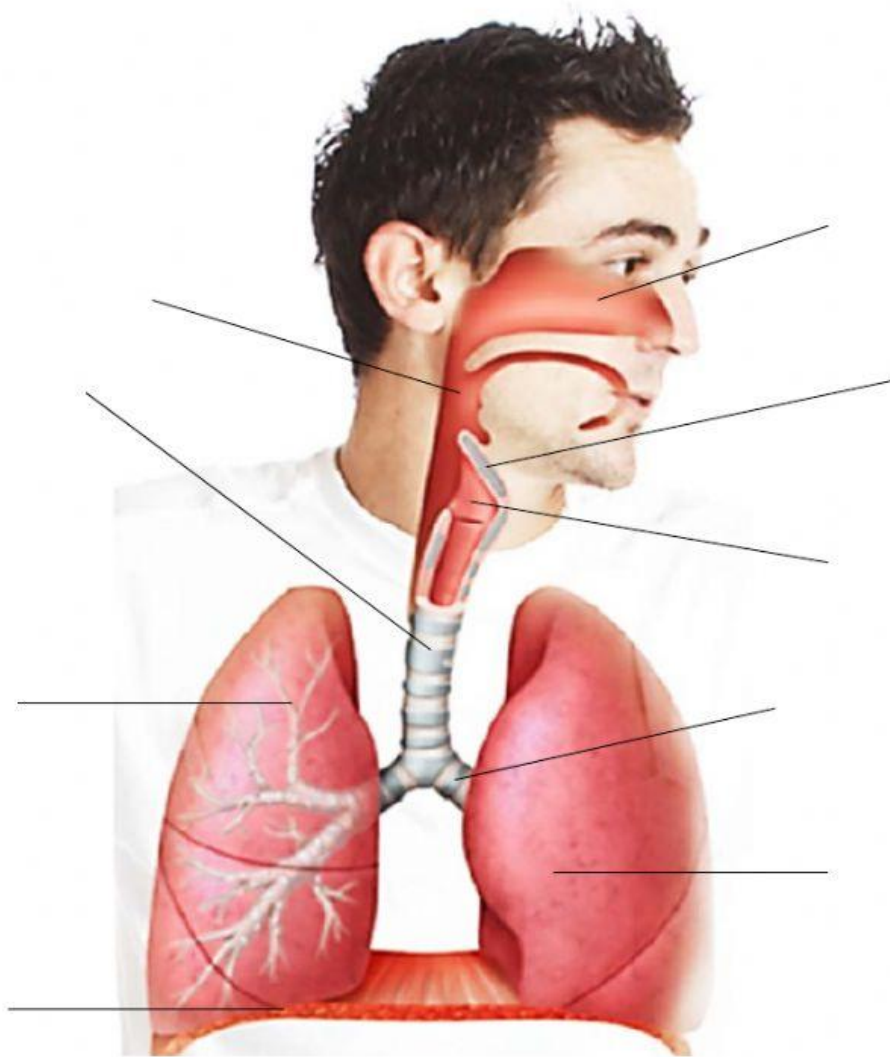
- A. Pneumonia
- B. Emphysema
- C. Lung cancer
- D. Pulmonary tuberculosis

9. Choose from the list below the correct term that matches the description in the table.

Lung	Asthma	Larynx	Diaphragm	Trachea	Emphysema
------	--------	--------	-----------	---------	-----------

Description	Term
Coughing, tiredness, loss of appetite, and weight loss resulting from destruction of alveoli in the lung and caused by smoking	
The main part of the respiratory system where gas exchange occurs with blood	
The part of the respiratory system that contains the vocal cords and creates the human voice	
The part of the respiratory system where air moves toward the bronchi	
Trouble breathing as a result of swollen air-ways and increased mucus caused by dust, smoke, pollen, and pollution	

10. Complete the following table.



Nasal cavity	Trachea
Pharynx	Diaphragm
Bronchus	Lungs
Larynx	Bronchiole
Epiglottis	