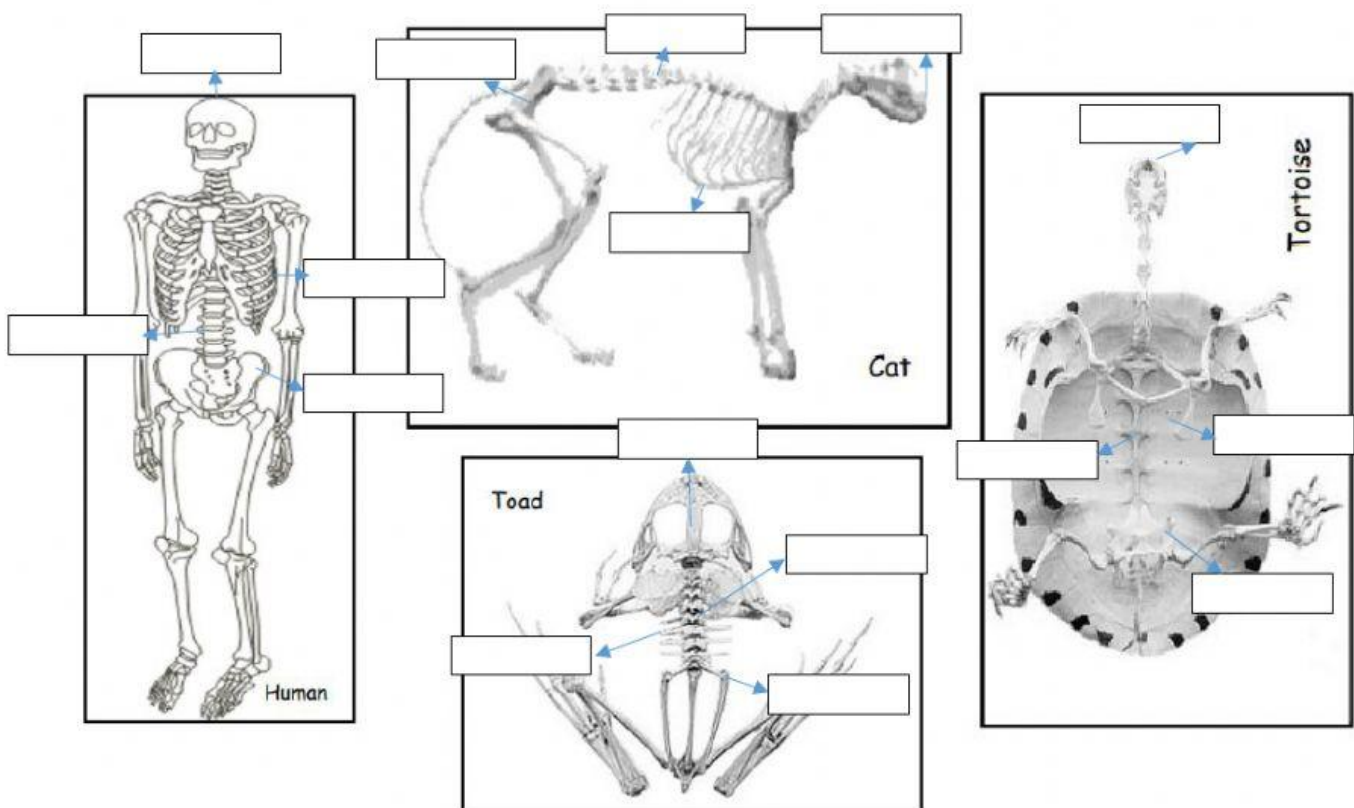


1. Below are the skeleton of a human, a cat, a toad and a tortoise. Drag and drop the following bones on each of the skeleton

Spine	Skull	Pelvis	Ribs
Spine	Skull	Pelvis	Ribs
Spine	Skull	Pelvis	Ribs
Spine	Skull	Pelvis	Ribs



2. All of the skeletons have ribs, but in which skeleton are the ribs difficult to see?

3. Match

Shape is
different

Size is different

All vertebrates
have ribs

All vertebrates
have skull

Differences
between the
skeleton

Thing that all of
the skeletons
have in common