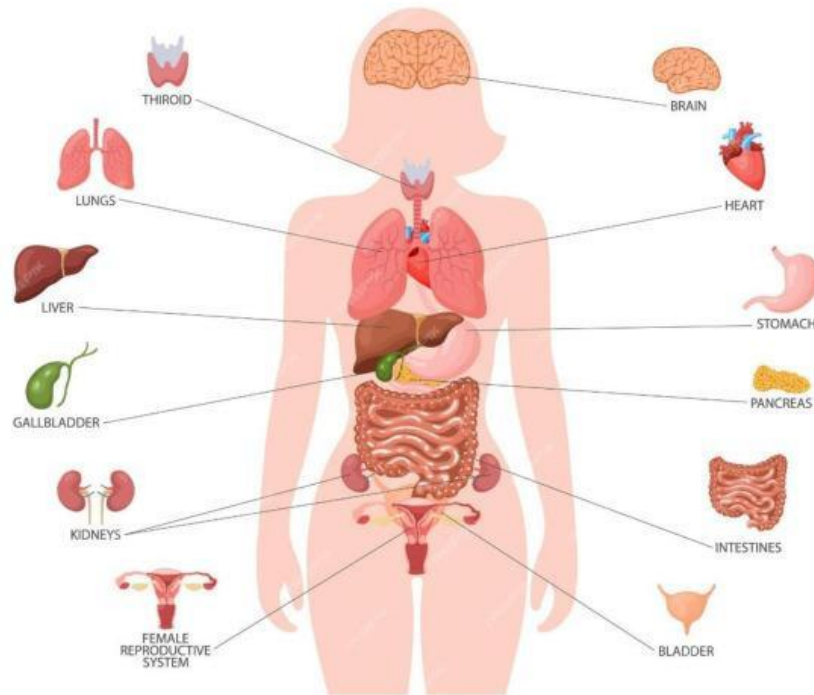


FALL TERM 2023

HEALTH SCIENCE VIRTUAL ASSESSMENT



SHOW WHAT YOU KNOW!!!

Instructions to Students:

1. Read each question carefully.
2. Answer ALL questions
3. Follow ALL instructions.

TIME ALOTTED: 35 Minutes

DO YOUR BEST 😊

Section A- Multiple Choice – Choose the best possible answer.

1. Which disease cannot be passed on from one person to another?

- A. Chicken pox
- B. Cold
- C. Conjunctivitis
- D. Hypertension

2. Organisms that cause diseases are called _____.

- A. Fungi
- B. Pathogens
- C. Virus
- D. Worms

3. Which disease is an acute disease?

- A. AIDS
- B. Cancer
- C. Conjunctivitis
- D. Diabetes

4. Which of the following is not a chronic disease?

- A. Cancer
- B. Diarrhea
- C. HIV
- D. Kidney disease

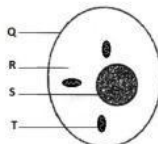
5. How often should you brush and floss teeth?

- A. 1-2 times per day
- B. Every other day
- C. Once a week
- D. Once a year

6. A doctor who cares for teeth is called a

- A. Dentist
- B. Nurse
- C. Pediatrician
- D. Surgeon

Use the diagram to answer questions 7 to 11.



7. Which organelle produces energy?

- A. Q
- B. R
- C. S
- D. T

8. Which organelle controls what enters and leaves the cell?

- A. Q
- B. R
- C. S
- D. T

9. Which part of the cell has DNA?

- A. Q
- B. R
- C. S
- D. T

10. Which structure is jelly-like?

- A. Q
- B. R
- C. S
- D. T

11. Which is the name of organelle T?

- A. Cell membrane
- B. Cell wall
- C. Mitochondrion
- D. Nucleus

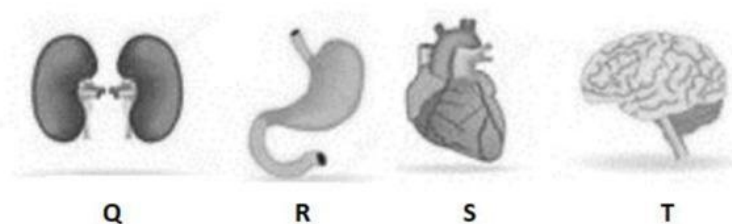
12. To stop body odor a person should

- A. Apply deodorant to clean armpits after your bath or shower
- B. Apply makeup after a shower
- C. Brush teeth
- D. Put on clean clothes

13. Which term best defines the word organ?

- A. A group of specialized cells carrying out similar functions.
- B. A group of different tissues working together to carry out a specific function/s.
- C. The basic unit of life.
- D. None of the above.

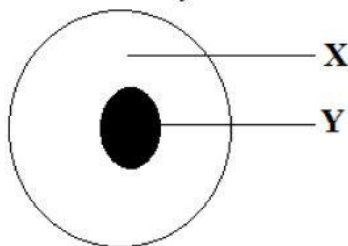
Use the diagrams below to answer questions 14 and 15.



14. Which organ below belongs to the digestive system?
- A. Q
 - B. R
 - C. S
 - D. T
15. What is an organism?
- A single cell
 - B. A group of cells
 - C An individual living thing
 - D. A collection of tissues
16. Which body system is responsible for supporting the body, protecting organs, and allowing movement?
- A. Respiratory system
 - B. Nervous system
 - C. Skeletal system
 - D. Immune system
17. Which body system is responsible for protecting the body from pathogens and diseases?
- A. Immune system
 - B. Digestive system
 - C. Skeletal system
 - D. Endocrine system
18. What is the function of the skeletal system?
- A. To control and coordinate body functions
 - B. To provide structure and support for the body
 - C. To transport oxygen to cells and remove carbon dioxide
 - D. To break down food and absorb nutrients
19. How do different organ systems work together to keep us healthy?
- A. By working alone and not affecting each other.
 - B. By competing with each other for resources.
 - C. By coordinating their activities to keep us alive.
 - D. By only focusing on their individual functions.
20. Which of the following is an example of a hinge joint?
- A. Shoulder joint
 - B. Hip joint
 - C. Elbow joint
 - D. Wrist joint

SECTION B- Structured Questions – Answer ALL Questions

1. The diagram shows the structure of a human body cell.



a. Name the parts labelled X and Y on the diagram.

X _____

Y _____

[2]

b. Which structure labelled on the diagram contains chromosomes and genes?

_____ [1]

c. Human body cells are made up of protoplasm. What is protoplasm?

_____ [1]

d. Explain the function of these specialized cells in the body.

i. Muscle cells _____

ii. Neurone _____ [2]

e. Name the TWO cells which form a zygote after fertilization.

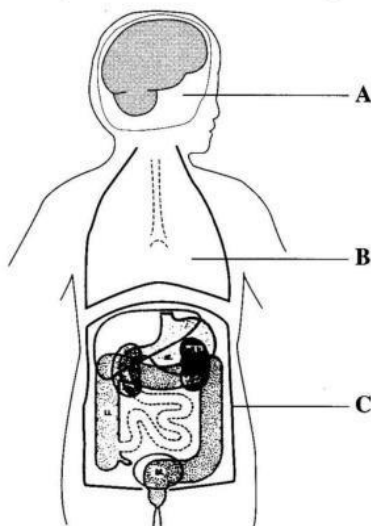
_____ [1]

f. Complete the chart to show the correct order in which human body is organized.

Cells → _____ → Organs → _____ → Organisms [2]

TOTAL MARKS 10]

2. The diagram shows the human body cavities and the main organs present in them.



a. Name the body cavities represented by the letters A and B on the diagram.

i. Cavity A _____

ii. Cavity B _____ [2]

b. Name one organ protected by each of the following bones.

Cranium _____

Ribs _____ [2]

c. (i) Name the muscle which separates cavity B from cavity C.

_____ [1]

(ii) How does the upward movement of the muscle named in (i) affects the lungs?

_____ [1]

(iii) Place an X on the diagram to show the location of the lungs in the body. [1]

d. Which cavity contains the organs where:

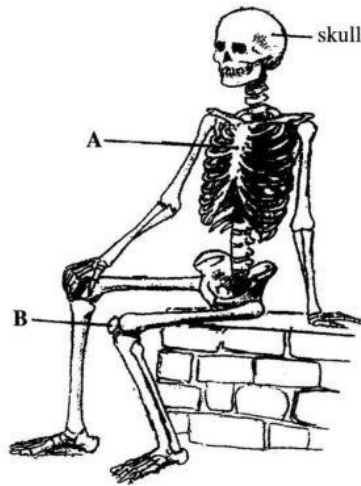
i. Breathing occurs _____

ii. Kidneys are located: _____

iii. Messages are interpreted? _____ [3]

TOTAL MARKS 10]

The diagram below shows a human skeleton.



- a. Give the scientific names of the bones labelled A and B.

A _____

B _____ [2]

- b. State TWO main functions of the skeleton.

1 _____

2 _____ [2]

- c. The human skeleton protects our internal organs. Complete the table below with the correct word.

	Skeleton Part	Organ Protected
1	Skull	
2		Spinal Cord
3	Rib Cage	

[3]

- d. What is the total number of bones found in an adult human skeleton?

_____ [1]

- e. Name **TWO** nutrients needed in the diet to develop strong, healthy bones.

1 _____

2 _____ [2]

END OF EXAMINATION