

7.1 – Circulatory System

1. Which of the following is not a part of the circulatory system? Select all that apply.

- A. Kidney
- B. Blood
- C. Lungs
- D. Heart

2. Which of the following is **NOT** a correct match between the part of the circulatory (cardiovascular) system and its function?

- A. Artery: brings blood toward the heart
- B. Blood: transports materials throughout the body
- C. Capillary: delivers supplies to cells and take away waste materials
- D. Heart: pumps blood all over the body

3. Which of the following is an incorrect match between the part of the circulatory system and its function?

- A. Blood: transports materials throughout the body
- B. Capillary: delivers supplies to cells and take away waste materials
- C. Vein: take blood away from the heart
- D. Heart: pumps blood all over the body

4. The two lower chambers of the heart are called_____.

- A. atria
- B. aorta
- C. vena cava
- D. ventricles

5. Which of the following is a function of the circulatory system? Select all that apply.

- A. Help regulates body temperature
- B. Allow muscles to contract and relax.
- C. Contains cell-fragment and proteins for blood clotting
- D. Transfer of messages from brain to muscles.

6. Which of the following is a function of the circulatory system? Select all that apply.

- A. Regulates the fluids in a body.
- B. Transport of oxygen and nutrients.
- C. Carries disease-fighting materials.
- D. Remove wastes in the form of sweat.

7. Which blood vessel is shown in the figure below?



- A. Valve
- B. Capillary
- C. Vein
- D. Artery

8. Which blood vessel is shown in the figure below?



- A. Valve
- B. Capillary
- C. Vein
- D. Artery

9. Which blood vessel is shown in the figure below?

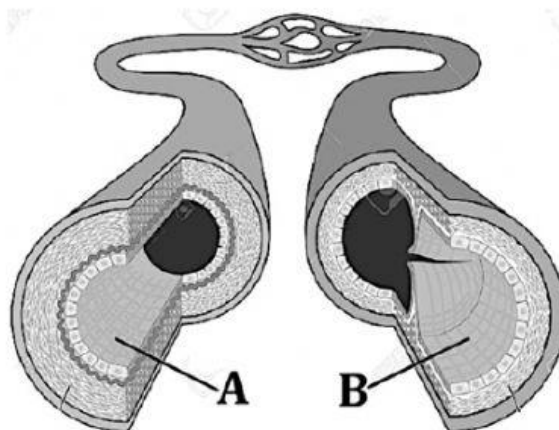


- A. Valve
- B. Capillary
- C. Vein
- D. Artery

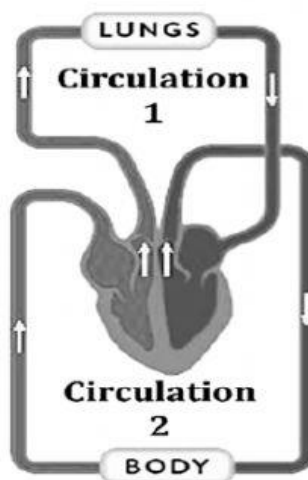
10. Answer questions **a** and **b** below regarding the circulatory system.

a. Use the diagram below to complete the table that it follows.

Criteria	Structure A	Structure B
Is it an artery or a vein ?		
Does it have valves? (Yes or No)		
Is the blood pressure in it high or low ?		



11. Use the diagram below to complete the table that follows.



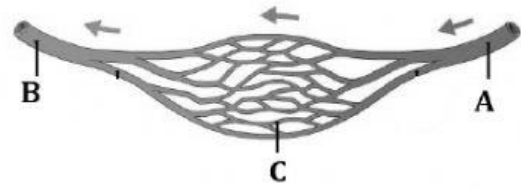
Criteria	Circulation 1	Circulation 2
Is it systemic circulation or pulmonary circulation ?		
Is the blood leaving the heart in this circulation oxygen-rich or oxygen-poor ?		
Does the blood leave from the right side or from the left side of the heart in this circulation?		

12. Based on the direction of blood movement, identify the blood vessels (**A**, **B** and **C**) in the body.

A:

B

C



13. Complete the following sentence using the words below.

circulatory	immune	lymphatic	heart
-------------	--------	-----------	-------

The _____ system consists of blood, the _____, blood vessels, and the _____ system. The lymphatic system is considered part of the circulatory and _____ systems.

14. Complete the following sentence using the words below.

arteries	veins	ventricles	atria
----------	-------	------------	-------

The _____ bring in blood to the _____ including inferior and superior vena cava and pulmonary vein, the _____ transfer the blood from the _____ including aorta and pulmonary artery.

15. Complete the following sentence using the words below.

systemic	deoxygenated	pulmonary	oxygenated
----------	--------------	-----------	------------

The heart pumps _____ blood to the lungs, this part of circulation is known as _____ circulation. The _____ circulation occurs when it pumps _____ blood to the body.

16. Match each blood component with its correct function by writing the letter of the function in front of the component.

Plasma	Cell fragments important in forming blood clots
Red blood cells	They are the body's disease fighters
Platelets	Carry oxygen to all body cells
White blood cells	Transports vitamins, minerals, and chemical messengers including hormones that signal body activities