

1.



2.



GO ON TO THE NEXT PAGE

3.



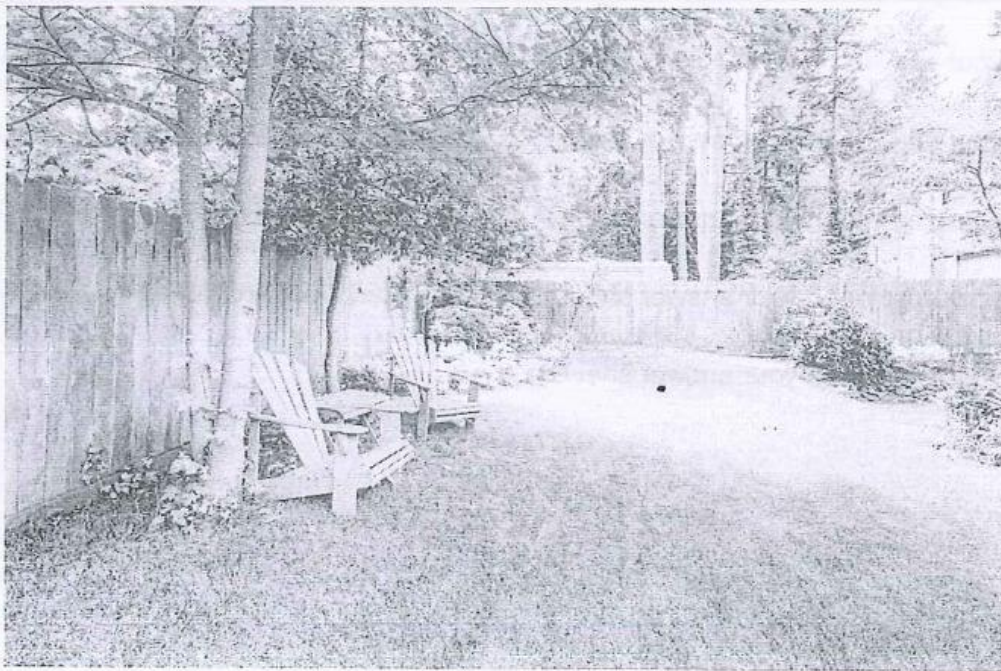
4.



5.



6.



GO ON TO THE NEXT PAGE

PART 2

Directions: You will hear a question or statement and three responses spoken in English. They will not be printed in your test book and will be spoken only one time. Select the best response to the question or statement and mark the letter (A), (B), or (C) on your answer sheet.

- | | |
|--|--|
| 7. Mark your answer on your answer sheet. | 20. Mark your answer on your answer sheet. |
| 8. Mark your answer on your answer sheet. | 21. Mark your answer on your answer sheet. |
| 9. Mark your answer on your answer sheet. | 22. Mark your answer on your answer sheet. |
| 10. Mark your answer on your answer sheet. | 23. Mark your answer on your answer sheet. |
| 11. Mark your answer on your answer sheet. | 24. Mark your answer on your answer sheet. |
| 12. Mark your answer on your answer sheet. | 25. Mark your answer on your answer sheet. |
| 13. Mark your answer on your answer sheet. | 26. Mark your answer on your answer sheet. |
| 14. Mark your answer on your answer sheet. | 27. Mark your answer on your answer sheet. |
| 15. Mark your answer on your answer sheet. | 28. Mark your answer on your answer sheet. |
| 16. Mark your answer on your answer sheet. | 29. Mark your answer on your answer sheet. |
| 17. Mark your answer on your answer sheet. | 30. Mark your answer on your answer sheet. |
| 18. Mark your answer on your answer sheet. | 31. Mark your answer on your answer sheet. |
| 19. Mark your answer on your answer sheet. | |

PART 3

Directions: You will hear some conversations between two or more people. You will be asked to answer three questions about what the speakers say in each conversation. Select the best response to each question and mark the letter (A), (B), (C), or (D) on your answer sheet. The conversations will not be printed in your test book and will be spoken only one time.

32. Where most likely does the man work?
(A) At an interior design firm
(B) At an apartment management office
(C) At a moving company
(D) At a hotel
33. What problem does the woman describe?
(A) An appliance is not working.
(B) A wall has been damaged.
(C) Some loud noises can be heard.
(D) Some furniture is uncomfortable.
34. What does the man ask the woman to do?
(A) Take some measurements
(B) Wait for a company representative
(C) Send him some pictures
(D) Read a set of instructions
-
35. Where most likely are the speakers?
(A) At a train terminal
(B) On an airplane
(C) At a restaurant
(D) At a park
36. What does the woman say has caused a problem?
(A) Some meals were not cooked properly.
(B) Some boxes have not been unpacked.
(C) A tour has too many participants.
(D) A form was filled out incorrectly.
37. What does the man ask for?
(A) A partial refund
(B) Some extra food
(C) Directions to a store
(D) A different seat assignment
-
38. What kind of service does the men's company provide?
(A) Advertising
(B) Catering
(C) Accounting
(D) Web design
39. Why has the woman hired the men's company?
(A) To grow her business
(B) To save money
(C) To follow a regulation
(D) To give herself more free time
40. What does the woman say about a suggestion?
(A) It has been tried before.
(B) It may not be effective.
(C) It would be expensive.
(D) It is complicated.
-
41. Which department does the woman most likely work in?
(A) Public Relations
(B) Human Resources
(C) Information Technology
(D) Sales and Marketing
42. What problem are the speakers discussing?
(A) A slow response time
(B) A scheduling conflict
(C) A customer complaint
(D) A missing detail
43. What does the woman recommend the man do first?
(A) Speak with his manager
(B) Check some software settings
(C) Post a correction notice
(D) Restart a machine
-

GO ON TO THE NEXT PAGE 

44. What is the man about to do?
(A) Clean some clothing
(B) Use a sewing machine
(C) Arrange a window display
(D) Test some product samples
45. What does the woman point out about a fabric?
(A) Its color is due to special chemicals.
(B) It has been decorated with beads.
(C) Its cost has recently risen.
(D) It is lightweight.
46. What does the woman agree to do?
(A) Increase some lighting
(B) Hold a hand tool
(C) Postpone a photo session
(D) Provide some training
-
47. Why does the man say he comes to the bakery frequently?
(A) It is near his home.
(B) It has a pleasant atmosphere.
(C) It sells a special type of baked goods.
(D) It has convenient operating hours.
48. Why does the woman say, "these chocolate cupcakes have marshmallow frosting"?
(A) To point out a mistake on a label
(B) To propose an alternative purchase
(C) To express surprise at a suggestion
(D) To explain a pricing decision
49. What does the woman offer the man?
(A) A onetime discount
(B) A list of the ingredients in a recipe
(C) A chance to attend a tasting session
(D) A takeout container
-
50. Where do the speakers most likely work?
(A) At a construction company
(B) At a warehouse
(C) At a farm
(D) At a car repair shop
51. What has caused a problem?
(A) Some packages have been misplaced.
(B) Some roads are closed.
(C) A staff member is out sick.
(D) A vehicle has broken down.
52. What does the woman say she will do?
(A) Work overtime today
(B) Put up a warning sign
(C) Conduct a safety inspection
(D) Contact another company
-
53. Who most likely is Ms. Lee?
(A) A journalist
(B) A city official
(C) A travel agent
(D) A researcher
54. What does the man say about the construction of a train line?
(A) It caused him to be late.
(B) It will take many years to complete.
(C) It will relieve crowding in other lines.
(D) It has shortened his commute.
55. What does Ms. Lee ask the man to do next?
(A) Show her a ticket
(B) Watch a video clip
(C) Sit down at a table
(D) Sign a document
-

56. What most likely is the mission of the speakers' organization?

- (A) To educate children
- (B) To take care of animals
- (C) To protect the environment
- (D) To support the arts

57. What does the man say he will do soon?

- (A) Earn a degree
- (B) Move away
- (C) Take a vacation
- (D) Donate some supplies

58. What does the woman mean when she says, "You've been an excellent volunteer"?

- (A) She is happy to fulfill the man's request.
- (B) She is sorry that the man is quitting.
- (C) She is surprised by the man's mistake.
- (D) She is pleased that the man will become more involved.

59. What are the speakers discussing?

- (A) A promotion
- (B) A career fair
- (C) An interview
- (D) A transfer

60. What does the woman say she has been doing?

- (A) Collecting some records
- (B) Processing some applications
- (C) Communicating with some recruiters
- (D) Replacing some equipment

61. What does the man give the woman?

- (A) A job advertisement
- (B) An applicant's résumé
- (C) An employment agreement
- (D) An orientation schedule

Bus Departures

Destination	Boarding Area	Time
Grammett	D	DEPARTED
Cookville	E	7:20 A.M.
Owenton	B	7:53 A.M.
Grammett	D	8:04 A.M.
Cookville	E	8:10 A.M.

62. What are the speakers going to do?

- (A) Visit a factory
- (B) Oversee a building project
- (C) Participate in a conference
- (D) Attend an awards ceremony

63. What did the woman initially forget to bring?

- (A) A set of gifts
- (B) A travel document
- (C) Some special clothing
- (D) Some presentation materials

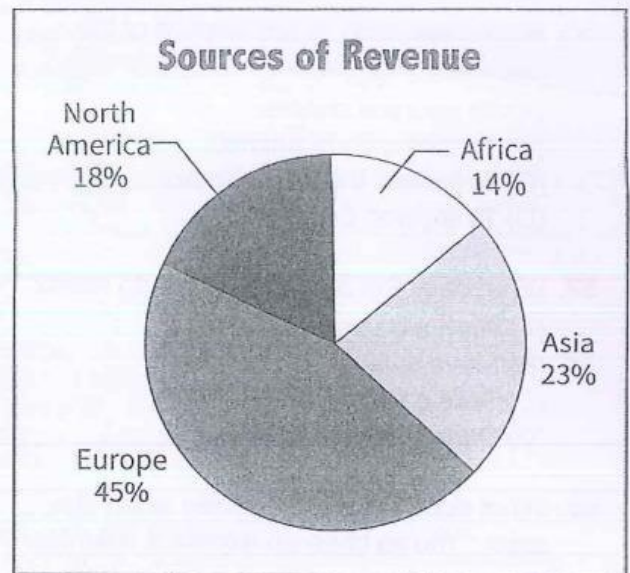
64. Look at the graphic. When does the man suggest departing?

- (A) At 7:20 A.M.
- (B) At 7:53 A.M.
- (C) At 8:04 A.M.
- (D) At 8:10 A.M.

GO ON TO THE NEXT PAGE →

Brooks Gym <i>Buy a class package and save!</i>		
	Total	Savings per class
5 classes	\$90	\$2
10 classes	\$160	\$4
15 classes	\$210	\$6
20 classes	\$240	\$8

65. Where most likely did the man get the coupon?
- (A) At a gym class
(B) On the street
(C) In the mail
(D) On a Web site
66. Look at the graphic. How much will the man save per class?
- (A) \$2
(B) \$4
(C) \$6
(D) \$8
67. What does the woman say about the class packages?
- (A) They were recently introduced.
(B) They are valid for a limited time.
(C) They are not eligible for refunds.
(D) They allow entry to any type of class.



68. Look at the graphic. Which figure does the woman say is larger than before?
- (A) 14%
(B) 18%
(C) 23%
(D) 45%
69. According to the man, what does the company plan to do?
- (A) Enter an additional industry
(B) Replace its chief executive
(C) Relocate its headquarters
(D) Expand into a new region
70. What does the man recommend reading?
- (A) A section of a report
(B) An article on a Web page
(C) A summary of some laws
(D) An invitation to a celebration