

## 1 Read the text and label the diagram using the words in bold.

### The Stomach

Your **stomach** has the shape of the letter J. It is mostly an empty bag. Everyone's stomach is about the same size: 30 cm long and 15 cm wide.

### What does the stomach do?

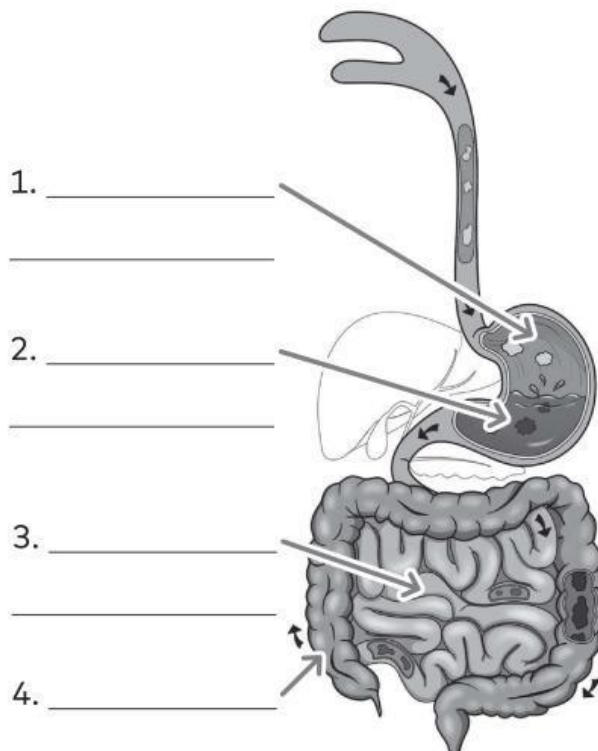
The main jobs of the stomach are to store and break down the food that you eat.

The stomach contains **gastric acid**, which prepares the food for digestion. The stomach turns and mixes the food with the acid. This mixture of food and acid is called *chyme*. The chyme then passes through to the **small intestine**, where the body absorbs most of the nutrients it needs.

The small intestine then sends the rest of the food to the **large intestine**, so that it can be excreted.

### Fun Facts

- The stomach produces 1.5 liters of gastric acid a day.
- It takes 6 to 8 hours for food to be completely digested.
- We should eat between 3 and 6 meals a day.



- Which organ performs each function? Write **S** for *stomach*, **SI** for *small intestine* and **LI** for *large intestine*.

- |                                 |                          |   |                          |
|---------------------------------|--------------------------|---|--------------------------|
| 1. stores food                  | <input type="checkbox"/> | 5. sends food to the large intestine                  | <input type="checkbox"/> |
| 2. produces gastric acid        | <input type="checkbox"/> | 6. excretes the rest of the food not used by the body | <input type="checkbox"/> |
| 3. mixes food with gastric acid | <input type="checkbox"/> |   |                          |
| 4. absorbs nutrients            | <input type="checkbox"/> |   |                          |

- Match the numbers with what they represent.

1.5

3 to 6

6 to 8

meals we should eat a day

hours food takes to be completely digested

liters of gastric acid the stomach produces a day