

HOMework: WEEK 13

Exercise 1: Look and write the word. (em hãy viết các từ dưới tranh.)

bus station shopping centre playground circus hospital
funfair car park market square supermarket train station town



Exercise 2: Choose the best answer. (em hãy chọn đáp án đúng nhất.)



1. Where's the café? => It's below the _____.
2. Where's the square? => It's opposite the _____.
3. Where's the zoo? => It's behind the _____.
4. Where's the bus station? => It's next to the _____.
5. Where's the hospital? => It's near the _____.
6. Where's the library? => It's above the _____.
7. Where's the supermarket? => It's between the _____ and the _____.
8. Where's the playground? => It's next to the _____.

Exercise 3: Look at this picture. Fill in: on (x4), above, under, behind, next to.



This is Tom's room. Can you see him? He's (1) on a rug (2)..... the bed.

Tom's mother is very angry with him. His clothes are (3)..... the bed.

There are empty cans of cola (4)..... the table, too. His toys are (5)..... the floor, (6)..... the chair, everywhere! Where are his books? They are (7)..... his bed. Look at the picture (8)..... his bed. It's so dirty! Oh Tom! Clean your room!

Exercise 3: Read and write the name. (Em hãy đọc và viết tên vào vị trí thích hợp.)

Charlie – Vicky – Peter – Zoe – Paul

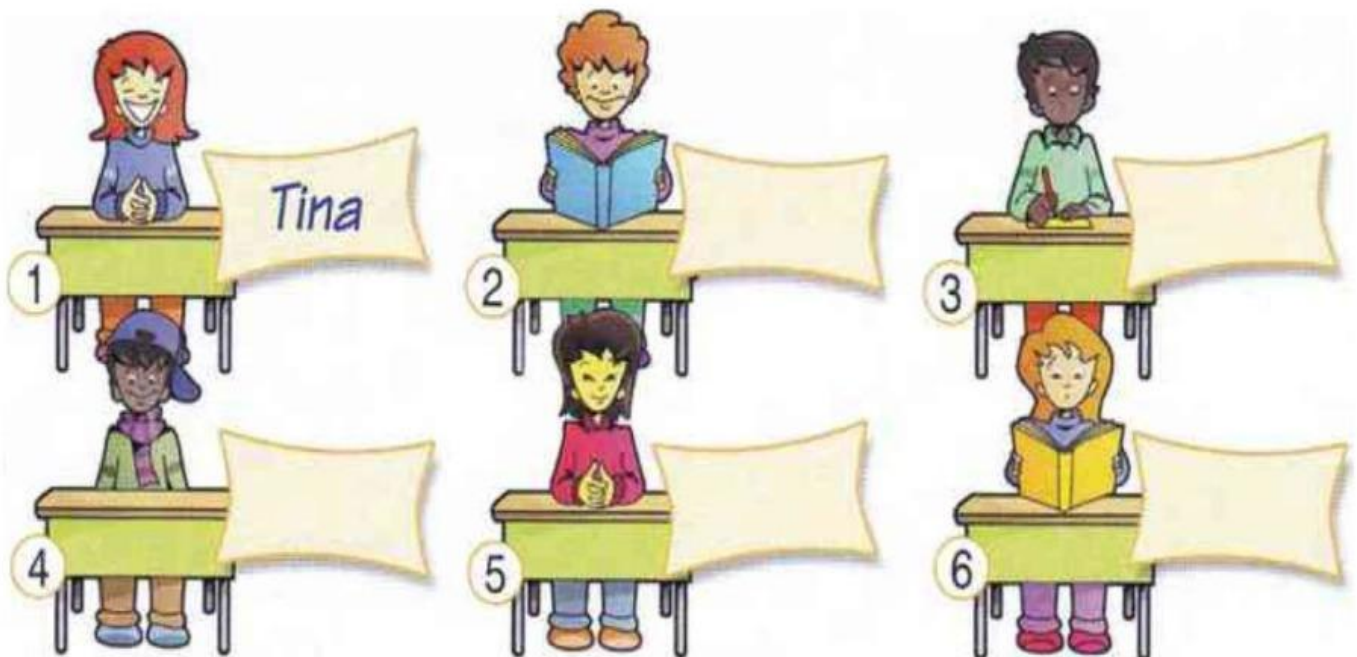
Tina is next to Charlie.

Peter is behind Vicky.

Vicky is next to Zoe.

Paul is in front of Tina.

Charlie is behind Zoe



Movers practice test

Listening, Part 3

Peter is telling Mrs Green about his family and friends and where they went today. Where did each person go?

Listen and write a letter in each box. There is one example.  17



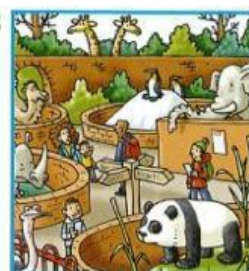
Charlie

E

A



B

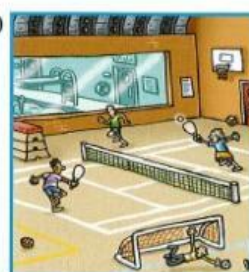


his dad

C



D

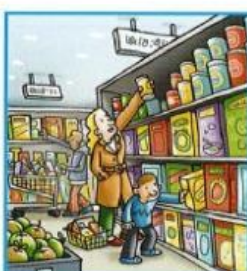


his brother



Jim

E



F



his sister



Lily

G



H

