



1. CHOOSE THE CORRECT ANSWER.

You **must** / **may** tell me the truth.

1 **Can I** / **Do I have to** watch this film, please?

I like action films.

2 **Shall** / **Must** we eat now? I'm starving.

3 I **can** / **could** swim when I was three.

4 You **don't have to** / **can't** bring a camera.

I have one.

5 **May I** / **Do I have to** wear this uniform? I hate it!

6 You **can** / **must** be quiet in here. People are studying.

7 **May** / **Must** I ask you a question, please?

8 **Must** / **Can** I go to the park, please? Sue is going, too!

2. WRITE HAVE TO OR DON'T HAVE TO.

- get up early (✓)
- feed the children (✓)
- pick up the children from school (✓)
- wash the clothes (X)
- take the children to school (X)
- cook lunch (✓)

You *have to* get up early.

3 You ..... take the children to school.

1 You ..... wash the clothes.

4 You ..... pick up the children from school.

2 You ..... feed the children.

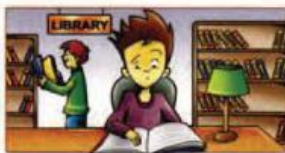
5 You ..... cook lunch.

3. LOOK AT THE PICTURE AND CHOOSE THE CORRECT WORD



(Mark/at the circus/  
yesterday)

*Was Mark at the  
circus yesterday?  
Yes, he was.*



1 (the boys/at the park/  
yesterday evening)



2 (Mary/at the zoo/last  
Sunday)



3 (Juan/in London/last  
summer)



4 (the girls/at a party/  
yesterday afternoon)



5 (Cara/at the theatre/last  
night)

4. WRITE THE QUESTIONS. USE THE WORDS IN BRACKETS.

I don't want to wear a uniform at school.

(have to)

*Do I have to wear a uniform at school?*

1 I want to go to the cinema. (may)

2 I want to use your computer. (can)

3 I don't want to do my homework. (have to)

4 I want to visit my friend Jeff. (can)

5 I don't want to get up early. (have to)

6 I'll bring Emma an aspirin. (shall)

5. LOOK AT THE PICTURES. LISTEN AND DRAW LINES. THERE IS ONE EXAMPLE.

- Where was Kelly last week?

Green zoo ticket Visit me!! 09:00-19:00

Rex in the rain Peter Crompton

HOSPITAL

Monday

Tuesday

Wednesday

Thursday

Friday

Saturday

Sunday

LIBRARY

HAPPY BIRTHDAY