

Part 3: Exam practice

Section 1

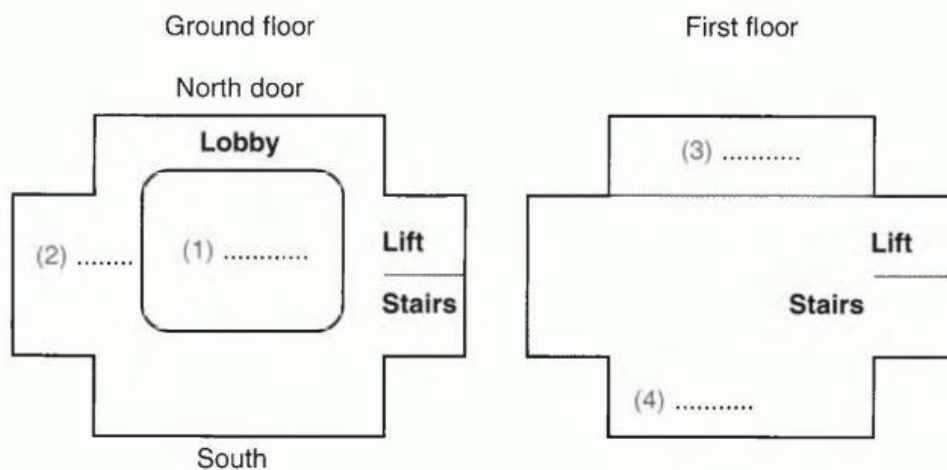


41

Questions 1–4

You will hear Lily explaining to Chen how to use the library. Label the plan of the library.

- A PC Zone
- B Library Café
- C Cookbooks
- D Travel
- E Silent zone



42

Questions 5–7

Listen to the next part of the recording and complete the sentences. Write only TWO WORDS.

- 5 First look up the title in the
- 6 The class mark is one or two letters and
- 7 The shows you where to look for the books.



43

Questions 8–10

Listen to the last part of the recording and answer the questions. **WRITE NO MORE THAN THREE WORDS.**

- 8 What do you need to scan first?
- 9 What does the scanner do when you scan a book?
- 10 What does the system do at the end?

Progress check

How many boxes can you tick? You should work towards being able to tick them all.

Did you ...

think about the words you expected to hear before you listened?

look carefully at the information you have on the question paper?

listen for key words by concentrating on the words that are spoken with more stress?

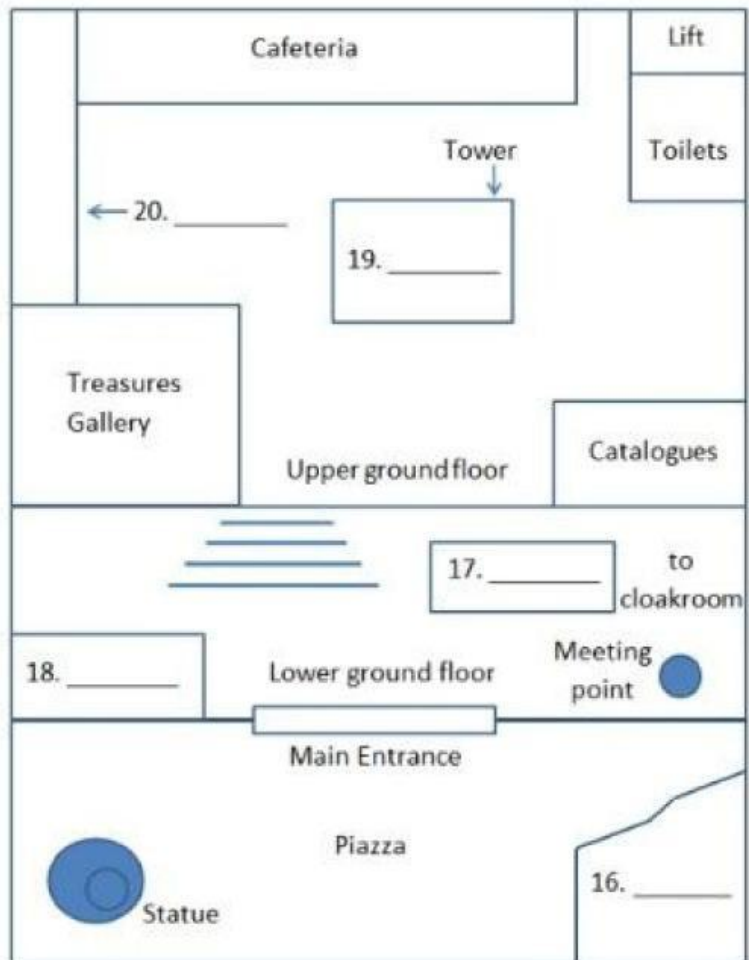
make sure your answers were grammatically correct when you completed the sentences?

UNIT 5:

LISTENING SKILLS: PLAN/MAP LABELING

Label the plan below.

Write NO MORE THAN THREE WORDS for each answer.



16.

17.

18.

19.

20.

GAP-FILL ACTIVITY

Right, well, here we are, standing at the Meeting Point on the lower ground floor just to the right of the Main (1)_____. I've given you all a plan of the building so that we can orientate ourselves and get an idea of where we'll be going. Now outside the Main Entrance you'll see the wide Piazza with the stunning (2)_____ of Newton.

The sculptor was Paolozzi, but it's based on the famous (3)_____ by William Blake – and it's definitely worth a closer look. On the other side of the Piazza from the (4)_____ is the Conference Centre [16], which is used for all kinds of (5)_____ conventions – we'll take a quick look inside at the end of our (6)_____.

Looking ahead of us now, you'll see that we're standing (7)_____ the staircase down to the (8)_____ where you'll find the cloakroom, and to the left of that, we have the information desk where you can find out about any current (9)_____, the times of the tours and anything you need to know – if you don't have a tour (10)_____. As you can see, on this lower ground floor we also have a bookshop – that's the area over to the left of the main entrance]. You'll be (11)_____ - to browse there when we get back to the ground floor.

Now, opposite the main entrance on this floor we have the open (12)_____ leading up to the upper ground floor. And at the (13)_____ of them, in the middle of the upper ground floor, you can see a kind of glass-sided tower that rises all the way up through the (14)_____ and up to the first floor. This is called the King's Library – it's really the heart of the building – it was built to house the (15)_____ that was presented to the nation in (16)_____ by the King. You can see it from every floor (17)_____ ground. When we go up there, you'll find the library's Treasures Gallery on the left. Can you find it on your plan? That's the exciting one, so we'll be visiting that first, but we'll also take a look at the stamp display (18)_____ behind it, on the way to the cafe – a lot of people miss that. The Cafeteria runs along the back of the floor and, in the right hand corner, you'll find the (19)_____ and toilets... ha, always good to locate them. The other main area on that floor is the Public Access Catalogue (20)_____ and I'll show you how that operates when we get up there...