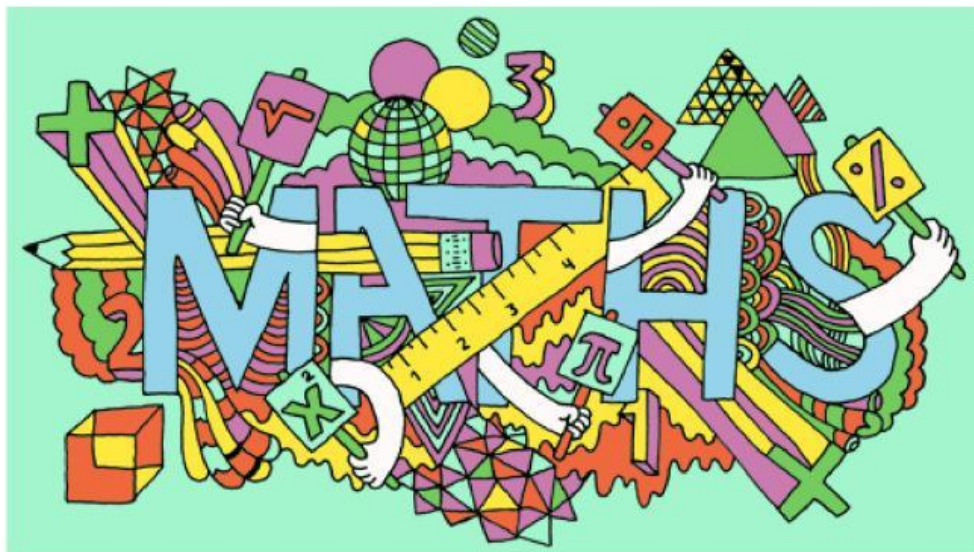




# Maths Department

## Pre-test Practice Easy 15

Featuring whole numbers, fractions, geometry, areas and volumes, averages



Name: \_\_\_\_\_

Question 1

Six books cost £3.95 each. How much do they cost altogether?

£24.00

£23.00

£23.50

£23.95

£23.70

Question 2

Eight boxes cost 49 pence each. What is the total cost of the boxes?

£3.92

£3.99

£3.98

£3.90

£4.00

Question 3

12 pencils cost 95 pence each. What is the total cost?

£11.40

£10.40

£12.40

£11.60

£12.00

Question 4

Nine books cost £2.95 each. How much do they cost altogether?

£27.00

£26.95

£26.55

£26.25

£26.00

Question 5

Eight boxes cost 45 pence each. What is the total cost of the boxes?

£410

£2.00

£3.60

£4.10

£4.00

Question 6

15 pencils cost 98 pence each. What is the total cost?

£14.70

£14.90

£15.70

£15.90

£15

Question 7

What do you have left if you started with 2.5 kg of sugar and then poured out 800 g ?

797.5 kg

797.5 g

1500 g

1700 g

1200 g

Question 8

A container has 3.5 litres of water in it. I pour out 1.2 litres. How much is left now?

2.3 litres

2.5 litres

3.2 litres

4.7 litres

230 ml

Question 9

How many ml are there in 0.7 litres?

70 litres

700 litres

7 ml

70 ml

700 ml

Question 10

The temperature at noon was  $18.5^{\circ}\text{C}$ . By midnight it had fallen by ten degrees. What was the temperature at midnight?

$8.5^{\circ}\text{C}$

$8^{\circ}\text{C}$

$28.5^{\circ}\text{C}$

$28^{\circ}\text{C}$

$0^{\circ}\text{C}$

Question 11

The temperature at 6pm was  $5^{\circ}\text{C}$ . By midnight it had fallen by 7 degrees. What was the temperature at midnight?

$7^{\circ}\text{C}$

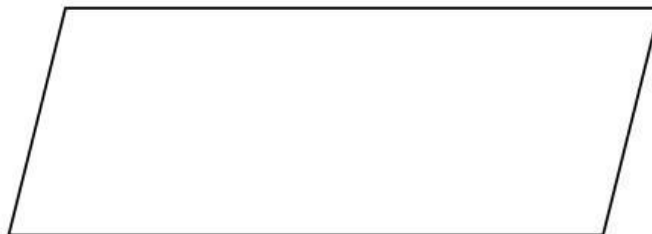
$12^{\circ}\text{C}$

$-2^{\circ}\text{C}$

$2^{\circ}\text{C}$

$-12^{\circ}\text{C}$

Question 12



What is the **order of rotational symmetry** of a parallelogram?  
(How many times will it spin on to itself in one rotation?)

0

1

2

4

8

Question 13

How many *lines of symmetry* does a parallelogram have?



0

1

2

4

5

Question 14

Which of these words or phrases is the odd one out?

Right angle

equilateral

isosceles

scalene

kite

Question 15



What is the area of a rectangle that has dimensions 10cm by 4.7 cm?

47 cm

47 cm<sup>2</sup>

4.7 m

4.7 cm

94 cm<sup>2</sup>

Question 16

6cm

Area of rectangle =  $30 \text{ cm}^2$

Length?

What is the height of a rectangle that has a length of 6 cm and an area of  $30 \text{ cm}^2$ ?

36 cm

$180 \text{ cm}^2$

180 cm

$5 \text{ cm}^2$

5 cm

Question 17

The volume of a mug of tea is measured.  
Which is the *most likely* volume?

15 ml

100 ml

100 litres

15 litres

950 ml

Question 18

Find the mean average of the following three temperatures:

$37^\circ$

$25^\circ$

$43^\circ$

$35^\circ$

$25^\circ$

$30^\circ$

$37^\circ$

$33^\circ$

## Question 19

Find the mean average of the following five lengths:

14 cm      19 cm      11 cm      12 cm      14 cm

19cm	15cm	16cm	14cm	17cm
------	------	------	------	------

## Question 20

Find the mean average of the following temperatures:

1°      4°      3°      2°      0°      4°      7°      3°      2°      4°

0°	1°	2°	3°	4°
----	----	----	----	----