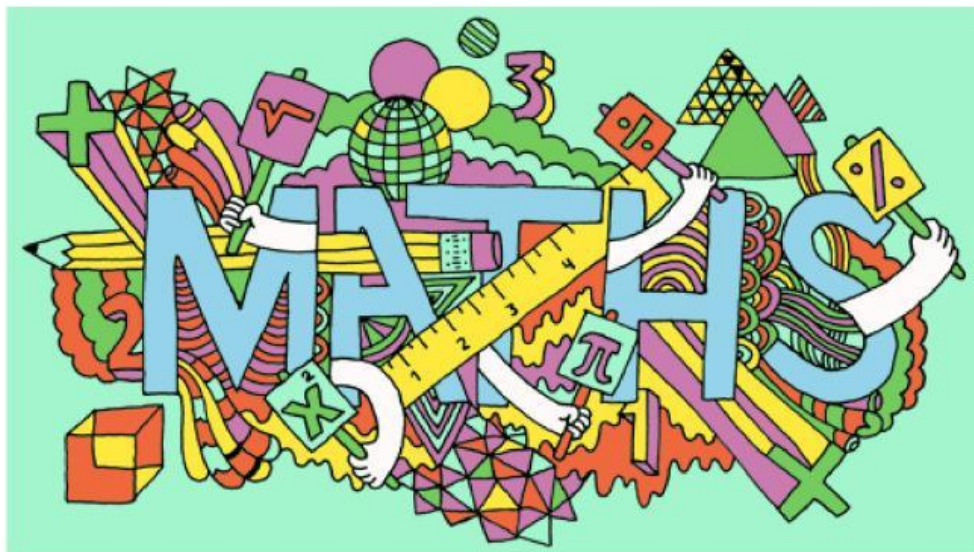




Maths Department

Pre-test Practice Easy 14

Featuring whole numbers, fractions, geometry, areas and volumes, averages



Name: _____

Question 1

Eight books cost £3.95 each. How much do they cost altogether?

£7.90

£32

£29.60

£31.60

£33.60

Question 2

Five boxes cost 49 pence each. What is the total cost of the boxes?

£2.45

£24.50

£2.50

£25.00

£2.49

Question 3

12 pencils cost 98 pence each. What is the total cost?

£11.86

£11.96

£11.76

£11.98

£12.00

Question 4

A container holds 5.5 litres of water. 800 ml is poured away.
How much water is left now?

47 litres

4700 ml

4800 ml

805 litres

4.5 litres

Question 5

From an 8.5 tonne pile of sand, 1200 kg is removed. How much
sand remains?

7.3 tonnes

7.5 tonnes

8.2 tonnes

7 tonnes

6.5 tonnes

Question 6

A length of rope is 8.6 metres long.
150 cm is cut from it. How long is the remaining tape?

710 cm

760 cm

810 cm

141.4 cm

0.7 metres

Question 7

Which of the following numbers is equal to $\frac{3}{7}$?

$$\frac{3}{14}$$

$$\frac{6}{7}$$

$$\frac{6}{14}$$

$$\frac{9}{28}$$

$$\frac{30}{77}$$

Question 8

Which of the following numbers is equal to $\frac{7}{10}$?

$$\frac{4}{11}$$

10.7

7.10

0.7

$$\frac{7}{40}$$

Question 9

Which of the following numbers is equal to $\frac{3}{4}$?

0.34

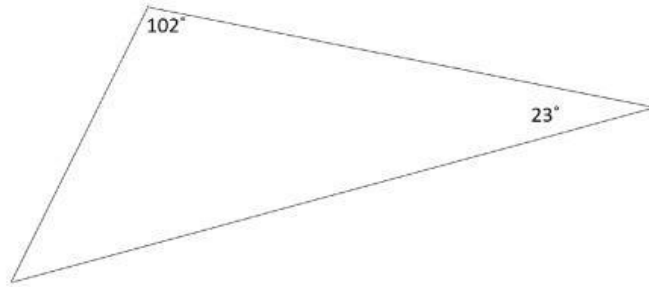
0.75

$$\frac{4}{10}$$

25%

3.4

Question 10



What is the size of the third angle?

45°

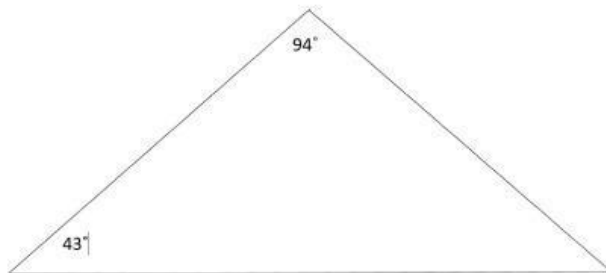
75°

125°

65°

55°

Question 11



What is the size of the third angle?

43°

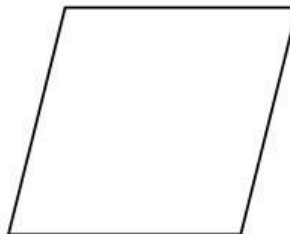
137°

53°

127°

94°

Question 12



What is the **order of rotational symmetry** of a rhombus? (*How many times will it spin on to itself in one rotation?*)

0

1

2

4

8

Question 13

How many *lines of symmetry* does a parallelogram have?



0

1

2

4

5

Question 14

Which of these shapes is the odd one out?

trapezium

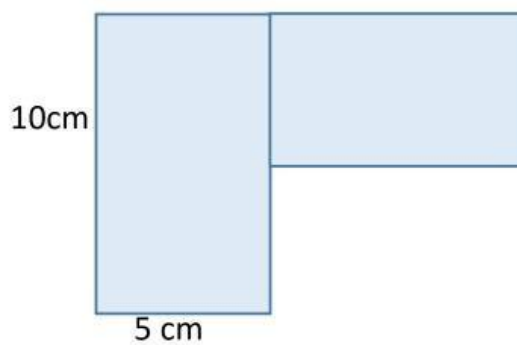
square

rhombus

pentagon

kite

Question 15



The shaded area is made of two identical blocks. What is the **perimeter** of the shaded shape?

50 cm

50 cm²

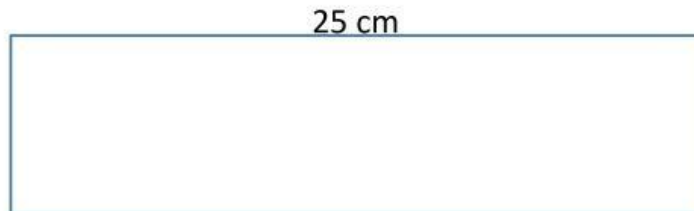
100 cm²

100 cm

15 cm

Question 16

The **area** of the rectangle is 100 cm^2 . The length of the rectangle is 25 cm. What is the height of the rectangle?



2500 cm^2

4 cm

4 cm^2

164 cm^2

254 cm^2

Question 17

The area of a school desk is measured.
Which is the *most likely* area?

12.4 m^2

2400 m^2

24 m^2

$240,000 \text{ m}^2$

1.2 m^2

Question 18

Find the mean average of the following three numbers:

17

15

13

5

14

3

16

15

Question 19

Find the mean average of the following four lengths:

7 cm

19 cm

11 cm

11 cm

12

5

6

4

10

Question 20

Find the mean average of the following five temperatures:

21°

14°

13°

12°

20°

10°

80°

16°

20°

8°