

Al Sadara School, Al ain	
Grade 6 Science lab Worksheet	
Name	
Class	

### Learning Objectives:

- identify which organelles are found in plant and animal cells
- relate the structure of organelles to their function

### Introduction:

Cells are the building blocks of all living organisms. Every cell has an important role. Inside each cell, there are **organelles** that ensure the cell keeps doing its job. Different organelles also have different jobs.

In today's activity, you will explore the different functions of organelles and relate them to their structures.

### Procedure:

- open ALEF Lesson 85
- use the simulation to explore the plant and animal cells
- follow the instructions

### Instructions:

- click "Enter" to begin
- read the instructions, click to close them when you are ready
- select a plant cell
- click and drag the organelles that can be found in a plant cell
- check that you have the same organelles in your plant cell above
- make a note of missing organelles
- repeat for an animal cell

Compete the following work sheet

Label the parts of the cell:

Figure 1:

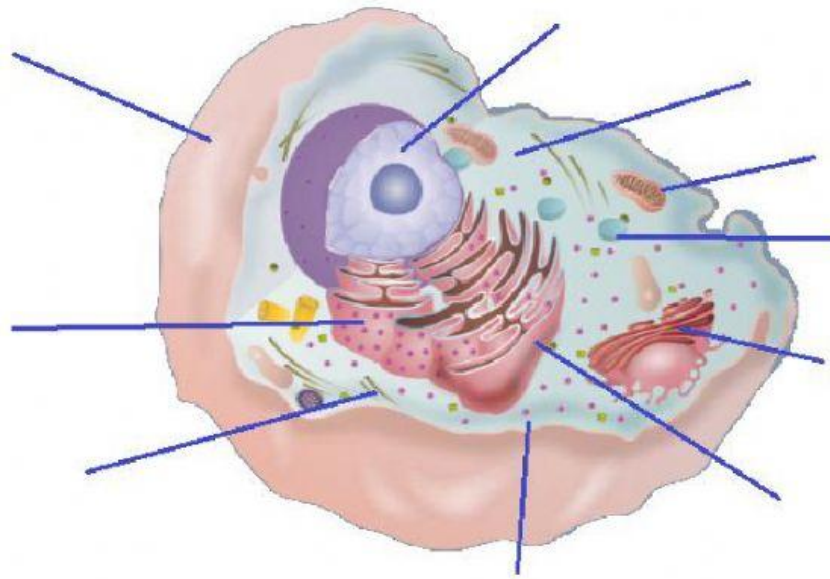
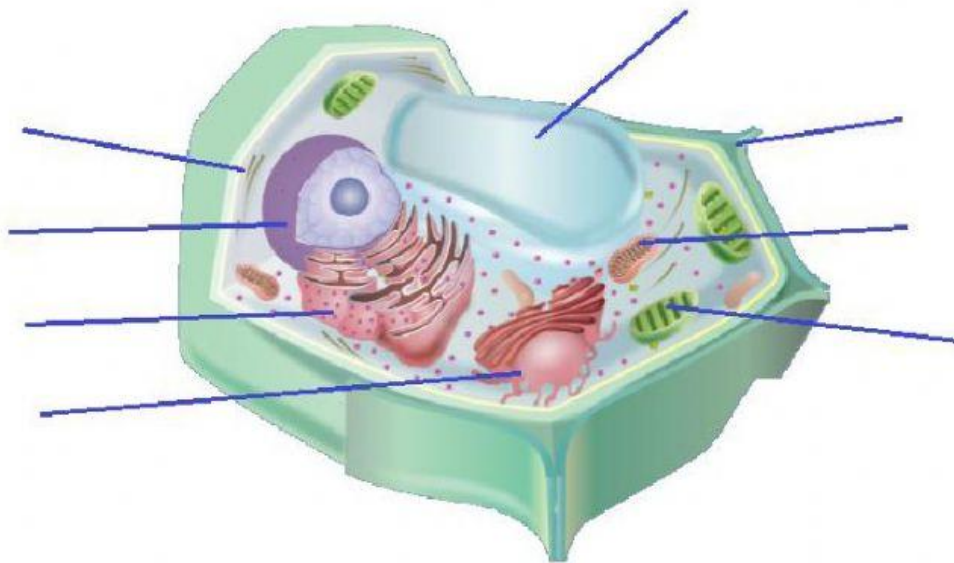


Figure 2:



Conclusion:

Match the cell organelles with their functions:

Endoplasmic reticulum
Cell membrane
Mitochondria
Vacuole
Nucleus
Chloroplast

Stores food, water and waste materials

Process energy and store energy in ATP

It spreads from nucleus throughout most cytoplasm and makes proteins and lipids

Contains genetic material and genetic information

A flexible covering that protects inside cell from environment

Use light energy to make sugar and oxygen from carbon dioxide and water