

1a

- 1 $100 - 26$.
- 2 Seven sixes.
- 3 Treble 5.
- 4 35×2 .
- 5 $27 + 43$.
- 6 How many metres is 321 cm?
- 7 $9 \div 2$.
- 8 $\square \times 4 = 44$.
- 9 Add 3, 8 and 5.
- 10 Approximately, what is 21×19 ?

1b

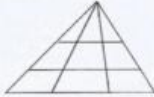
- 1 Add the odd numbers between 8 and 14.
- 2 Does my car hold 40 litres or 40 millilitres of petrol in its tank?
- 3 Write **two thousand and seventeen** in figures.
- 4 Lucy and Ben shared 12p and 18p equally between them. How much did each of them get?



- 5 The bus had 32 people on it. 8 got off and 9 got on. How many were on the bus then?

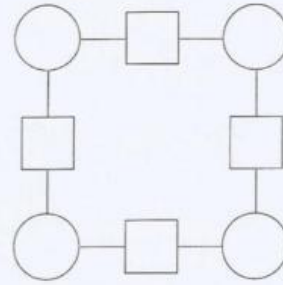
- 6 What number divided by 7 gives 7?
- 7 4 toffees cost 20p. How much are 12 toffees?
- 8 What is twice the sum of 7 and 15?
- 9 I have seven 5p coins. If I spend 22p, how much is left?

- 10 How many triangles can you see altogether?



1c

Copy the diagram.



Use each of the numbers 1 to 8.
Write one number in every square and circle.

A number in a square must equal the sum of the two numbers on each side of it.

1 2 3 4 5 6 7 8

1d

- 1 $72 - 44$.
- 2 $10 \div 4$.
- 3 Double 29.
- 4 $9 \times 5 + 4$.
- 5 $38 + 55$.
- 6 How many pence is £7.58?
- 7 $300 - 250$.
- 8 Add 4, 9 and 7.
- 9 7×9 .
- 10 $90 \div 3$.

2a

- 1 20 bottles fill a crate.
How many full crates will 90 bottles make?
- 2 If 5 choc-bars cost 15p, what will 20 cost?
- 3 It is 240km from here to Nottingham.
How far is it there and back?



- 4 Does my new baby sister weigh
3kg, 30kg or 300g?
- 5 What is the average of 3, 10 and 5?
- 6 If $9 \times 17 = 153$, what is 9×18 ?
- 7 Put in order, smallest first: 0.9, 1.3, 0.27.
- 8 Which area is less: a page of this book or 100cm^2 ?
- 9 Approximately, what is double 159?



- 10 Egg boxes hold a dozen eggs.
How many boxes are needed for 50 eggs?

2b

- | | |
|-------------------|----------------------------------|
| 1 Seven squared. | 6 Nine eights. |
| 2 48×2 . | 7 How many 50p coins make £7.50? |
| 3 $71 - 34$. | 8 $42 \div \square = 6$. |
| 4 $17 \div 2$. | 9 $11 \times 5 + 2$. |
| 5 $46 + 18$. | 10 One third of 69. |

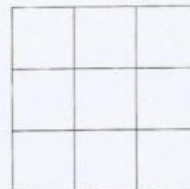
2c

- | | |
|-----------------------------|-------------------------------|
| 1 $27 + 29$. | 6 Twice twenty-five. |
| 2 $36 \div 3$. | 7 Add 6, 9 and 3. |
| 3 $5 \times \square = 40$. | 8 $21 \div 4$. |
| 4 $84 - 38$. | 9 How many 20p coins make £3. |
| 5 Half of 72. | 10 How many days is 8 weeks? |

2d

Stamp card

This card has squares for nine stamps.



Imagine you have plenty of 1p, 2p, 3p, 4p and 5p stamps.

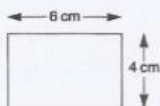
Each horizontal, vertical or diagonal line of three squares must have three different stamps.

What is the greatest value you can put on the card?

Copy the diagram and show how you could do it.

3a

- 1 Add 5 to 13 minus 9.
- 2 Buns are 10 for £1. What do 6 buns cost?
- 3 It is Thursday, 3rd April. What date was last Sunday?
- 4 How many hundreds make 8000?
- 5 A rectangle is 6 cm by 4 cm. What is its area?
- 6 If $15 \times 6 = 90$, what is 15×12 ?
- 7 It is 19:00 hours. What time was it 40 minutes ago?
- 8 Find the cost of 20 chews at 5 for 4p.
- 9 How much longer is 25 days than 2 weeks?
- 10 What is the change from £1 for 8 crayons at 5p each?



3b

You have two 35p and two 20p stamps.

If you send a parcel using one or more of your stamps, what might it cost?



Write the cost of each possible parcel, starting with the cheapest.

3c

- 1 What is the angle between 5 and 8 on a clock-face?
- 2 The perimeter of a square is 8 metres. What is the length of one edge?
- 3 What number is half way between 32 and 40?
- 4 If $8 \times 25 = 200$, what is 16×25 ?
- 5 Round 4.3 to the nearest whole number.
- 6 What is the cost of 20 compact discs at £6 each.
- 7 I use 42 litres of petrol each week. How much is that each day?
- 8 How many tens make 3000?
- 9 How many kilograms is 750g?



- 10 Each small square is $1\text{cm} \times 1\text{cm}$. What is the area of the shaded triangle?



3d

- | | |
|-----------------------------|-------------------------------------|
| 1 Eight sevens. | 6 $34 + 47$. |
| 2 $51 - 35$. | 7 Roughly, what is 197×3 ? |
| 3 Add 7, 9, 2 and 4. | 8 $74 \div 2$. |
| 4 $33 \div 4$. | 9 How many sixes make 54? |
| 5 $\square \times 5 = 55$. | |