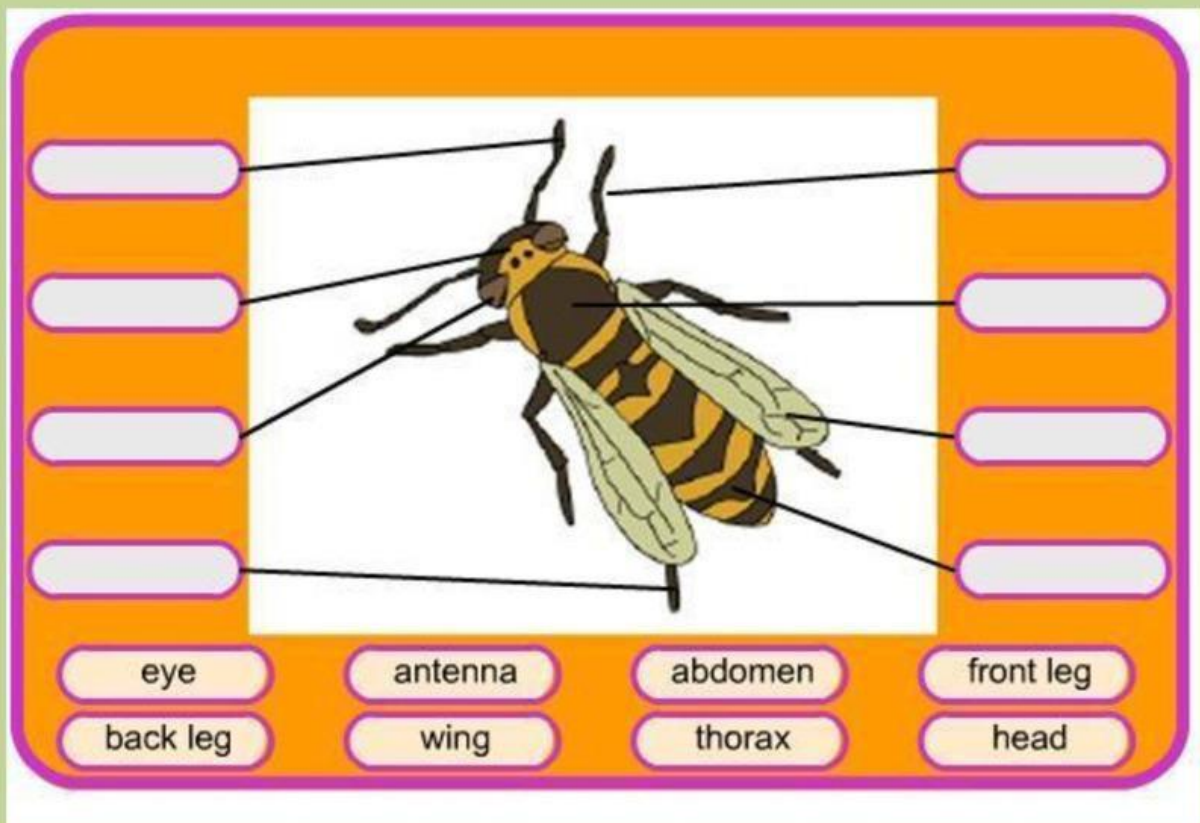


The Honey Bee

1. Watch the video about the Honey Bee.



2. Drag the words to the right places.



3. Complete the sentences.

Bees are animals, they belong to the group of

They have a hard that protects their body. They breathe with an . They have legs and body parts. These are the , and . They have got two pairs of .

wings invertebrate head air-tube system insects

six jointed exoskeleton three thorax abdomen

4. Find the pairs.

Her task is to lay eggs.	drones
They do all the work.	dance
They are the father bees.	queen
Bees use this if an enemy attacks.	hibernate
Bees use this to communicate.	stinger
Bees do this in winter.	hive
Bees live here.	workers

5. True or False?

Bees suck up nectar with their long legs.

The worker bees feed the drones.

Bees store the nectar in their stomach.