

PYRAMID SCHEMES

VOCABULARY: match 1-8 to a-h to make complete sentences

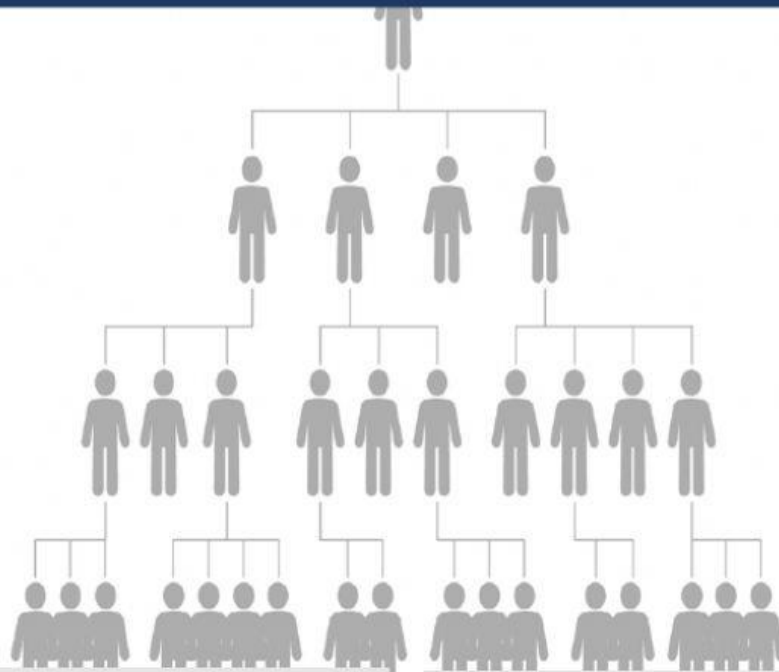
- | | |
|---|--|
| 1. She is the best salesperson in the company. She brings | a) a membership fee |
| 2. We need to recruit | b) can entice anyone. |
| 3. If you want to join us, you need to pay | c) on this opportunity. |
| 4. Can you pay | d) I didn't buy into it |
| 5. This business is so good that it | e) in about 300 new customers per month. |
| 6. We are in an excellent position to invest, so it's clear we need to capitalize | f) more members if we want to get some return on investment. |
| 7. I must accept that the idea was compelling, but | g) in this cheque for me? |
| 8. Only the first members benefit from the system at first. However, all of them | h) will lose out in the end. |

GRAMMAR: select the correct option to complete the sentences

- 1) This scheme is _____ than the traditional business models.
- 2) This may be _____ way to make money, but it's definitely _____ one, too.
- 3) Andrey brings in _____ than anyone else in the company, so he is _____ salesman.
- 4) As time went by, his memories have become _____ than ever.
- 5) They own 55% of the company, so they have _____ share.
- 6) In my opinion, Ponzi Schemes are _____ Pyramid Schemes. They are the same.
- 7) With more than 23 million dollars in revenues per month, this is _____ company in the industry.

PYRAMID SCHEMES

VIDEO: Watch the video and select the correct option to answer the questions



1) When was the term Ponzi scheme used for the first time?

- a) In 1920
- b) In 1934
- c) In 2009

2) How much did Charles Ponzi's investment operation cost his clients?

- a) Approximately 20 million dollars
- b) More than 20 million dollars
- c) A little more than 20 million dollars

3) Who was the mastermind behind the largest investment fraud operation in the history of the USA?

- a) Charles Ponzi
- b) Bernie Madoff
- c) Donald Trump

4) When was Bernie Madoff sentenced to prison?

- a) In 150
- b) In 2009
- c) In 1920

5) What happens as the pyramid grows?

- a) The returns increase
- b) The returns remain stable
- c) The returns get smaller

6) Who end up with the biggest losses?

- a) Those at the top
- b) Those at the bottom
- c) The scheme owners