

Date: \_\_\_\_\_

1. Complete the sentences using the correct form of the verbs in the box.

Sink

Flow

Enter

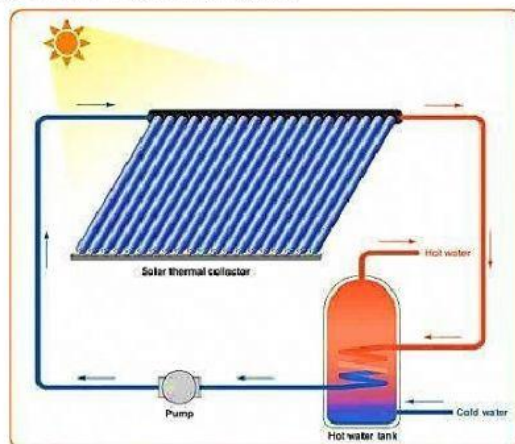
Leave

Push

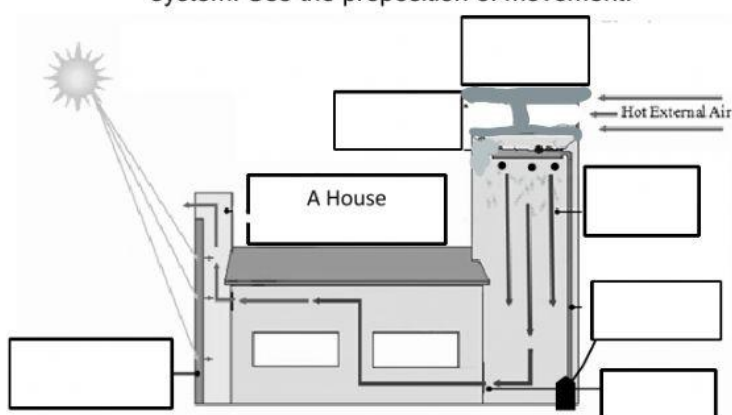
Heat

Rise

- Cold water \_\_\_\_\_ the system through the inlet into the tank
- The pump \_\_\_\_\_ the cold water into the solar panel.
- Water \_\_\_\_\_ through the solar panel.
- The sun's rays \_\_\_\_\_ the water in the solar panel
- Hot water \_\_\_\_\_ to the top of the tank
- Cold water \_\_\_\_\_ the bottom of the tank
- Hot water \_\_\_\_\_ this system.



2. Label and Complete the description of this system. Use the preposition of movement.

TO – FROM – AROUND – INTO –  
OUT OF – THROUGH –

The main parts of this system are a tower, an air inlet, a solar chimney, a pump, an air vent and a pipe with holes at the top.

The pump pushes the cold water \_\_\_\_\_ the water tank, \_\_\_\_\_ the top of the tower. **Here**, the water leaves the pipe through small holes, it's like a cold shower.

Hot air enters the tower \_\_\_\_\_ the

air inlet and the shower of cold water cools it.

The cold air sinks to the bottom of the tower. Then **it** enters the house through the air vent and flows \_\_\_\_\_ the house, cooling it. The hot air rises and flows \_\_\_\_\_ the chimney.

The sun heats the thermal wall, and the hot air goes \_\_\_\_\_ the house.

3. What does the words refer to?

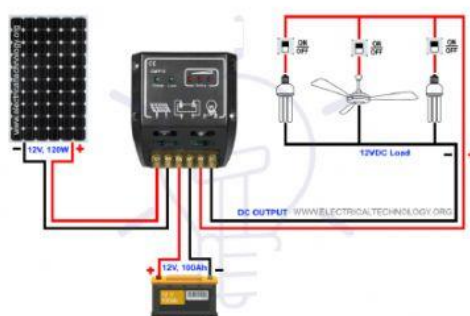
**Here****a) The cold water tank****b) The top of the tower****c) The bottom of the tower****It****a) The air****b) The house****c) The tower**

4. Name the main parts of the electrical system.

5. Where does the current flow in this situation?

**situation:** The sun shines and the lamps are on

- Draw the arrows
- Describe the situation using the conditional zero



Grade: \_\_\_\_\_

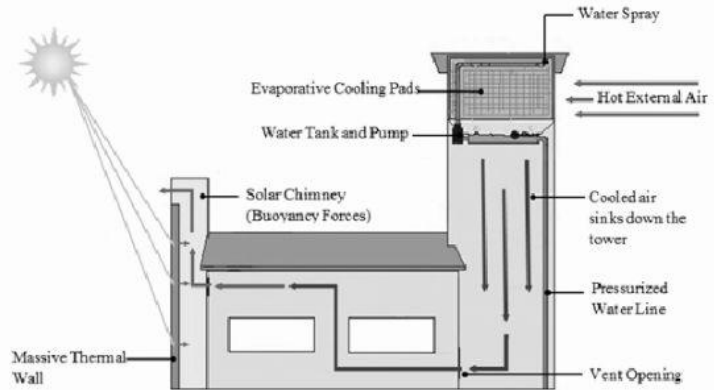
Name: \_\_\_\_\_

Date: \_\_\_\_\_

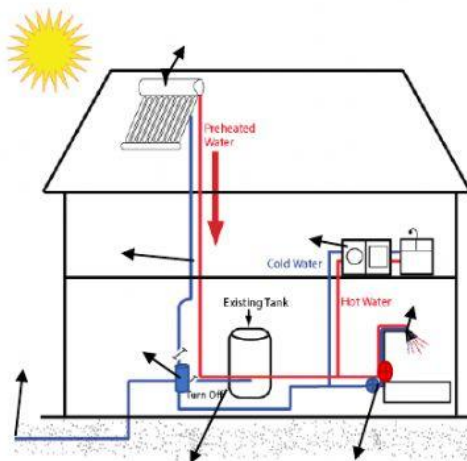
1. Complete the sentences using the correct form of the verbs in the box.

- Cold water \_\_\_\_\_ to the top of the tower
- The cold water \_\_\_\_\_ the pipe through small holes like a shower.
- Hot air \_\_\_\_\_ the tower through the inlet.
- The cold water \_\_\_\_\_ the air
- The cold air \_\_\_\_\_ to the bottom of the tower.
- Cold air \_\_\_\_\_ into the house.
- The cold air \_\_\_\_\_ around the house.
- The sun's rays \_\_\_\_\_ the Thermal wall in the chimney.
- The air \_\_\_\_\_ the house through the chimney

Leave - Rise - Enter - Flow - Go - Heat - Sink - Cool - Leave



- Label complete the description of this system. Use the preposition of movement.  
TO - FROM - AROUND - INTO - OUT OF - THROUGH -



The main parts of this system are a solar panel, a pump, cold water inlet, a water tank, pipes and outlets (a shower head, a sink, a washing machine, a dishwasher).

The cold water enters the system \_\_\_\_\_ the inlet and then it flows \_\_\_\_\_ the tank.

The pump pushes the cold water \_\_\_\_\_ the water tank, \_\_\_\_\_ the Solar panel. **Here**, the water moves \_\_\_\_\_ while the sun heats **it**. Then, hot water leaves the solar panel and enters the water tank.

In the water tank, hot water rises to the top and cold water sinks to the bottom.

When you open the valves hot water and cold water flows \_\_\_\_\_ the system through the different outlets

- What does the words refer to?

Here

a) The tank

b) The solar panel

c) The water

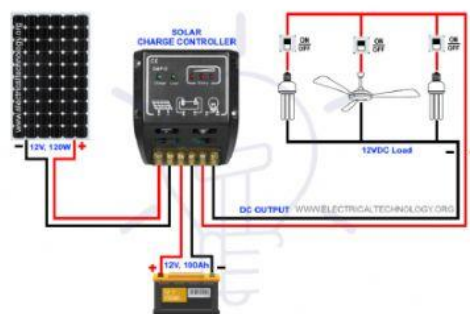
It

a) The water

b) The tank

c) The sun

- Name the main parts of the electrical system.
- Describe the following situation using the conditional zero.
  - The sun doesn't shine and the lamps are on.
  - Where does the current flow in this situation? Draw the arrows



Grade: \_\_\_\_\_

Name: \_\_\_\_\_