

opposite



next to



between



Opposite, next to, and between are prepositions of place. We use prepositions of place to say where something is.

*My house is **opposite** the hospital.*

*Where's the movie theater? It's **between** the bookstore and the bank.*

1 Circle.



1 opposite / next to



2 between / opposite



3 next to / between

2 Write.

opposite ~~next to~~ between



1 The girl is sitting next to her mom.

2 The girl is sitting _____ her mom and her dad.

3 The girl's dad is sitting _____ her mom.

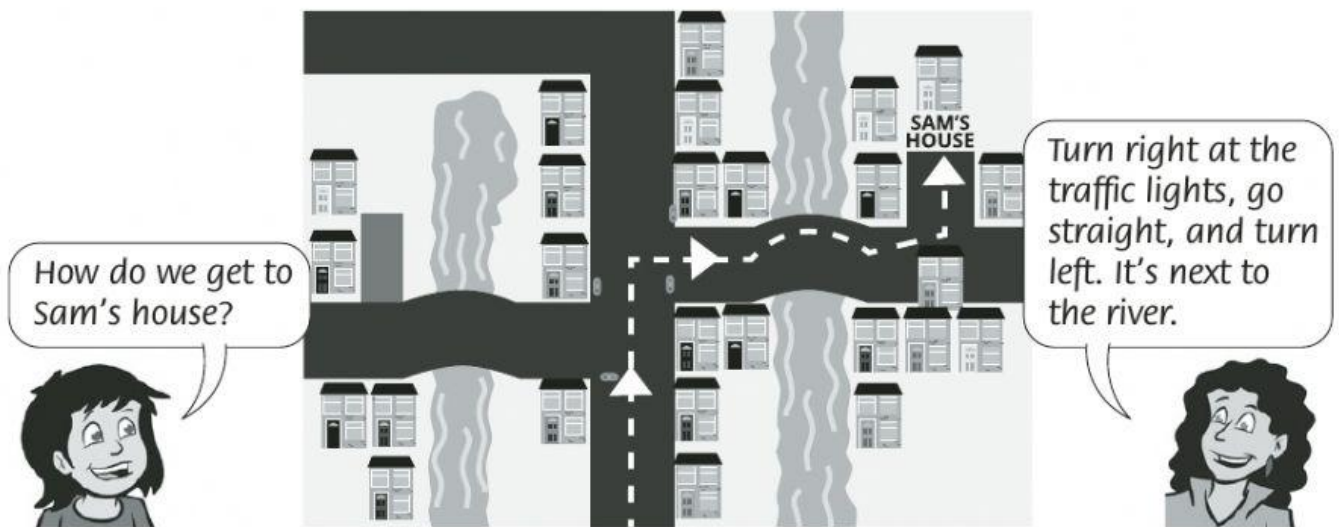
3 Look and write sentences.



- 1 park / train station The park is opposite the train station.
- 2 airport / bank _____
- 3 museum / police station _____
- 4 supermarket / bookstore _____
- 5 bank / airport and hospital _____
- 6 supermarket / police station _____

4 Write about you and your classroom. You can use some or all of the words from Exercise 2.

- 1 The teacher is _____ the board.
- 2 I'm _____ my friend.
- 3 I'm _____ the board.
- 4 I'm _____ the window.
- 5 The door is _____ the window.
- 6 _____ is between _____ and _____.



Turn right is an imperative. We use imperatives to tell somebody what to do. The imperative form is the same as the base form of the verb.

Turn left at the traffic lights.

Go straight.

To ask for directions, we say **How do I / we get to ...?**

How do I get to the movie theater?

Go straight and turn right. It's opposite the library.

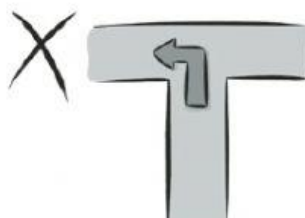
don't turn right = negative imperative



5 Circle.



- 1 turn right /
turn left /
go straight

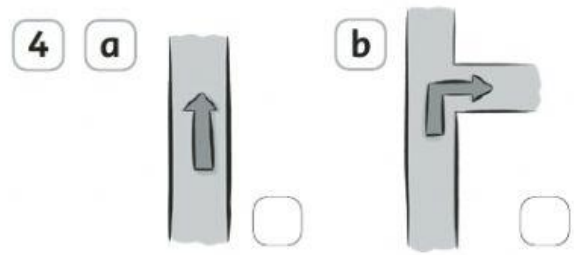
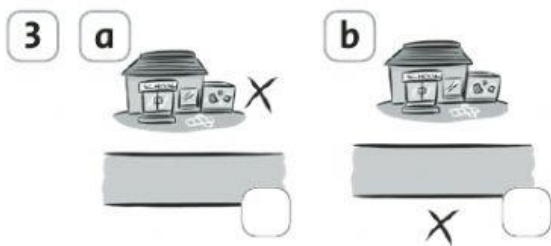
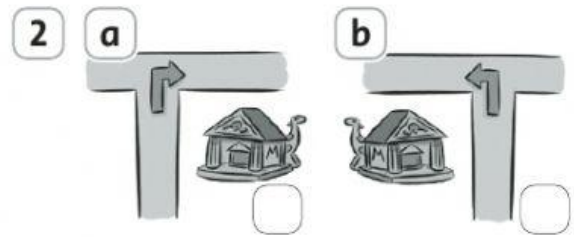
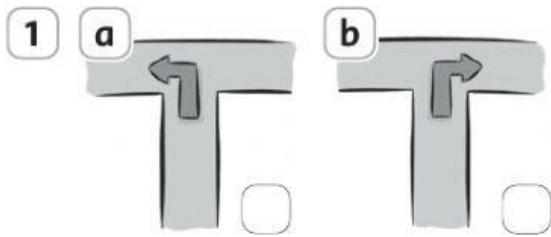


- 2 turn right /
turn left /
go straight



- 3 turn right /
turn left /
go straight

6 Listen and choose *a* or *b*. 05



7 Look at the map. Write.

right left straight

- 1 We are at the bookstore.
How do we get to the police station?
Go straight to the park. Turn right at the park.
Turn left at the train station and then turn right. Go straight.
The police station is on the left.



- 2 We are at the supermarket. How do we get to the park?
Go _____. Turn _____ at the train station.
The park is on the _____.
- 3 We are at the park. How do we get to the museum?
Turn _____. Go _____. You can see the train station on the _____. Turn _____.
Go _____. Turn _____. The museum is on the _____.

1 Write.

- 1 How / we / get / police station?

How do we get to the police station?

- 2 police station / next to / park

- 3 Turn left / traffic lights

- 4 police station / opposite / supermarket

2 Write directions to these places for a new student in your class. Start from where you are now.

- 1 Art room

- 2 Schoolyard

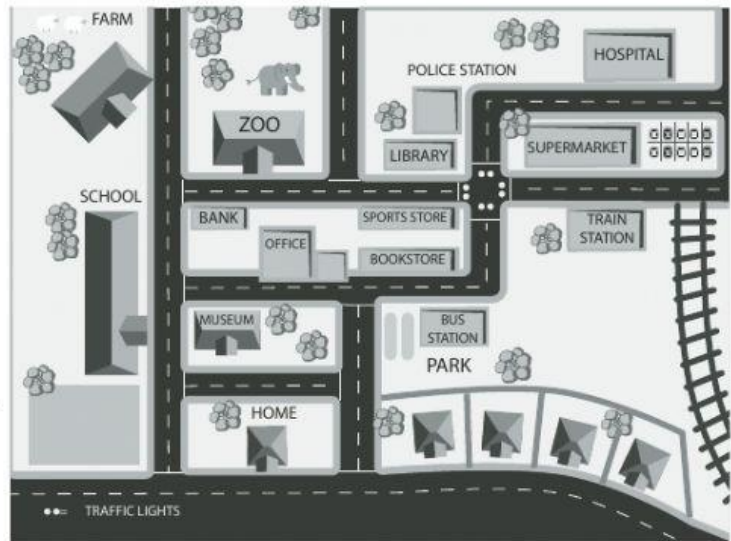
- 3 Computer room

1 Start at home. Read the directions. Write the names of the places.

- 1 Go right. Turn left and go straight. Turn right. It's on the right.

bus station

- 2 From where you are, go right and then turn left. Turn left at the traffic lights. It's on the left.



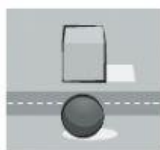
- 3 From where you are, go right. Go straight at the traffic lights. It's on the right. _____
- 4 From where you are, go left. Go straight at the traffic lights. Turn left at the end of the street. It's on the right. _____

2 Draw a map to help a new friend find a park (or another place) near your school.

How we get to the _____.

1 Write.

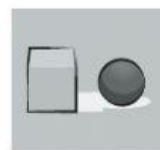
/ 8



1 opposite



2



3



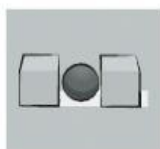
4



5



6



7



8



9

2 Match.

/ 4

1 turn

2 traffic

3 turn

4 next to

5 go

a straight

b the police station

c lights

d right

e left

3 Write the words in the correct order.

/ 3

1 the It's park opposite

It's opposite the park.

2 straight on the Go left and it's

3 get we How do the train station to ?

4 traffic at lights right Turn the

/ 15