The background of the entire page is a close-up photograph of numerous small, white, cube-shaped alphabet blocks. Each block has a different colored letter on its top face, including green, blue, orange, yellow, pink, and purple. The blocks are scattered across the surface, some overlapping each other.

# Hortatory Exposition

Class:

Date:

Group Members:

Kelas XI Peminatan

# CATEGORIZE!

Study the following sentences and categorize them into:

Simple Present Cense

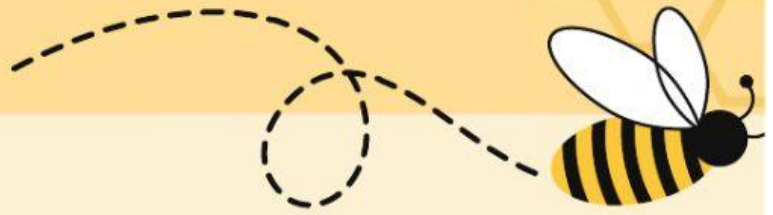
Conditional Type 1

Modals

1. Schools should start later in the morning
2. Students can get full of recommended sleep hours
3. Individuals will be living without taking care of their health if complementary health services are always available
4. Government spends money on more important matter
5. Students need better energy to concentrate.
6. Healthcare should not be free.
7. If school started later, students will be more focused and concentrated.
8. Students need to use their brain during the school time, especially when wrting and reading.

# READING COMPREHENSION

*Read the story below and then answer the comprehension questions on the next page.*



Have you ever been exhausted on a Monday morning and feel like you needed more sleep? Students need to be well-rested and ready for a long day of learning. School should start later in the morning so students can get a full recommended nine and a half hours of sleep.

First, Students will be more attentive which will help them learn, and teachers will also be more awake and in better moods. Schools should start later in the morning in order for students to have better concentration, energy, and attitudes. Students need a lot of concentration to work hard. When they are tired and drowsy, they are unable to think well. Also,

Second, students need to use their brain when they are writing papers or making speeches. If they forgo sleep, they will have many mistakes and will not be able to perform well. Let say, if it is the first class of the day, students may be falling asleep or not listening to the important lesson of their class.

In conclusion, schools should start later for students so that they are ready, more focused and be positive towards the lessons the whole day.

CLICK THE FLOWER --->

