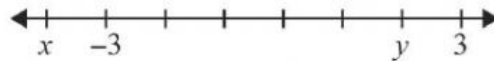


# SECTION A/ BAHAGIAN A

1. Arrange  $-14, 12, 85, 0, -2$  in ascending order.

A.  $0, -2, 12, -14, 85$       B.  $-2, -14, 0, 12, 85$   
 C.  $-14, -2, 0, 12, 85$       D.  $85, 12, 0, -2, -14$

2. Diagram shows a number line.



Find the value of  $x$  and  $y$  ?

A.  $x = -4; y = 1$     B.  $x = -4; y = 2$   
 C.  $x = -2; y = 1$     D.  $x = -2; y = 2$

3. Table shows the number of students in three form 1 classes.

Form <i>Tingkatan</i>	1 Amanah	1 Barakah	1 Fathanah
Number of Students <i>Bilangan Murid</i>	30	35	15

Which of the following is the ratio of the number of students in 1 Amanah to 1 Barakah to 1 Fathanah?

A.  $6 : 7 : 3$       B.  $3 : 6 : 7$   
 C.  $15 : 30 : 35$       D.  $30 : 15 : 35$

4. Determine the prime factors of 42.

A. 1, 3, 7    B. 1, 3, 21  
 C. 2, 3, 7D. 2, 3, 7, 21

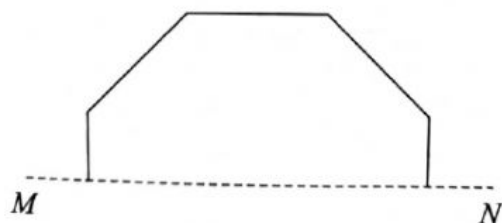
5. Which of the following is equivalent to the term  $3k^2mn$ ?

A.  $3k^2 + mn$       B.  $3k^2 \times mn$   
 C.  $-3k^2 \times mn$       D.  $3k^2 - mn$

6. Given  $\frac{x+8}{2} = 9$ , find the value of  $x$ .

A. 2    B. 3  
 C. 10 D. 26

7. Diagram shows a part of a regular polygon with MN as its axis of symmetry.



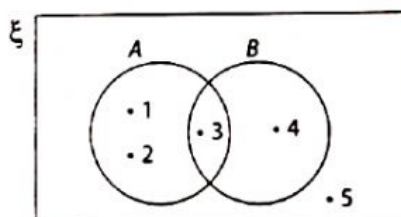
State the name of the above polygon.

- A. Pentagon                      B. Hexagon  
C. Heptagon                    D. Octagon
8. Calculate the distance between the point  $A(2, -1)$  and  $B(5, -5)$ .
- A. 5                                  B. 7  
C. 10.                               D. 13

9. Table shows the number of ferry passengers at Pulau Pangkor jetty in March. Calculate the median.

Number of passengers <i>Bilangan penumpang</i>	10	20	30	40
Frequency <i>Kekerapan</i>	5	8	7	10

- A.20                                  B. 25  
C. 30                                  D. 35
10. Expand  $4(x-5)$
- A.  $x - 5$                               B.  $4x - 1$   
C.  $4x - 1$                               D.  $4x - 20$
11. Describe the patterns of the number sequence of 15, 28, 41, 54 and 67.
- A.Begin with 15 and add 3 to each term.  
B.Begin with 15 and add 13 to each term.  
C.Begin with 15 and add 15 to each term.  
D.Begin with 13 and add 15 to each term.
12. Diagram shows a Venn diagram.



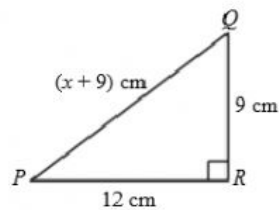
List the elements for  $A'$ .

- A. 3, 4      B. 5  
C. 3, 4, 5      D. 4, 5

13. Round off 0.004055 to 3 significant figure.

- A. 0.004      B. 0.0040  
C. 0.00405      D. 0.00406

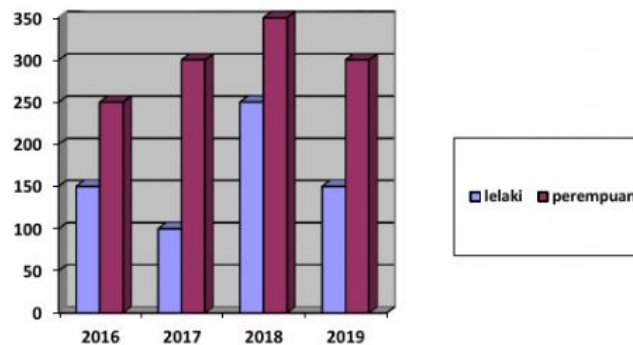
14. The diagram below shows a right-angled triangle PQR.



Find the value of  $x$ .

- A. 6      B. 18      C. 36      D. 72

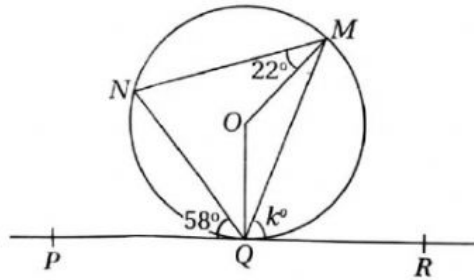
15. Diagram shows a bar chart which shows the number of students in SMK Aman who scored an A in Mathematics examination for four consecutive years.



Find the difference between the total number of boys and girls.

- A. 550      B. 650  
C. 1200      D. 1850

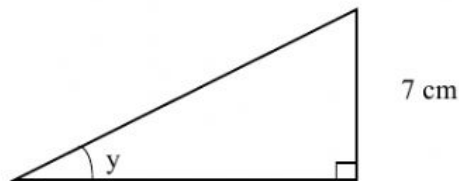
18. In the following diagram, PQR is tangent to the circle MNQ at Q. O is centre of the circle.



Find the value of  $k$ ,

- A. 36      B. 54      C. 58      D. 72

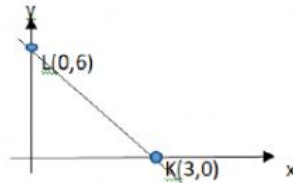
19. Diagram shows a right-angled triangle.



Given  $\tan y = \frac{7}{24}$ , find the value of  $\sin y$ .

- A.  $\frac{24}{25}$       B.  $\frac{23}{25}$       C.  $\frac{7}{23}$       D.  $\frac{7}{25}$

20. Diagram a straight line KL.



Which of the following equations represents the graph above

- A  $y = 6 - 2x$   
 B  $y = 2 - 6x$   
 C  $y = 18 - 2x$   
 D  $y = 18 - 6x$