



## L.N Coakley Science Department

### Skeletal System Unit Quiz

Name: \_\_\_\_\_

Date: \_\_\_\_\_

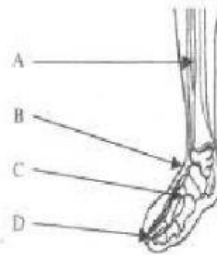
Grade: \_\_\_\_\_

Instruction: Answer all questions.

#### Section A

Instruction: **Circle the correct letter for your answer to each question.**

1. The diagram below shows bones found in the foot. Which letter points to the phalanges?



2. Which row in the table gives correct information about the human skeleton?

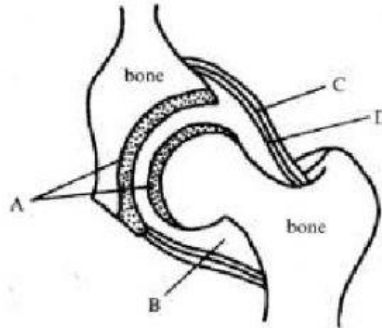
	BONE	DESCRIPTION
A	Cranium	Found between the shoulder and elbow
B	Femur	Longest bone in the skeleton
C	Humerus	Protects the brain
D	Pelvis	Helps us to breathe in and out

3. Which row in this table gives the correct information about the number of bones in the human body?

	Total Number of Ribs Bones	Total Number of Humerus Bones	Total Number of Patella Bones	Total Number of Femur Bones
A	12	1	2	4
B	24	2	2	2
C	30	4	1	2
D	36	3	4	3



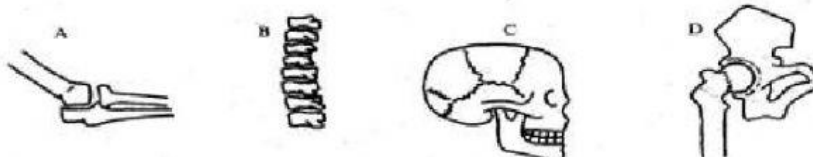
4. The diagram below represents a joint. Which letter is pointing to cartilage?



5. What is the function of synovial fluid?
- To cushion the fetus in the womb
  - To lubricate joints in the skeleton
  - To moisten the eyeball in the socket
  - To protect the brain in the cranium
6. John was playing football and he sprained his ankle. Which structures in his ankle did he injure?
- Bones
  - Ligaments
  - Muscles
  - Tendons
7. Which bone is the strongest and longest bone in the body?
- Humerus
  - Femur
  - Tibia
  - Vertebral column
8. Match the scientific name of the bones below with their common name.

	SCIENTIFIC NAME OF BONE	COMMON NAME OF BONE
A	Clavicle	Collarbone
B	Tarsal	Thigh Bone
C	Patella	Fingers
D	Pelvis	Breast Bone

9. Which of the following joints below is an example of a fixed joint?

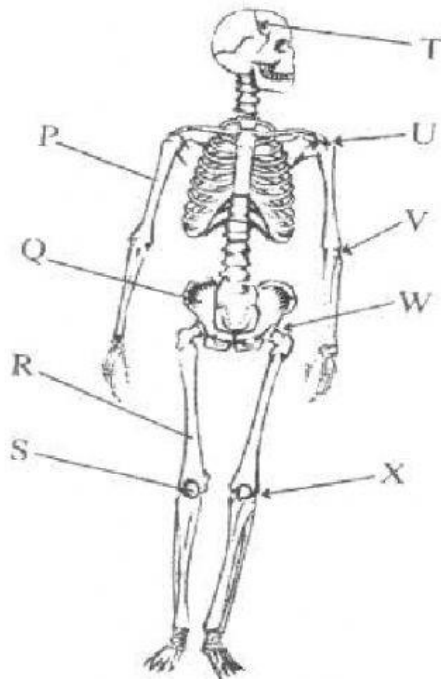




### Section B –Structured Questions

**Instructions:** Answer all questions in the spaces provided. The marks allotted for each question is indicated in brackets.

1. The diagram below represents the human skeletal system.



- (a) Write the name of the bones labeled P, Q, R and S. Use the scientific name only.

P \_\_\_\_\_  
Q \_\_\_\_\_  
R \_\_\_\_\_  
S \_\_\_\_\_

- (b) What is the total number of bones that make up the skeletal system?

\_\_\_\_\_

- (c) What is the function of the part labeled T?

\_\_\_\_\_

- (d) Draw a line label Y on the part of the skeleton that protects the heart.

- (e) The letters V and W points to joints.

- (i) Define the term joint \_\_\_\_\_

\_\_\_\_\_

- (ii) Identify Joint V \_\_\_\_\_

Joint W \_\_\_\_\_

- (f) List three functions of the skeleton.

\_\_\_\_\_

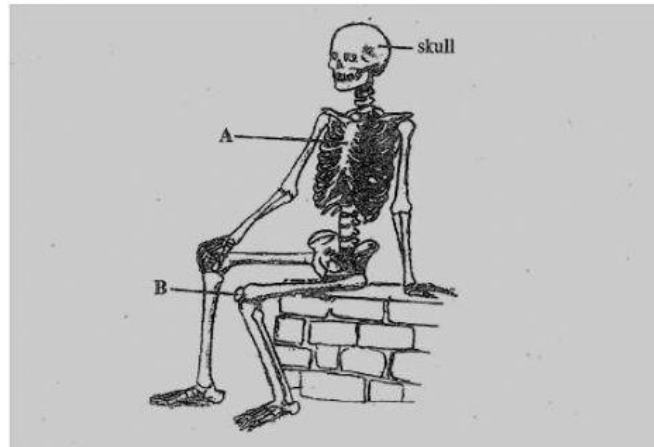
\_\_\_\_\_

\_\_\_\_\_





2. The diagram below shows a human skeleton.



- (a) Give the scientific name of the bones labelled **A** and **B**.

A \_\_\_\_\_

B \_\_\_\_\_

- (b) The human skeleton serves as a protection for delicate organs. Complete the table below with the correct word.

	Skeleton Part	Organ (s) Protected
1	Skull	
2		Spinal Cord
3	Rib Cage	

- (c) On the diagram, draw a line to a ball-and-socket joint and label it "Q".

- (d) (i) What is the name of the type of muscles attached to the skeleton?

(ii) \_\_\_\_\_  
Name the structure that attaches this type of muscle to the skeleton.

- (e) Sometimes injuries happen to the bones of the skeleton. One such injury is a **fracture**.

Explain what a fracture is.

\_\_\_\_\_

- (f) Name **ONE** mineral needed in the diet to develop strong healthy bones.

\_\_\_\_\_