

The Musical Alphabet II

You know that musical notation uses the first 7 letters of the alphabet **A B C D E F G**.

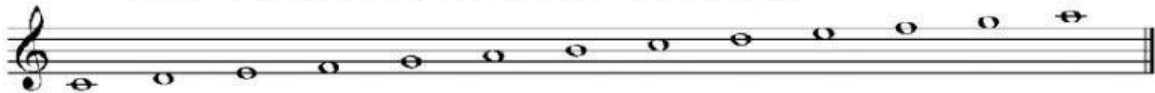
The two phrases that can help me are:

Lines -

Spaces -

Sometimes musical notes are lower than the bottom line and higher than the top line of the staff. These are called **ledger** notes and we need to add extra lines to them.

Name the notes in the music scale below:



EXERCISE: Write the name of each note on the line underneath.

