

Natural Sciences

1. Fill in the titles and draw lines to the parts. Then complete the sentences.

A _____ cell

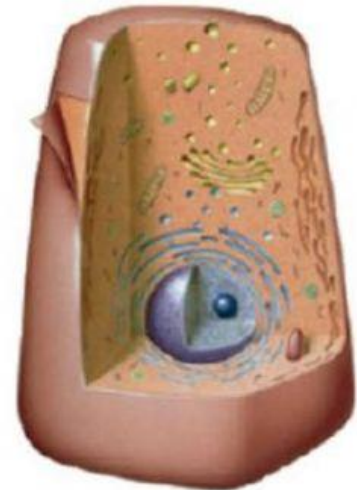
An _____ cell



Cytoplasm

Nucleus

Cell wall/membrane



All animal and plant cells have three basic parts: the _____, the _____ and the organelles. In plant cells there is also a _____ outside the membrane.

2. Match the groups of living things with the definition.

a) Animals	1. They can inhabit both fresh and salt water. They can be microscopic or measure many meters long.
b) Plants	2. They do not make their own food. They live everywhere (in air, in water, in soil, on plants, on animals). They can't move about.
c) Algae	3. They can move about. They can't produce their own food. They have to eat other living thing organism.
d) Fungi	4. They use the energy from the Sun, water and minerals from the soil and carbon dioxide from the air to produce their own food. They can't move about.
e) Bacteria	5. They are the simplest of creatures that are considered alive. They are everywhere. They are in the bread you eat, the soil that plants grow in, and even inside of you.

Natural Sciences

CHOOSE THE CORRECT OPTION (algae, plants or both).

- a) They make their own food. **ALGAE / PLANT / BOTH**
- b) They cannot move about. **ALGAE / PLANT / BOTH**
- c) They don't have stems. **ALGAE / PLANT / BOTH**
- d) Most of them can be seen with the naked eye. **ALGAE / PLANT / BOTH**
- e) They don't have leaves. **ALGAE / PLANT / BOTH**
- f) They only live in water. **ALGAE / PLANT / BOTH**
- g) They don't have roots. **ALGAE / PLANT / BOTH**



Match the picture or the sentence with the correct type of fungi.



* These grow on some types of decaying food. ☐

MUSHROOM



* Many of them have an umbrella shape. ☐

YEAST



* These can only be seen with a microscope. ☐

MOULDS