



PART 4 - COLLOCATIONS

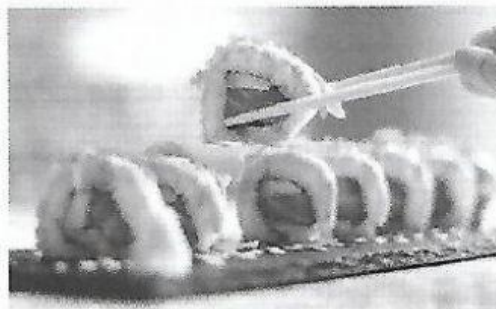
EXAM TIP!

- Skim the text to find out the topic and general meaning.
- Work out the questions by reading the whole sentences. Do not stop reading after the gaps.
- Make your choice, look at the other two options and think why they are wrong.
- Finally, rread the whole text again to make sure it makes sense.



Art you can eat

Yujia Hu was born in China, but moved to Milan, in Italy, when he was eight. His family have a Japanese restaurant there. When Yujia left school, he (19) a course at an art school, but he didn't complete it. (20), he went to work in the family restaurant as a sushi chef. Sushi is a Japanese dish made of rice, with fish and vegetables.



Yujia is a big (21) of basketball, and a few years ago he (22) to start using sushi to make models of the faces of famous players. His next idea was to make little shoes, usually trainers, out of sushi. It (23) him about 30 minutes to make each shoe. Yujia doesn't serve the sushi shoes to customers at his family's restaurant, but he (24) photographs of them online.

- | | | | |
|----|-------------|---------------|------------|
| 19 | A- got | B- held | C- began |
| 20 | A- Instead | B- Really | C- Maybe |
| 21 | A- partner | B- fan | C- member |
| 22 | A- believed | B- understood | C- decided |
| 23 | A- spends | B- takes | C- delays |
| 24 | A- sends | B- shares | C- joins |