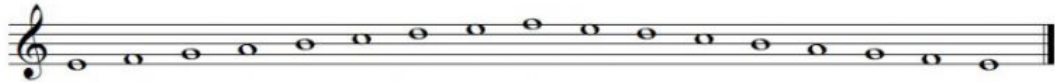
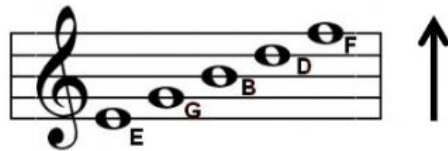


# The Musical Alphabet

Musical notation uses the first 7 letters of the alphabet **A B C D E F G**. the notes move up and down the stave in steps like this:



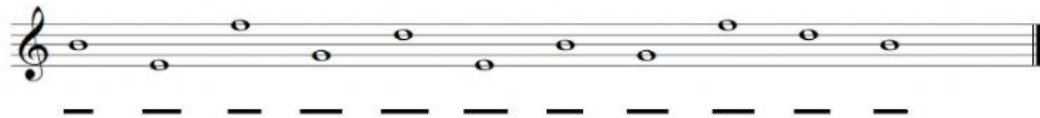
First let's look at the names of the notes on the lines:



A useful phrase for remembering the names of the notes is:

Every **G**ood **B**oy **D**eserves **F**ootball

Now try to name these notes:



As well as 5 lines there are also 4 spaces on the stave, these spell out the word **F A C E**



Always read from the bottom upwards – like climbing a ladder

Now try to name these notes:

