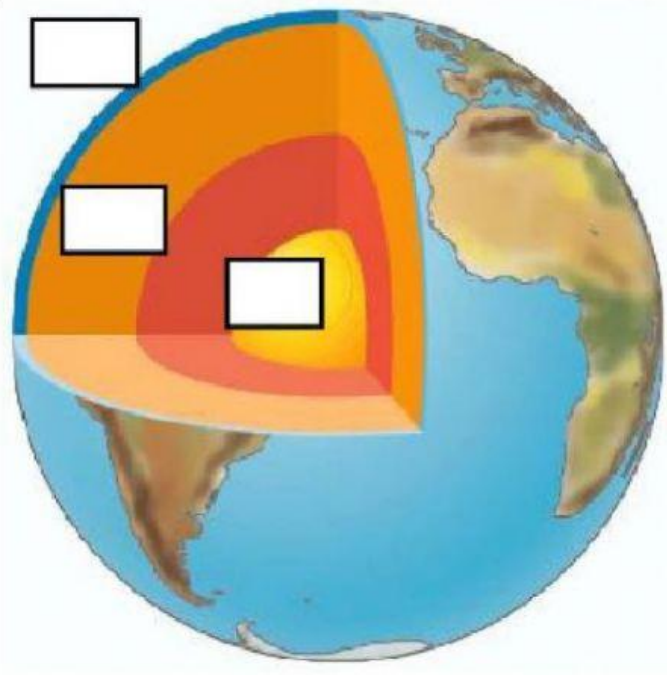


1. Match the words with the picture
The Geosphere

CORE

CRUST

MANTLE



2. Minerals have different properties. Put the definitions in the correct place.

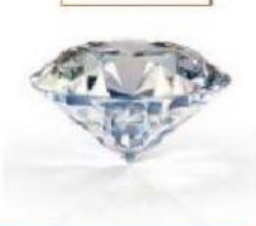
colour



[Empty box]

Resistance to being scratched

hardness



[Empty box]

That mineral is yellow

lustre



[Empty box]

The shape. For example, this mineral is cubic.

shape



[Empty box]

How the surface reflects light

3. Match the words with the correct sentence.

- hard
- talc
- scratch
- diamond
- weigh

- The softest minerals are easy to []
- If the surface is difficult to scratch, the mineral is []
- [] is the softest mineral.
- [] is the hardest mineral.
- Minerals that contain metals [] more.

4 Listen and complete. Drag the correct answers

	shape	lustre	colour	streak	hardness
diamond					
quartz					
turquoise					
pyrite					

- | | | | | |
|--------------|--------------|-------------|----------------|---------|
| crystal | glassy | transparent | greenish black | white |
| crystal | metallic | irregular | dark yellow | crystal |
| opaque | blue-green | 6 | 7 | white |
| many colours | bluish white | 5-6 | 10 | glassy |