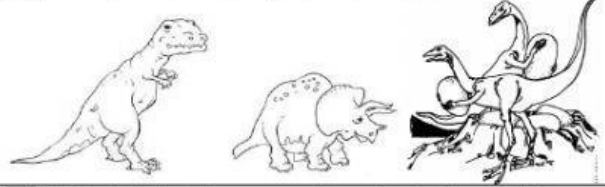


☐ Nel mare appaiono gli **invertebrati**.



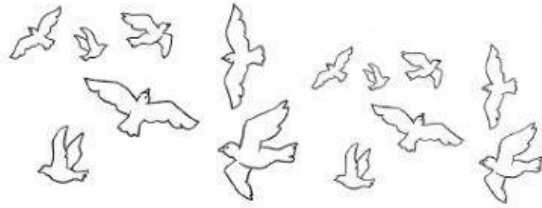
☐ Fanno la loro comparsa i **dinosauri**.



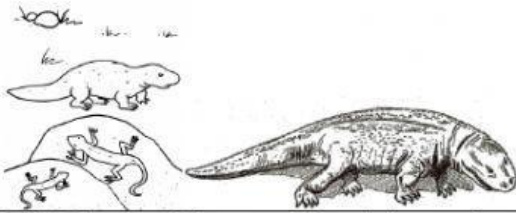
☐ Le **piante** invadono la Terra formando vaste foreste e fanno la loro comparsa gli **insetti**.



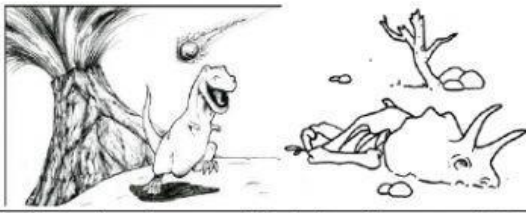
☐ Nel cielo iniziano a volare i primi **uccelli**.



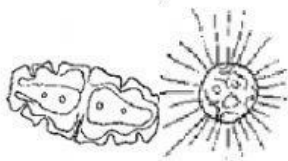
☐ Gli anfibi si trasformano in **rettili**.



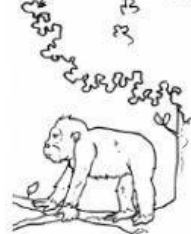
☐ I dinosauri misteriosamente si estinguono.



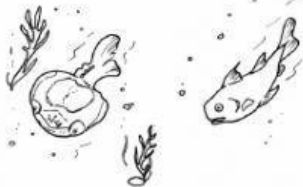
☐ Nel mare si formano i primi **esseri unicellulari**, formati cioè da una sola cellula.



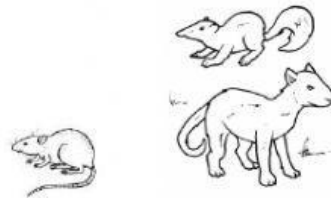
☐ Tra i vari mammiferi si sviluppano i **PRIMATI**.



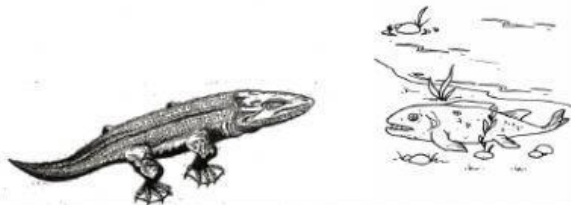
☐ Nel mare compaiono i primi **vertebrati**: i **pesci**.



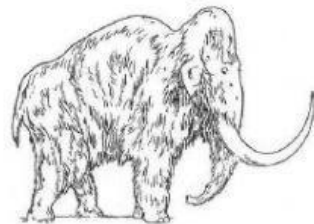
☐ Compaiono i **piccoli mammiferi** e le **piante con i fiori**.



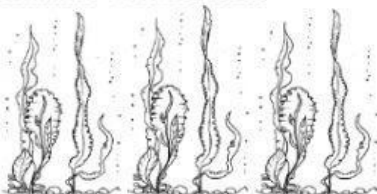
☐ Gli **anfibi** fanno la loro comparsa sulla terraferma.



☐ I **mammiferi** diventano i **padroni della Terra**.



☐ Le alghe producono l'ossigeno che passa nell'aria formando l'**atmosfera**.



☐ Dai Primati hanno origine gli **OMINIDI**.

