

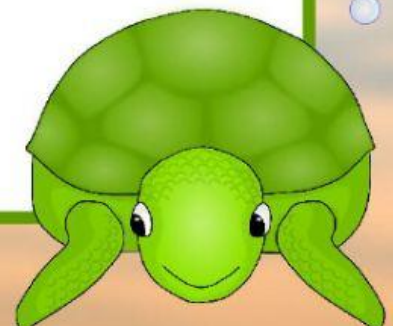
The Water Bodies on Earth

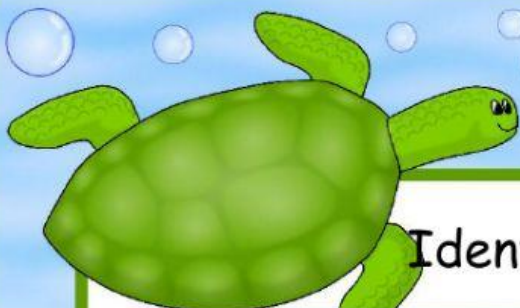
Oceans cover more than

- a) 17% of the Earth's surface.
- b) 70% of the Earth's surface.
- c) 60% of the Earth's surface.

How many oceans are there?

- a) 4
- b) 5
- c) 6





Identify the oceans on the map.



Arctic Ocean

Pacific Ocean

Indian Ocean

Atlantic Ocean

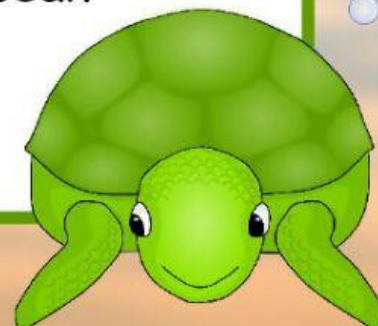
Antarctic Ocean

Which is the largest ocean?

a) Indian b) Pacific c) Atlantic

The Mediterranean Sea is part of the

a) Indian Ocean b) Pacific Ocean
c) Atlantic Ocean

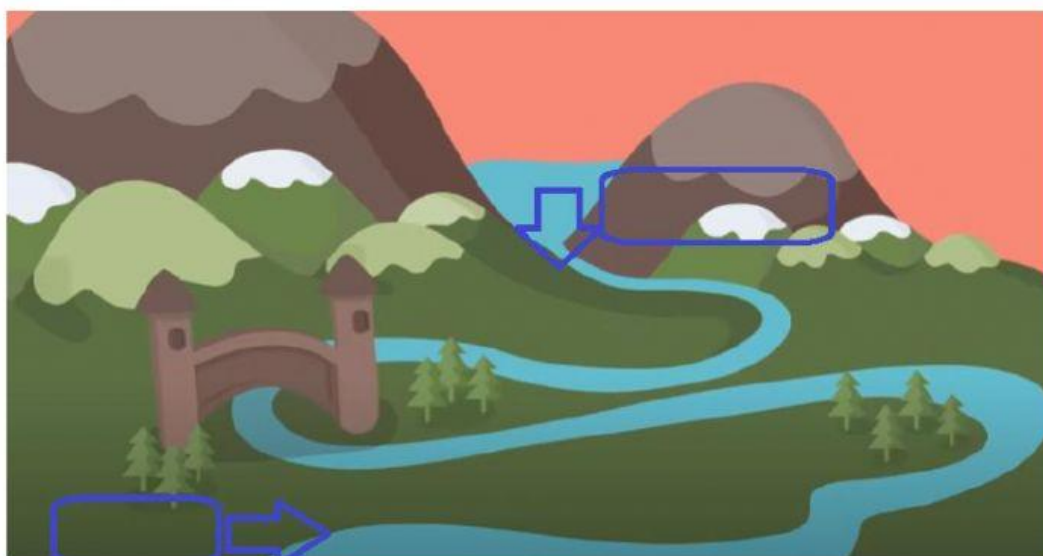




Where do rivers begin?

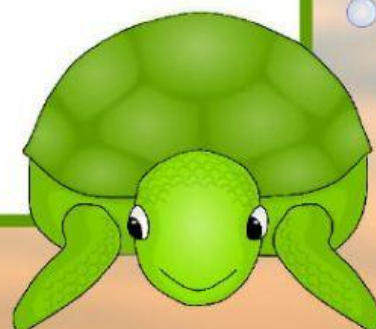
- a) They begin in mountains.
- b) They begin in mountains and hills.
- c) They begin in the ocean.

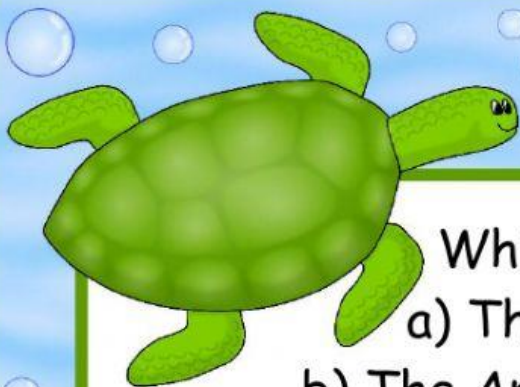
Look at this river. Where the rivers begins it is called the _____ and where it ends, it is called the _____.



mouth

source





Which is the longest river?

- a) The Nile River is the longest.
- b) The Amazon River is the longest.
- c) The Thames River is the longest.

Lakes are formed when waters finds its way into a basin through:

- a) rain
- b) underground water
- c) both of them
- c) none of them

TRIVIA TIME

The Dead Sea is a

- a) lake
- b) river
- c) ocean

Why is it called "The Dead Sea"?

- a) Because it is very salty.
- b) Because no living thing can survive.
- c) Because it is very salty and no living thing can survive.

<https://www.youtube.com/watch?v=bNWuQD7QHBc&t=66s>

