

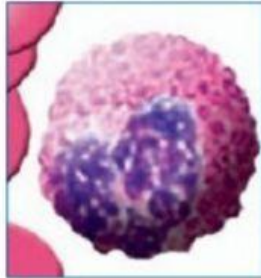
Leucocytes (white blood cells)

(have granular cytoplasm and lobed nuclei)

(have clear cytoplasm and their nuclei are not lobed)



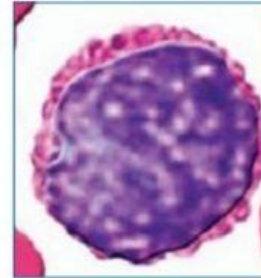
Phagocytic granulocytes that engulf and digest bacteria and dead cells



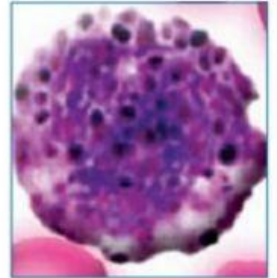
Release enzymes to fight inflammation in allergic reactions; also kill parasitic worms



- Involved in combating inflammatory and allergic reactions
- Secrete heparin to prevent blood from clotting



Produce the immune response against foreign substances



Engulf and digest bacteria and dead cells

Agranulocytes

Granulocytes

Eosinophils

Lymphocytes

Basophils

Monocytes

Neutrophils