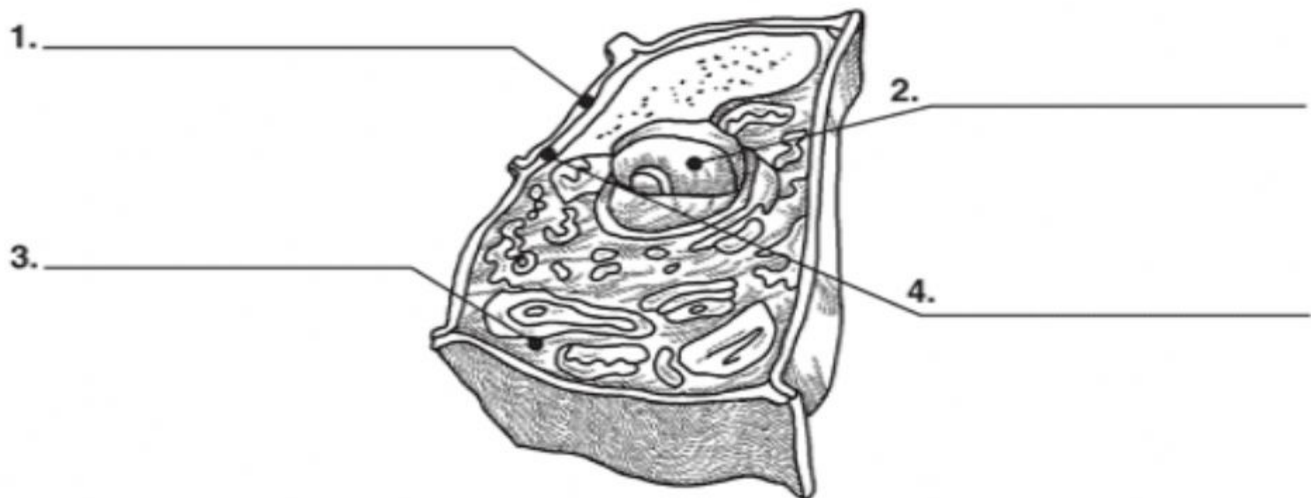


## HOW ARE LIVING THINGS ORGANIZED?

**Main Idea** All living things are made of cells and are able to carry out life processes.

**Label the parts of the plant cell on the diagram below.**



**Circle the letter that best answers the question or completes the sentence.**

5. Which could be a simple organism?
- |                |                  |
|----------------|------------------|
| A. single cell | C. organ systems |
| B. tissue      | D. organs        |
6. Tissue consists of many
- |                      |                   |
|----------------------|-------------------|
| A. kinds of organs.  | C. similar cells. |
| B. simple organisms. | D. organ systems. |
7. Both simple organisms and complex organisms
- |                               |                            |
|-------------------------------|----------------------------|
| A. are single-celled animals. | C. consist of organs.      |
| B. have tissue.               | D. perform life processes. |
8. Complex organisms are made of cells, tissue, organs, and
- |                   |                    |
|-------------------|--------------------|
| A. organ systems. | C. life processes. |
| B. volvox.        | D. algae.          |
-