

REVISION OF TOPICS

Characteristics of Living Things

Choose the characteristic which is being described below.

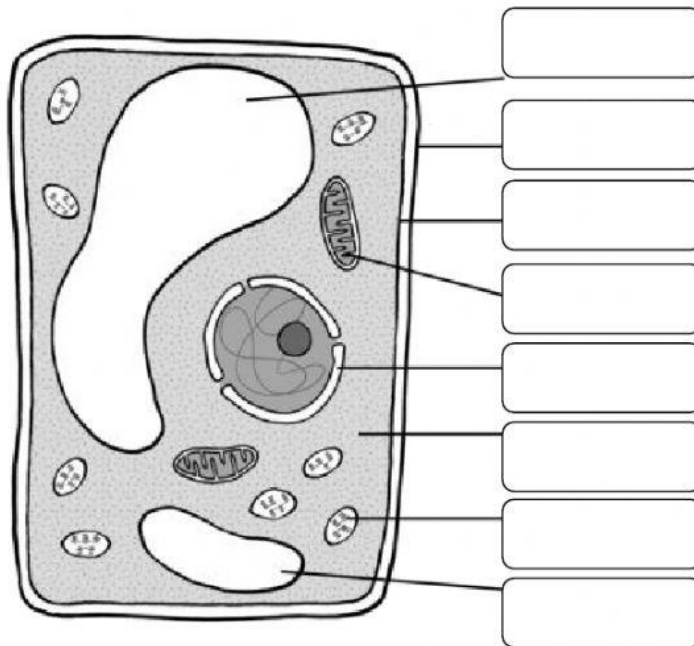
1. Tom's height has increased from 5 feet 4 inches to 6 feet.
2. Green plants produce their food through photosynthesis.
3. The roots of a plant grow towards ground water.
4. An adult hydra produces offspring through budding
5. A tulip opens in the morning and closes at sunset.
6. An athlete takes in large amounts of oxygen while running.
7. The dog urinates on the tree to mark its territory.

CELLS

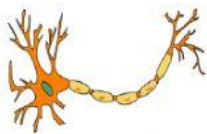
Match the part of the cell to its function

Nucleus	stores food, water or cell sap
Cell Wall	makes proteins
Cytoplasm	is the genetic material/DNA
Chloroplast	controls what enters and leaves the cell
Cell membrane	controls all processes in the cell
Chromosome	contains the chlorophyll
Mitochondria	gives the cell its shape
Vacuole	provides the cell with energy
Ribosome	jellylike substance where all chemical reactions take place

Label the plant cell below. Write using lowercase letters

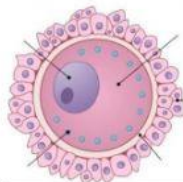


Name the specialized cells shown in the pictures below.

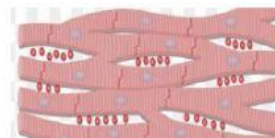












SPERM CELL

EGG CELL

MUSCLE CELL

**EPITHELIAL
CELL**

NERVE CELL

**RED BLOOD
CELL**

Choose the specialized cell which is being described below.

1. Has no nucleus and transports oxygen
2. Has a lot of mitochondria and can contract and relax.
3. Has a flagellum which is important for swimming.
4. Helps our body to fight against diseases
5. Contains half the DNA of the female.
6. Carries messages through electrical impulses.
7. Is important for lining our organs and creating a barrier for protection

ORGANIZATION IN THE BODY

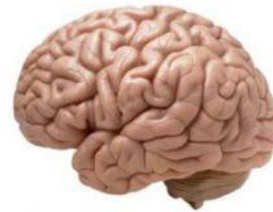
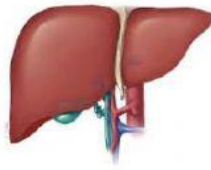
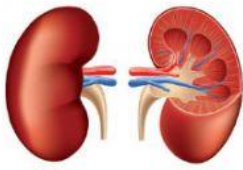
PUT THE BOXES IN THE CORRECT ORDER.



TRUE/FALSE

1. The body is made of one type of tissue.
2. Similar cells with the same function join together to form tissues.
3. Bones, blood and cartilage are examples of connective tissue.
4. Cardiac muscle tissue can be found in the legs.
5. The skin and intestines contain epithelial tissue.
6. Nervous tissue can be found in the brain and the spinal cord.

Name the organs shown below. Type all words in lowercase



Choose the name of the system that the parts of the body belong to:

1. lungs, trachea, nose
2. heart, blood vessels, blood
3. mouth, stomach, intestines,
4. brain, spinal cord, nerves
5. kidneys, bladder, urethra
6. uterus, fallopian tubes, ovary
7. hormones, testicles, adrenal gland
8. hamstring, biceps, triceps