

# EXAM: UNIT 1

NAME: \_\_\_\_\_

NATURAL SCIENCE

DATE: \_\_\_\_\_

TOTAL SCORE: \_\_\_\_\_ / 50

## 1. Select the correct words. (5 points)

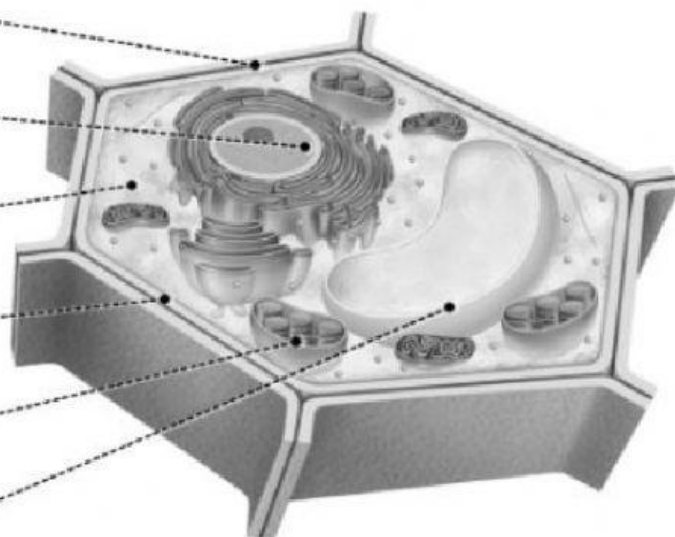
- Ⓐ Taking in food to obtain energy is called *nutrition* / *growth*.
- Ⓑ *Plants* / *Decomposers* can make their own food.
- Ⓒ *Respiration* / *Reproduction* means making new living things.
- Ⓓ Only one organism is required in *sexual* / *asexual* reproduction.
- Ⓔ Responding to changes in the environment is called *movement* / *interaction*.

## 2. Which life process do these actions show? (4 points)

action	function
a. A plant grows in the direction of sunlight.	_____
b. A fungus feeds on a dead tree trunk.	_____
c. A male and a female zebra produce a baby zebra.	_____
d. A bacterium divides into two.	_____

## 3. Label the plant cell. (6 points)

- 1. c \_\_\_\_\_
- 2. n \_\_\_\_\_
- 3. c \_\_\_\_\_
- 4. c \_\_\_\_\_
- 5. c \_\_\_\_\_
- 6. v \_\_\_\_\_



4. List the features that are common to plant cells and animal cells. (4 points)

--	--	--	--

5. Complete the text with words from Activity 3. (6 points)

The (1) \_\_\_\_\_ controls all the functions of the cell. The cell is protected by a 'skin' which is called the (2) \_\_\_\_\_. Plant cells also have a hard \_\_\_\_\_ which gives the cell its shape. The cell is filled with a jelly-like substance called (4) \_\_\_\_\_. Plant cells and most animal cells have (5) \_\_\_\_\_ which contain water and minerals but only plant cells have (6) \_\_\_\_\_. They use these for photosynthesis.

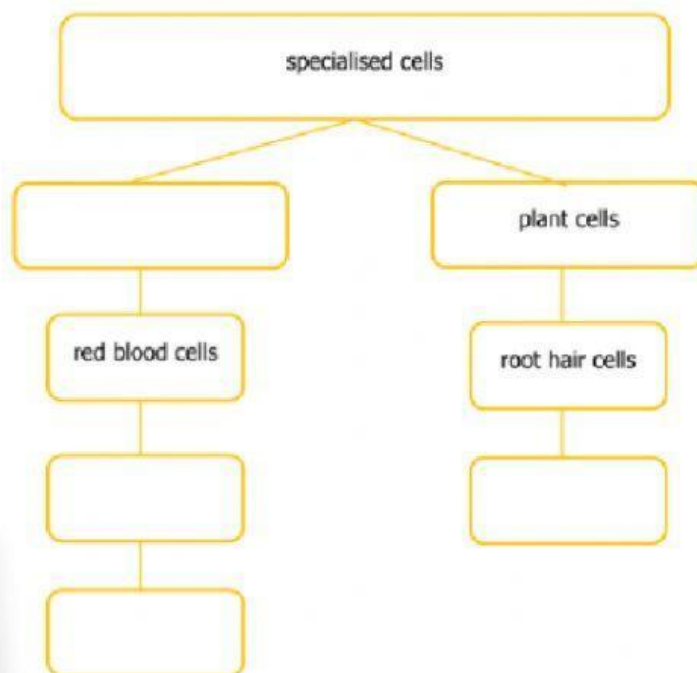
6. Choose the correct kingdom for each organism. (5 points)

yeast	tree	bacteria	algae	starfish
-------	------	----------	-------	----------

7. Which kingdoms are ... (5 points)

- a multicellular? \_\_\_\_\_
- b unicellular? \_\_\_\_\_
- c both? \_\_\_\_\_

8. Complete the following diagram. (4 points)



9. Read and decide if these sentences are **TRUE** or **FALSE**. (5 points)

a) All organisms in the Monera kingdom are unicellular

\_\_\_\_\_

e) All fungi are unicellular.

\_\_\_\_\_

f) Animals get energy by feeding on other living things.

\_\_\_\_\_

g) The amoeba makes its own food through photosynthesis.

\_\_\_\_\_

h) Most protists live on land.

\_\_\_\_\_

10. Complete the following chart using the words in the box. (6 points)

Leaf cells	White blood cells	PLANT CELLS
Red blood Cells	Root hair cells	Nerve cells

ANIMAL CELLS	
Name of the cell	Functions of the cell
	They carry oxygen around the body.
	The carry information from the brain to the rest of the body and vice versa.
	They protect the body from bacteria, viruses and other invaders.

Name of the cell	Functions of the cell
	The absorb light so photosynthesis can take place.
	They absorb water and minerals from the soil.