



Senior Secondary Biology

Topic: Plant Reproduction- OVULE

Dr. Abhijit Saha, Training Associate (Biology)
ZIET Bhubaneswar, India

Drag and Drop Exercise

Dear Students

Study the 2 diagrams carefully and fill in the blanks by dragging their appropriate terms from the lists into the proper block. Enjoy the game and evaluate your understanding. Happy joyful learning.

ORTHOTROPOUS

AMPHITROPOUS

HEMI-ANATROPOUS

ANATROPOUS

CAMPYLOTROPOUS

1

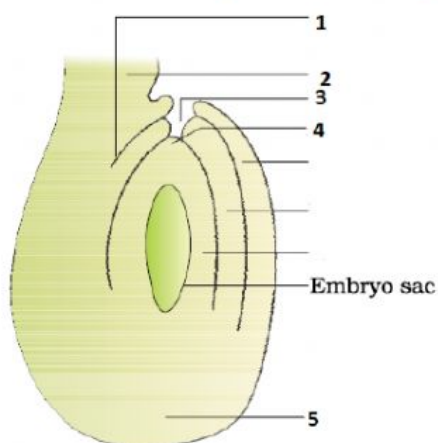
5

2

4

3

Label the five parts in the diagram of Ovule given below:



MICROPYLE

CHALAZA POLE

HILUM

MICROPYLE POLE

FUNICLE

1	
2	
3	
4	
5	