

# The Selfish Giant

Click on the correct answer, A or B?:



Where does the Giant live?

**A – He lives in a castle.**

**B – He lives in a house.**



Who does the Giant visit?

**A – He visits his family.**

**B – He visits his friend.**



Why do the children want to enter?

**A – The castle is beautiful.**

**B – The garden is beautiful.**



How does the Giant feel?

**A – He feels happy.**

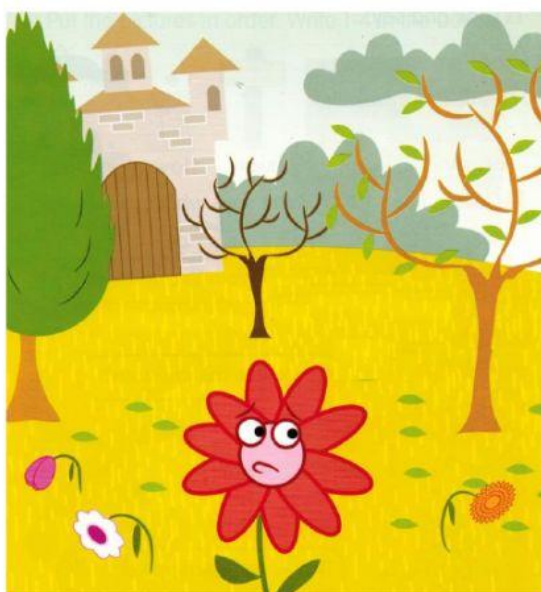
**B – He feels angry.**



What does the Giant build?

**A – He builds a house.**

**B – He builds a wall.**

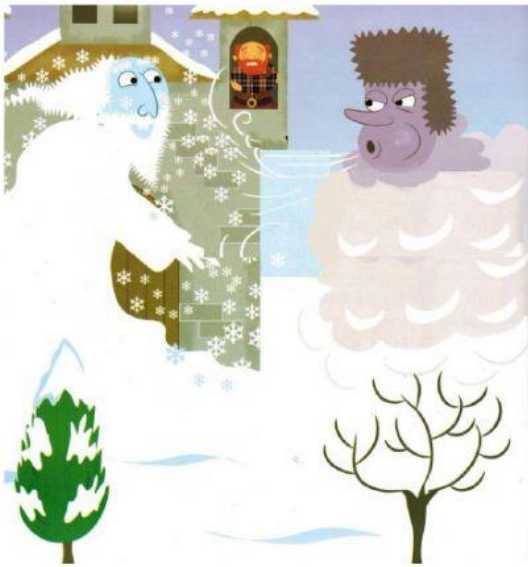


How does the flower feel?

**A – It feels happy.**

**B – It feels sad.**





What happens to the Giant's garden?

**A – It is very hot.**

**B – It is very cold.**



What happens when the Giant shares his garden?

**A – Spring returns.**

**B – Winter stays.**



Why does the spring return to the garden?

**A – Because the Giant shares his garden.**

**B – Because children escape.**



How does the Giant feel?

**A – He feels very happy.**

**B – He feels very angry.**