

Complete the dialogue. Choose the correct option.

A: Look at Salif over there, I'm _____ worried about him.

B: Why?

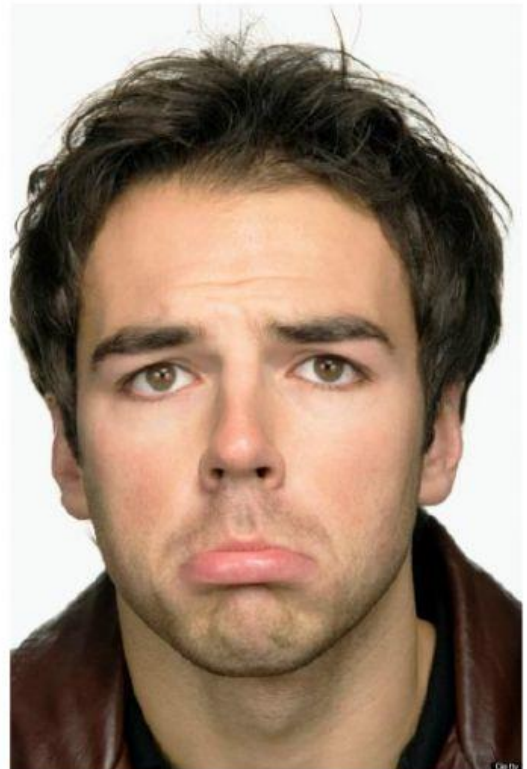
A: He never smiles these days – he's _____ sad.

B: I'm not friendly with him but he does look _____ sad.

A: You know, something isn't right. Usually he's
_____ talkative and funny.

B: Have you got any idea what it is?

A: His mum is _____ well.



Put the sentences in order of
strength of modifier: 1 = weak,
5 = strong.

I'm quite worried about Salif. _____

I'm really very worried about Salif. _____

I'm really quite worried about Salif. _____

I'm not very worried about Salif. 1

I'm very worried about Salif. _____