

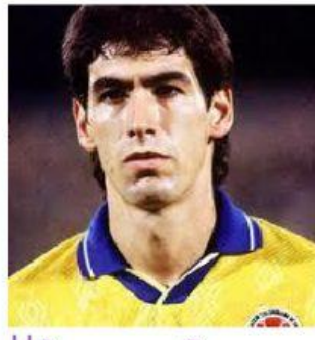
(TO BE)	Present Simple	Past simple
I He She it	Am Is Is is	was
You We they	are	were



She \_\_\_\_ a singer



She \_\_\_\_ a singer



He \_\_\_\_ a  
footballer.



he \_\_\_\_ a  
footballer



He \_\_\_\_ an actor



He \_\_\_\_ an actor



They \_\_\_\_ singers



They \_\_\_\_ singers



Yesterday \_\_\_\_ Monday



Today \_\_\_\_ Tuesday

## Negative sentences



Yesterday **was/ wasn't** sunny



Mr. Bean **was/ wasn't** in the supermarket



My parents **were/ weren't** in the gym



My mom **was/wasn't** in the garden



The children **were/ weren't** in the school.