

Name:

Course:

General Learning Test

Science

A- Types of Energy

1. Match each term with the correct definition.

Thermal energy ____

Light energy ____

Chemical energy ____

Electrical energy ____

Kinetic energy ____

Sound energy ____

- a) Energy stored in food and living things.
- b) Energy that produces heat.
- c) Energy that produces light.
- d) Energy that an object possesses because of its motion. (movement)
- e) Energy that produces sound.
- f) Energy that comes from the flow of electric charge.

2. Choose the appropriate 'type of energy' in each picture.

Flashlight



TV



CD

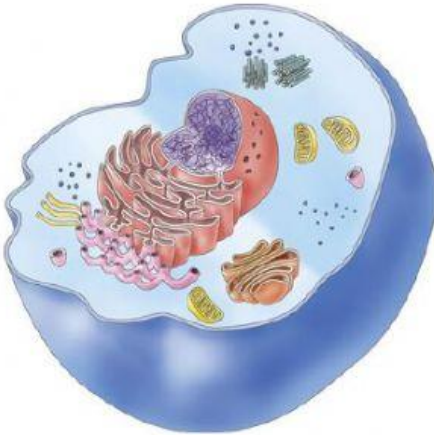


Ride a bike



B- The Cell

1. Write the name of each type of cell and complete the sentences.





All animal and plant cells contain three basic parts: _____,
_____ and organelles. In plant cells there is also a _____
outside the membrane.

2. True or False?

- a) Cells are always spherical. _____
- b) Both animal and plant cells contain chloroplasts. _____
- c) Cells are living things. _____

- d) The nucleus protects the cell. _____
- e) The cytoplasm is a jelly substance protected by the membrane. _____
- f) The organelles carry out several life processes. _____

Literature.

AROUND THE WORLD IN 80 DAYS



1. Put the countries in order according to the stops Mr Fogg did on his trip.

JAPAN	ENGLAND	EGYPT	IRELAND	FRANCE	USA	INDIA	HONG KONG	ITALY	CHINA
-------	---------	-------	---------	--------	-----	-------	-----------	-------	-------

ENGLAND >> _____ >> _____ >> _____ >> _____ >> _____

_____ << _____ << _____ << _____ << _____

2- Are these sentences true or false? Choose.

- a) Phileas Fogg wasn't married before the journey. _____
- b) He left London on 21st December. _____
- c) Passepartout was happy to go round the world. _____
- d) Fogg slowly fell in love with the princess. _____
- e) Passepartout and Fix had a drink in Calcutta. _____
- f) Passepartout went to Japan on the Carnatic. _____
- g) Phileas Fogg was the gentleman thief. _____

LANGUAGE

1. Match the problem with the best advice and choose SHOULD / SHOULDN'T

- a. My car keeps breaking down____
- b. I'm extremely stressed at
work____
- c. I have a lot of problems with my
teeth____
- d. I sometimes get quite lonely____
- e. I feel tired all the time____

- 1. You _____ stay up late
- 2. You _____ buy a better one.
- 3. You _____ speak to your boss.
- 4. You _____ make some new
friends.
- 5. You _____ eat sweets every
day.

2. Complete the postcard with the verbs in the past form.



Hi Mum and Dad!

We ¹ _____ (get) here safely yesterday. The journey
² _____ (be) fine. Daniel's dad ³ _____ (meet)
us at the airport and ⁴ _____ (drive) us to their house.
In the evening we ⁵ _____ (go) to a movie. On the
way we ⁶ _____ (stop) at a café and ⁷ _____
(have) some pizza. We ⁸ _____ (come) home after
midnight - I'm so tired today!
Love from Rafael

3. Complete with the correct verb in the correct form. Past simple or continuous

- When we _____ Carlos, he _____ his car
(See/clean)
- Maria _____ for the train when she _____ (run/
fall)
- Anna _____ Julia while she _____ to class
(meet/ walk)
- Hugo _____ his leg, when he _____ tennis (hurt/
play)
- My phone _____ while I _____. (Ring/
drive)

4. Comparatives and superlatives: Choose the correct option:

- a. The weather here is hotter _____ it is in Germany. a. MOST b. THAN
c. AS
- b. My sister isn't _____ tall as me. a. MORE b. THAN c. AS
- c. The sofa is _____ comfortable than the other one. a. MOST b. THAN
c. MORE
- d. Yusuf is the _____ boy in our class. a. FUNNIEST b. MORE FUNNY
c. FUNNIER

5. FIRST CONDITIONAL: correct the mistake

1. If Mirac agrees, we go on the train.

2. If you won't take the medicine, you won't feel any better.

3. We arent having a picnic if the weather isn't good.
