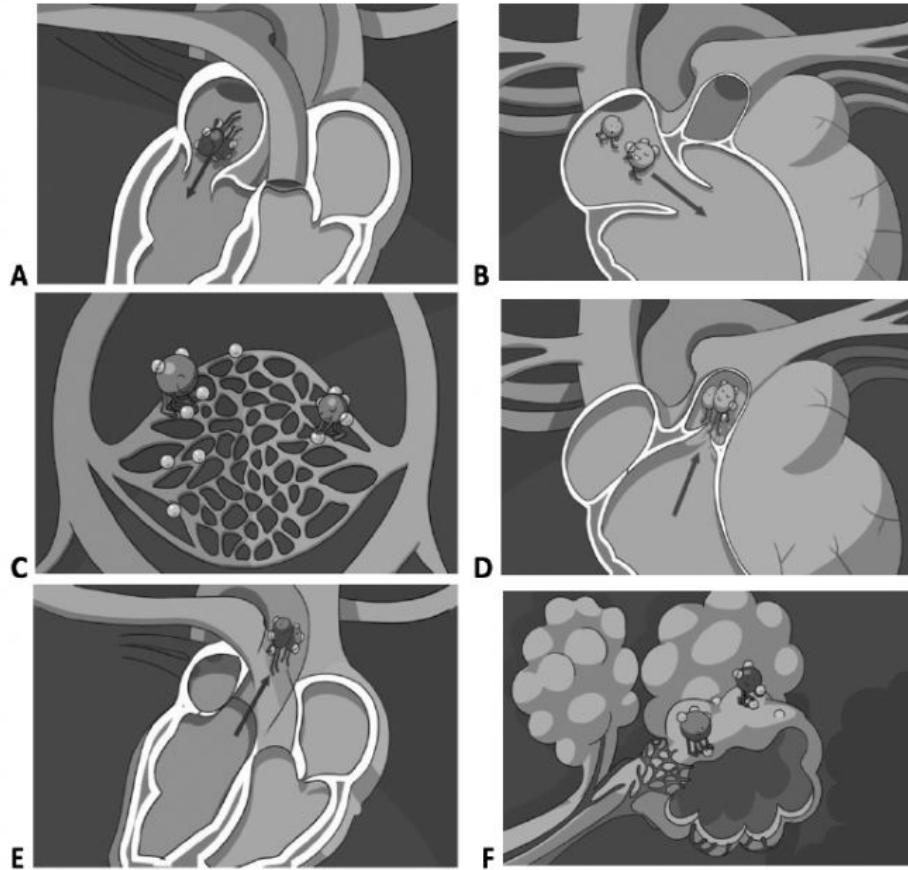


Unit 2 – Body systems

How the circulatory system works

1 Match the sentences from the comic to the pictures.



- ☐ We're on our way into the heart.
- ☐ We're going whooshing off to a lung now.
- ☐ Now we're in a capillary in a lung.
- ☐ Here we are back in the heart again.
- ☐ Here we go out of the heart!
- ☐ Now we're in a finger. Drop off your oxygen and pick up some carbon dioxide.

2 Choose 'good for the heart' or 'bad for the heart'.

a) Sitting and watching TV all day.

b) Eating healthy.

c) Exercise.

d) Too much fat in your diet.

e) Running and playing outside.

f) Gaining too much weight.