



Grade First Quarterly Evaluation Science

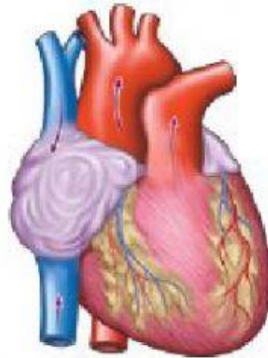
Name: _____ Date: _____

Choose A, B, C or D.

Which level of biological organization includes all the others?

- A. Tissue.
- B. Cell.
- C. Organ.
- D. System.

Look at the image. Which level of organization does it belong to?



- A. Tissue.
- B. Cell.
- C. Organ.
- D. Organism.

Look at the images. From the least to the most complex, what is the order of the levels of biological organization?



- A. III - I - V - II - IV
- B. IV - II - V - I - III
- C. I - III - V - II - IV
- D. IV - II - V - III - I

In what order does food pass through these digestive organs?

- | | | |
|-----------|---------------|---------------------|
| 1. Anus. | 3. Esophagus. | 5. Small intestine. |
| 2. Mouth. | 4. Stomach. | |
- A. 2 - 4 - 3 - 5 - 1
 - B. 2 - 3 - 4 - 5 - 1
 - C. 1 - 5 - 3 - 4 - 2
 - D. 1 - 5 - 4 - 3 - 2

Which of these structures collaborate to form the food bolus?

- I. Tongue.
 - II. Teeth.
 - III. Esophagus.
 - IV. Salivary glands.
- A. Only IV.
 - B. I and IV.
 - C. I, II and IV.
 - D. I, II, III and IV.

What movements push food down the esophagus to the stomach?

- A.** Lateral movements.
- B.** Circular movements.
- C.** Peristaltic movements.
- D.** Contractions and relaxations.

Which of the following form part of the circulatory system?

- I. Heart.
 - II. Blood.
 - III. Small intestine.
 - IV. Lungs.
- A.** Only I.
 - B.** I and II.
 - C.** I, II and III.
 - D.** I, II and IV.

Blood is a liquid tissue that circulates around the body in blood vessels. What does blood consist of?

- A.** Red blood cells.
- B.** Water and plasma.
- C.** Red blood cells and plasma.
- D.** Formed elements and plasma.

Which type of formed element does blood have the most of?

- A. Platelets.
- B. Leukocytes.
- C. Red blood cells.
- D. White blood cells.

What is the function of coagulation?

- A. It keeps the body from losing water.
- B. It allows blood to be lost from the heart.
- C. It allows pathogenic elements to leave the body.
- D. It avoids excessive blood loss after an injury.