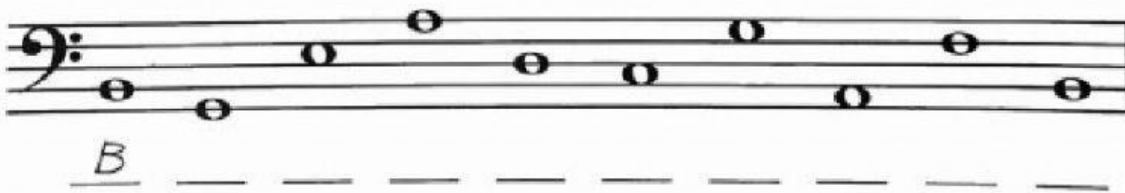
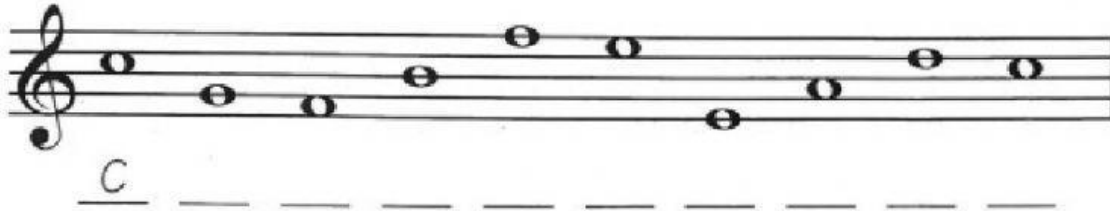


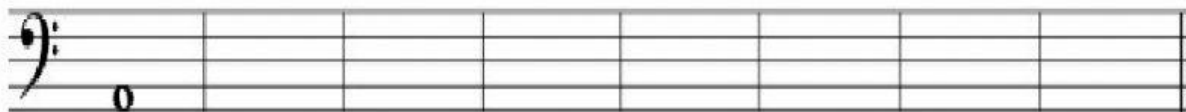
Treble Clef, Bass Clef & Grand Staff Worksheet 1



1. Write the letter names of the following notes. Use CAPITAL LETTERS. [1 pt each]



2. DRAG and DROP the semibreve notes from the box on the staff to each of the indicated notes. The first answer is given. [7 pts]



A in a space

D on a line ☐

B on a line ☐

G in a space ☐

F on a line ☐

C in a space ☐

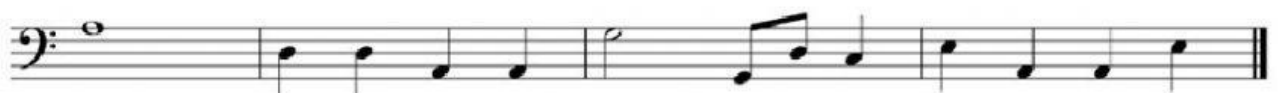
F in a space ☐

E in a space ☐

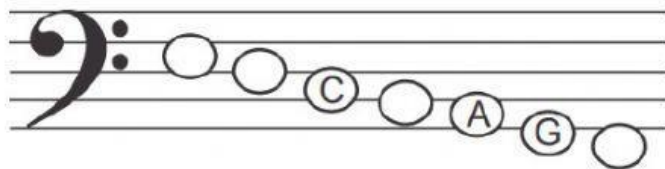
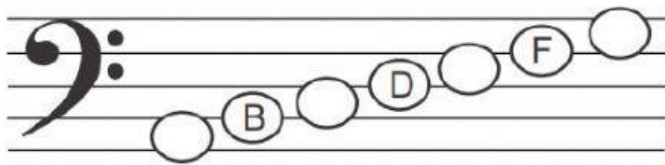
3. How many E notes are in this melody? _____ [1 pt.]



4. How many A notes are in this melody? _____ [1 pt.]



5. Fill in the missing letters. Use CAPITAL LETTERS. [1 pt. each]



6. Musical Spelling Words! - Name the letters of the treble clef. They spell words. [2pts each]

